



TURNTABLE

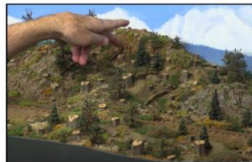
Volume 7, Number 10

October 2023

The NMRA's *Turntable* is a monthly publication that, like a railroad turntable, will lead you in several directions on the internet.

This e-publication is a collection of railroad and model railroad videos, podcasts, websites, and/or other information freely available on the internet that we think may be of interest to you. The NMRA claims no ownership of this information, nor do we endorse its creators or their websites. The *NMRA Turntable* will not promote individuals or their for-profit ventures.

Lost Creek Lumber Company in Sn3



Lost Creek Lumber Co.

Paul Claffey's Lost Creek Sn3 layout was built over the course of about thirteen years. The top deck has scenery around two-thirds of it, and it's amazing.

Join us for a tour of this layout, as it was scheduled to be dismantled within weeks after the video was made. Paul gives us a look at what operations on his layout are like over the finished portion of the layout, then gives us a brief look at the rest of the unfinished parts.

Paul's attention to detail and scratch-building skills are sure to impress even the pickiest modelers.

The San Diego Model Railroad Museum





The San Diego Model Railroad Museum

The La Mesa Model Railroad Club operates the Southern Pacific - Santa Fe Tehachapi Pass Layout. This exhibit is a highly accurate replica of Southern California's busiest single-track mountain railroad and is HO scale.

The Tehachapi Pass runs through the Tehachapi Range of the Sierra Nevada Mountains and is famous for the Tehachapi Loop where, because of the steep mountain grade, the railroad was designed in a spiral loop. You can see this replicated on the mezzanine level of the Tehachapi layout.

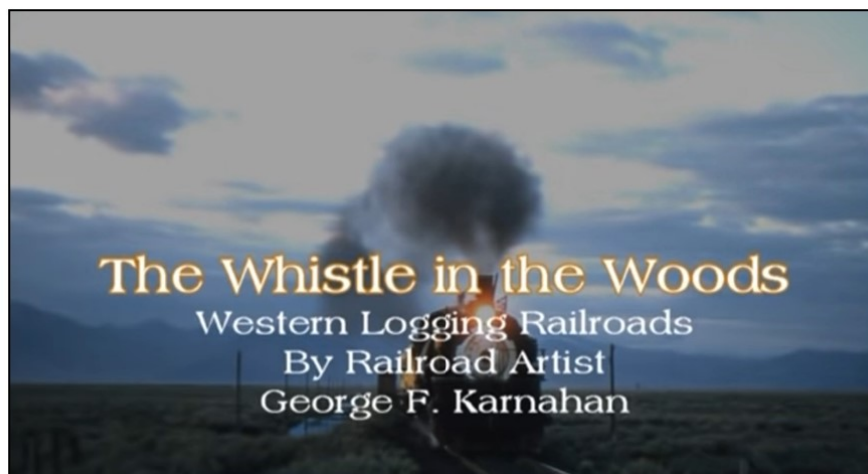
Everything on this layout operates to scale. Including the types of trains run on the track, the times of operation, and the speed.

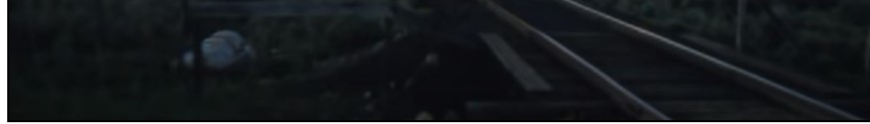
One - Turnout Layout



One -Turnout Layout

In this video, the presenter talks about how the concept of a One-Turnout Layout can help when designing a small switching layout. You don't need to have many customers, industries, or spurs in order to have a lot of operations.





The Whistle in the Woods

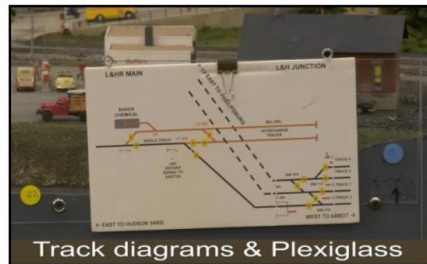
The Whistle in the Woods is a rare collection of railroad logging photos by artist George F. Karnahan. George took the photos from 1950-1971 as color slides. All the photos are copyrighted (c). The music is original from his son Patrick Michael Karnahan, and the Black Irish Band (c) (p) 2019

George F. Karnahan is no longer with us, but his artistic photos will last forever. The video was produced by his son Patrick. The purpose of releasing this video on YouTube was to let everyone know what a great American Artist George was. His feel for color, mood, and composition is amazing. Every shot is perfect.

ULTIMATE LAYOUT TIPS



Ample aisle space (single operator or multiple operators)



Track diagrams & Plexiglass

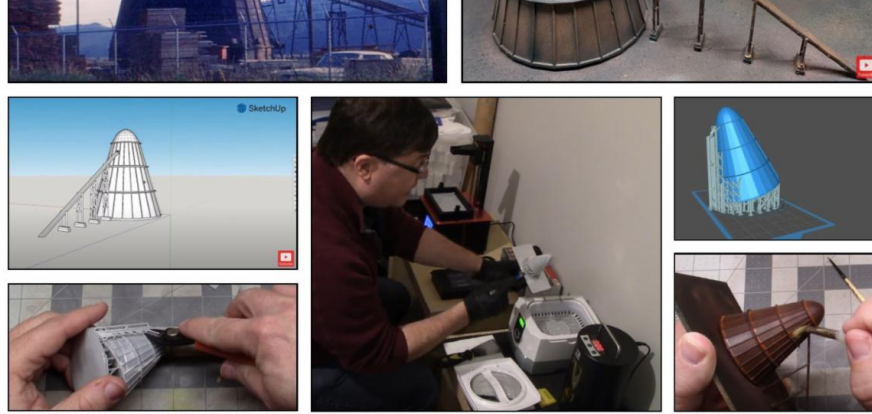
Ultimate Layout Tips

In this video, *DJ Trains* talks about several ultimate layout tips for a great model train room!

This is the 3rd video from the Lehigh & Keystone Valley Model Railroad Club in Bethlehem, Pennsylvania.

3D Printing for Model Trains A Game Changer?

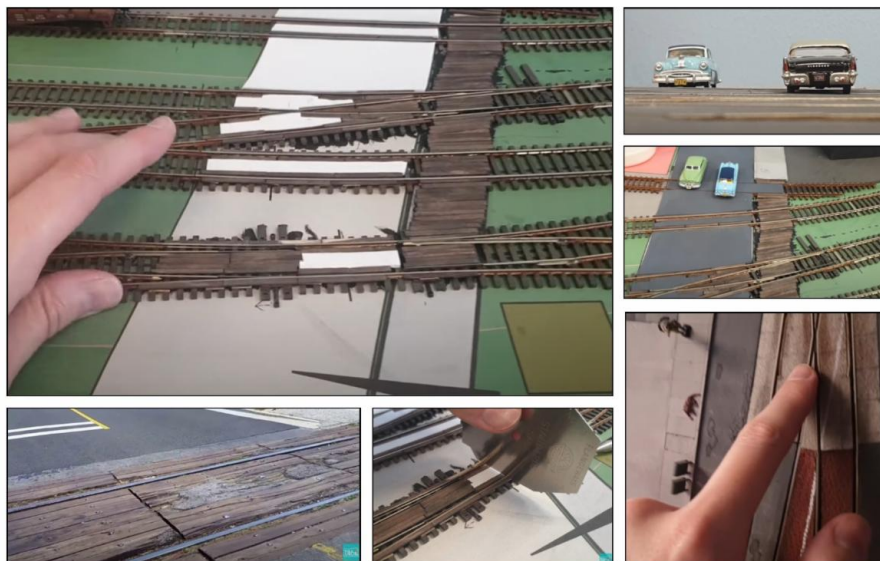




3D Printing for Model Trains

Many model railroaders have already discovered the potential of technology for our hobby, and it is a whole hobby in itself. This video explores the basics of 3D printing, and the potential it has, showing the process of designing, printing, and painting a model for a layout. 3D Printing costs have come down considerably, and for the price of a DCC-equipped locomotive, you could greatly enhance your own layout!

Modeling a Railroad Crossing With Embedded Turnouts

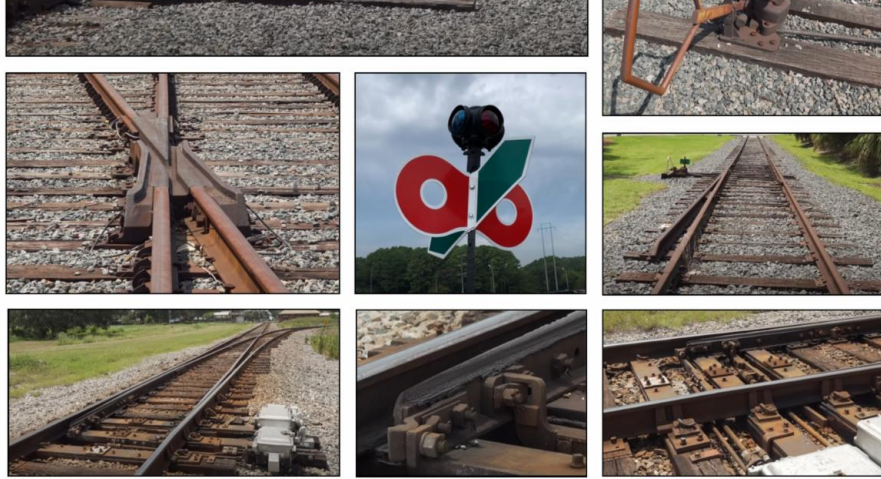


Modeling a Railroad Crossing

Using scale lumber and foam, Dubai Trains models this road that crosses 6 tracks and two turnouts. Follow how they built this model railroad depicting downtown Chicago in the 1950s.

How Railroad Switches Work





How Railroad Switches Work

This is from a question Danny Harman got about different types of railroad switches. He tried to find and include as many as he could, but there are still more types out there.

NMRA-x Clinics on YouTube

- 178 Lloyd Henchey Building the Historic Contoocook Covered Bridge
NMRA ORG • 568 views • 1 year ago
- 179 Dave Salamon Cement plant modeling
NMRA ORG • 1.1K views • 1 year ago
- 180 Joey Giunto Easy and Fun Operations for Your Model Railroad
NMRA ORG • 1.1K views • 1 year ago
- 181 Jordan Kramer Trackside with Jordan Travels Abroad
NMRA ORG • 164 views • 1 year ago
- 182 Kevin Marks Getting started in Track Building
NMRA ORG • 1.3K views • 1 year ago

NMRA-x Clinics on YouTube

The Florida East Coast Railway in New Smyrna Beach

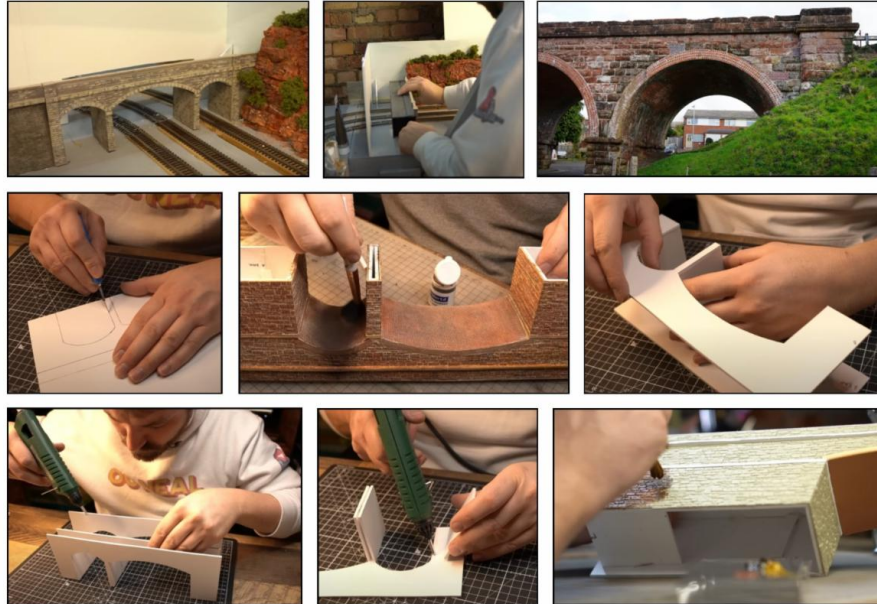




The FEC in New Smyrna Beach

This video explores the era of diesel railway engines and streamlined passenger service in New Smyrna Beach, Florida.

Building a Realistic Model Railway Bridge

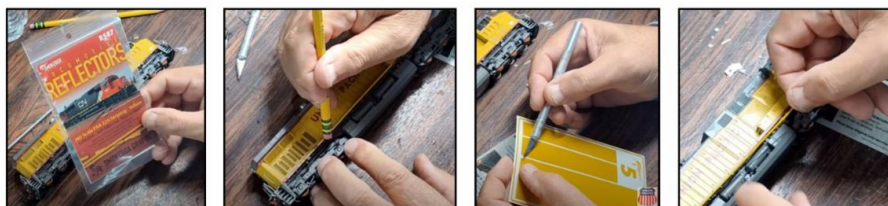


Realistic Model Railway Bridge

Building a Bridge from scratch is really a lot easier than you might have thought.

The bridge is 1/76 (OO) scale and is inspired by 2 bridges from GlosWarks Railway and Severn Valley Railway, Bewdley. Follow the video to see how it went together.

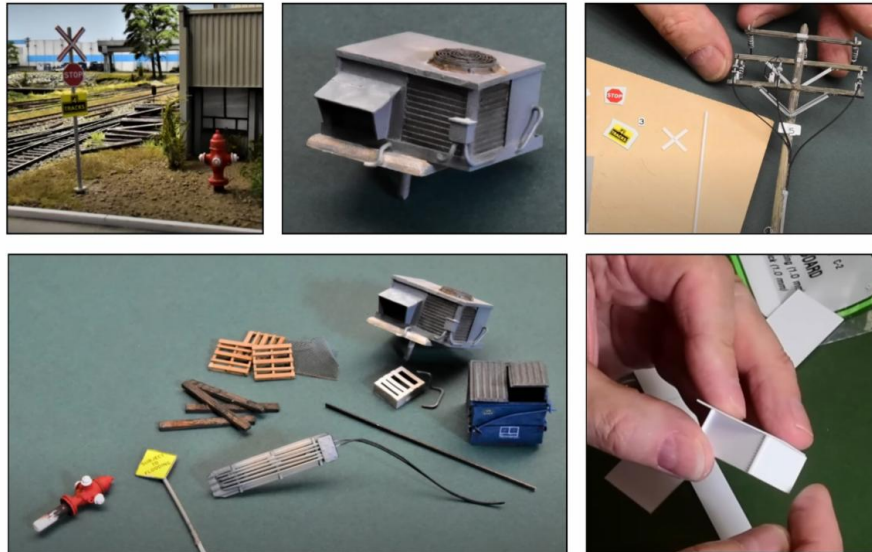
Applying Reflective Tape To A Loco



Applying Reflective Tape

This video features a review of the Smokebox Graphics reflective tape for locomotive sills and freight car sides.

Scratching Random Details



Scratching Random Details

Model Railroads & Dioramas are excellent mediums to tell our stories. Often times it is the small seemingly insignificant details that write the narrative. Creating a story within your model railroad world cultivates passion and imagination. It keeps the interest high. Let the story reflect your own experiences and emotions around the railroad you model. In this episode *Boomer Diorama* shares just a few details that will be fleshed out more as the River Road story continues.

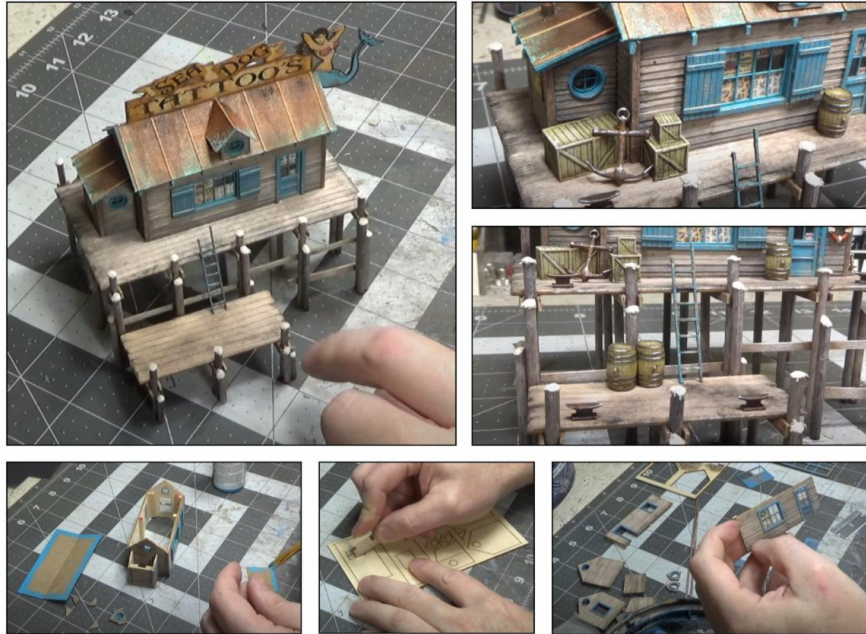
Review: Rapido's HO Scale GE U25B w/Lighted Gauges, DCC, & ESU Loksound



Rapido's GE U25B Reviewed

In this video, James dives deep into the Rapido HO Scale GE U25B locomotive, equipped with mesmerizing lighted gauges, advanced DCC (Digital Command Control), and the immersive ESU Loksound technology.

Building a New Waterfront Kit!



Building a New Waterfront Kit!

In this video, Jason Jensen builds a new and exciting waterfront kit! Like always a lot of tips and techniques are covered.

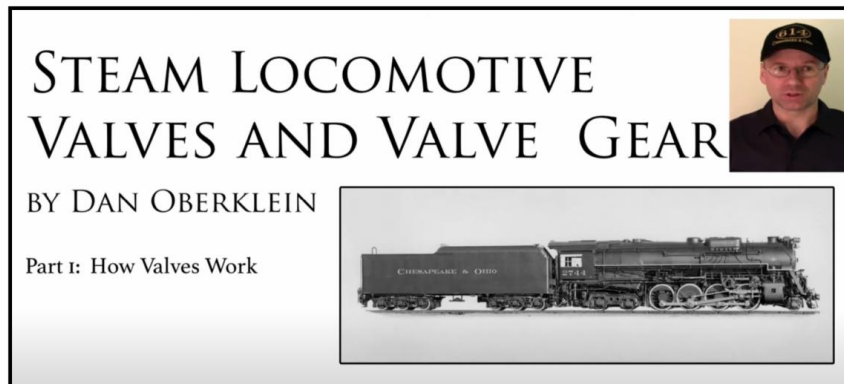
Wiring Your Model Railroad For DCC



Wiring Your Railroad For DCC

Wiring a model railroad for DCC needn't be the confusing job many make it out to be. There are a few basic rules to follow and as long as you know and follow them it can be a fairly quick and easy part of your model railroading adventure. Today Larry Puckett wants to share with you what he considers to be the most important of these rules and also discuss why you need to do it that way.

C&O Railway Historical Society



[Steam Loco Valves & Valve Gear](#)

In this video from the Chesapeake and Ohio Railway Historical Society, Dan Oberklein explains how valves on a steam locomotive work, valve design and function, and steam passages and ports.

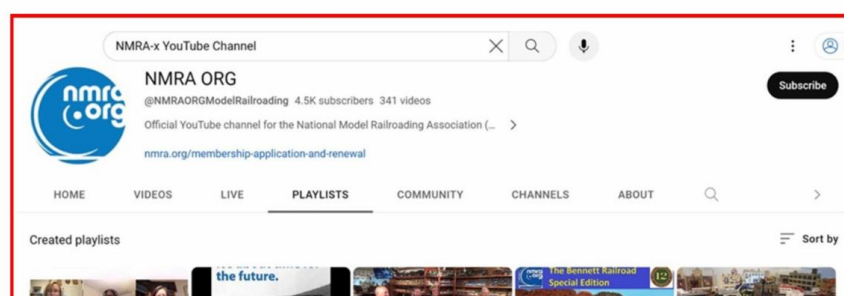
C&O Railway Historical Society

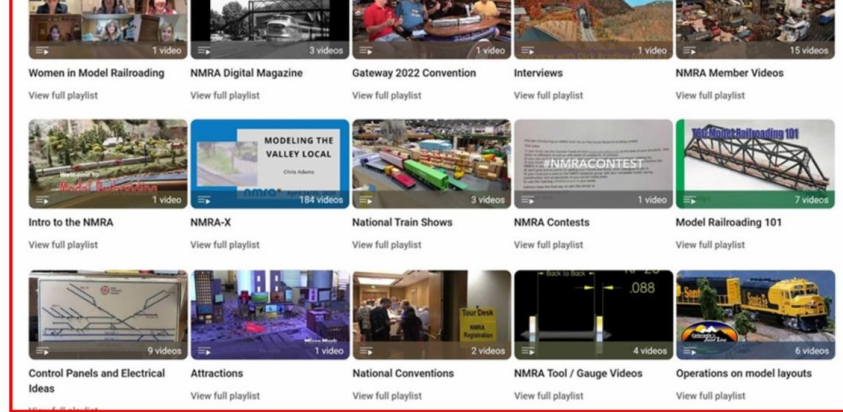


[Walschaerts Valve Gear](#)

In this second video, Dan Oberklein shows and describes all the parts of the Walschaerts valve gear and describes why each is necessary and why it is shaped and sized the way it is.

NMRA-x YouTube Channel





[NMRA-x YouTube Channel](#)

NMRA's Partnership Program

PARTNERSHIP PROGRAM

NMRA members can log in and click on the **Benefits** tab to view the **NMRA Partnership Program**. Please patronize all of our partners for some fantastic discounts as an NMRA member!

<p>Bespoke Rail* CatzPaw Innovations CB Train Junction* Clever Models, LLC Coastmans Scenic Products Composite Designs, Inc. CMR Products, LLC Conowingo Models Daylight Sales (Merchandise) Deepwoods Software Deluxe Materials Dwarvin Enterprises, Ltd East Coast Circuits Enterprise and National Car Rental Services Evan Designs Feight Studios Fusion Scale Graphics Gatorfoam Great Decals! Green Frog Productions [New Partners in RED*]</p>	<p>Highways and Byways Model Railroad Graphics Hot Wire Foam Factory K.I.S.S Method, Inc. LaBelle Woodworking Co. LARC Products Logic Rail Technologies MAC Rail Micro-Mark Mine Mount Models miniprints MRC (Model Rectifier Corp) Model Train Catalogue Modelers Decals & Paint Motrak Models Mudd Creek Models* New Creations Victorian Railroad Buildings Nick and Nora Designs Northlandz NScale Works by Mike Holly Old Depot Gallery* Old West Scenery</p>	<p>Ram Track RR-CirKits Scale Model Plans Scale Railroad Models* Scenery Solutions Showcase Miniatures Team Track Models The N Scale Architect The Old Depot Gallery Tichy Train Group Touch of the Brush Model Weathering Train Installations, LLC Train Show, Inc. Trainmasters TV/Model Railroad Hobbyist Store TRAINZ.com TSG Multimedia UGEARS USA Airbrush Supply/ Badger Airbrush WiFi Model Railroad, LLC</p> <p style="text-align: right; font-size: small;">October 2023</p>
---	---	--

[Partnership Program](#)

The NMRA Partnership Program is a member benefit that truly has a tangible payback. We've partnered with model railroad manufacturers of all sizes, giving them exposure on our website in return for receiving generous discounts for NMRA members all year long. Some provide members with special codes, others prefer a phone or email order, but all appreciate the additional business from our members. And of course, our members appreciate the extra savings...savings that can actually pay the cost of NMRA membership! **Be sure to check back often as new Partners are being added all the time.**

*Five new Partners have joined the **Partnership Program** this month - **Bespoke Rails**, **CB Train Junction**, **Mudd Creek Models**, **The Old Depot Gallery**, and **Scale Railroad Models**. Click on an image below to visit their websites.*

<https://www.bespokerails.com/>





Handcrafted Railroad Creations



CB Train Junction

"The best little train shop"

Now Open!

cbtrainjunction.com/

NMRA Members will receive a 15% DISCOUNT!



Welcome to Mudd
Creek Models

N-HO Scale
Kits of
Distinction!

Mudd Creek Models

[HOME](#) [SHOP](#)

<https://muddcreekmodels.com>

The Old Depot Gallery

The Finest in Railroad Art by Robert Frascella

<https://www.olddepotgallery.com>





NMRA Members get a 10% discount with code



Prototypical and Historic Building kits in HO and N Scale

We produce building kits of actual structures that exist (or have existed) in the United States.

NMRA@HOME



A Tale of Two Gondolas

Featured in the Division Business Car Column appearing in the October 2023 issue of NMRA Magazine.

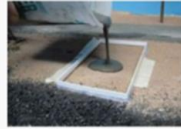
Martin Brechbiel, MMR® walks you through how he scratch built two gondolas based on a prototype in the *Potomac Flyer*, the newsletter of the Mid Eastern Region's Potomac Division. Martin's article is a great reference for scratchbuilding any wood gondola.

DCC for Zebras

Featured in the Division Business Car Column appearing in the October 2023 issue of NMRA Magazine.



Santa Fe zebras, that is! Kelly Russell, a member of the 100% NMRA San Jacinto Model Railroad Club in Houston Texas, shares how he installed DCC in his Santa Fe zebra-striped switchers in the club's newsletter, *The Deraill*.



Cement!

Featured in the Division Business Car Column appearing in the October 2023 issue of NMRA Magazine.

Modelers often say that nothing looks like wood other than wood. But what about cement? Wayne Pierce of the Pacific Southwest Region's San Diego Division shows you how to make concrete floors, slabs, walls, footings, and more using the real thing in the *Mail Hook*, the division newsletter.

Tours from the NMRA National Convention in Grapevine, Texas

Featured in the Division Business Car Column appearing in the October 2023 issue of NMRA Magazine.

A virtual tour of the National Convention in Grapevine, Texas. Keep checking back to see updates as Jim's team of roving reporters report back with photos and commentary. Updated as of Sep 26, 2023.



The ***Division Business Car*** column appears in even-numbered months in NMRA Magazine. It's loaded with great modeling ideas, plus useful information that can help make your Division, Region, or 100% NMRA Club even better. The information comes from articles published in Region, Division, and Club newsletters. The best of these articles are posted on the NMRA website. You can read the entire archive, from as far back as 2011 right up to the latest posting, by clicking [here](#).

Previous issues of the ***NMRA Turntable*** are available on the Turntable Archives page. You must first log in as a member at: nmra.org After you are in the members-only section, then you must hover over 'Publications' on the menu bar, then 'NMRA Turntable', and then click on one of the list of back issues.

Editor: [Paul Voelker, HLM](#)

Executive Editor: [Rick Coble](#)

The NMRA Turntable is an official monthly production of the National Model Railroad Association, Inc. Publishing Department (Riley Triggs Manager). Its purpose is to introduce NMRA members to a selection of instructional videos and online publications that they may find of interest. If you know of an NMRA member who is not receiving this mailing, please direct them to [here](#) to update their email address. If you no longer wish to receive these mailings, please don't mark them as SPAM. Instead, click the Safe Unsubscribe link at the bottom of this page. ©2021 National Model Railroad Association, Inc., P.O. Box 1328, Soddy Daisy TN 37384.

