



TURNTABLE

Volume 3, Number 10

October 2019

The NMRA's *Turntable* is a monthly publication which, like a railroad turntable, will lead you in a number of directions on the internet.

This e-publication is a collection of railroad and model railroad videos, podcasts, websites, and/or other information freely available on the internet that we think may be of interest to you. The NMRA claims no ownership of this information, nor do we endorse its creators or their websites. The *NMRA Turntable* will not promote individuals or their for-profit ventures.

A Members-Only Exclusive Clinic from Model Railroader Video Plus



Expert Scratchbuilding Tips, Part 1
With Renee Grosser

RRCC
MRVP

[Expert Scratchbuilding Tips, Part 1](#)

Award-winning modeler Renee Grosser launches an MRVP exclusive mini-series highlighting her top-notch modeling skills and tips. Follow along as she shares her process for using styrene to scratchbuild a farmhouse from little more than a few snapshots! Enjoy this first FREE look at an insightful mini-series exclusively on MRVideoPlus.com



2019 National Narrow Gauge Convention

2019 National Narrow Gauge Convention

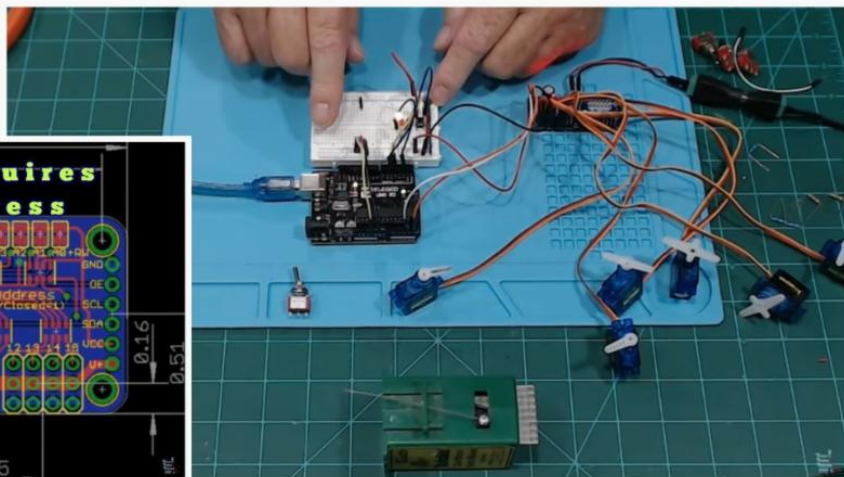
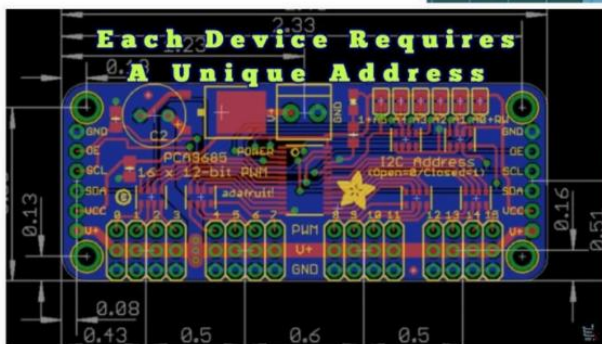
The 39th Annual Narrow Gauge Convention was recently held in Sacramento, California. This video shows the events and layouts that were at the convention.



Weathering Track

[Weathering Track](#)

Joey shows us how he paints and weathers track using inexpensive and budget supplies.



Turnout Control with Arduinos & Servos

[Turntout Control w/Arduinos & Servos](#)

This video shows how to use a PCA9685 Arduino & servos to control up to 16 turnouts using only two wires.



New Haven Railroad Update 40 “Super Elevated Curves & Harbor Info”

[New Haven Railroad Update 40](#)

The video covers super elevation for curves on this model railroad & info on how the boats and facilities in the harbor will be laid out on this New Haven themed model railroad.

Podcast Interviews



Age of Steam Roundhouse with Executive Director Noel Poirier

[Age of Steam Roundhouse](#)

"The Roundhouse" host Nick Ozorak talks with Age of Steam Roundhouse Executive Director Noel Poirer on the future of the locomotive collection.



Kathy Millatt & The Great Model Railway Challenge

[The Great Model Railway Challenge](#)

The Great Model Railway Challenge is a British TV series which pits several groups of model railroaders in a challenge to create the best model railroad. NMRA member Kathy Millatt, MMR®, serves as one of the judges in this friendly competition. "The Roundhouse" host Nick Ozorak talks to Kathy about *The Challenge* and the future of the hobby.

Best of the Rest



Severn Valley Railway Autumn Gala 2019 - Station Action



[Severn Valley Railway Autumn Gala](#)

Hils-TheTrainLady shot this video on the Severn Valley Railway which is located just west of Birmingham, England, where the 2022 NMRA National Convention will be held. This will be only the second time that an NMRA convention will have been held in the United Kingdom, the first was held in London way back in 1971. Having been to the Severn Valley Railway myself while attending the 2016 British Region Convention in Meriden (just east of Birmingham), I can say that this is one of the best Heritage Railways in the United Kingdom and it is less than twenty miles Birmingham!



Basic Scenery Techniques

[Basic Scenery Techniques](#)

Another episode in the Murphy's "Welcome to My Railroad" series showing how to work with basic scenery techniques to make your layout look great!



D&RGW Durlin Branch in On3 with Dave Adams

[D&RGW Durlin Branch in On3](#)

This video shows the Dave Adam's Durlin Branch of the Denver & Rio Grande Western in On3 scale.



Terrain Using Dead Tree Roots

[Terrain Using Dead Tree Roots](#)

Model railroaders are not the only hobbyists who work with terrain, wargamers do also and we can learn from their techniques for creating terrain for scenery.



N Scale Free-mo at Salt Lake City 2019

[N Scale Free-mo Layout at SLC 2019](#)

In this video we see the very large N scale Free-mo layout that was set up at the recent NMRA Train Show in Salt Lake City as a part of this year's NMRA National Convention.



Flock Like a Pro - Insider Tips & Tricks

Flock Like a Pro - Insider Tips & Tricks

"The Terrain Tutor" shows his tips and tricks for creating grass using flocking.

Division Business Car

NMRA@Home

The Tours and National Train Show at the NMRA National Convention in Salt Lake City

Featured in the Division Business Car Column appearing in the October, 2019 issue of the NMRA Magazine

A virtual tour of a few layouts, prototypes, and the National Train Show visited during the NMRA National Convention in Salt Lake City.



Steve Austin's Elkhorn Iron & Timber Company RR

Featured in the Division Business Car Column appearing in the August, 2019 issue of the NMRA Magazine

Our virtual visit to a On30 railroad that stretches from the mountains, to the ocean with lots of heavy industries included

Division Business Car

The ***Division Business Car*** column appears in even-numbered months in NMRA Magazine. It's loaded with great modeling ideas, plus useful information that can help make your Division, Region or 100% NMRA Club even better. The information comes from articles published in Region, Division, and club newsletters. The best of these articles are posted on the NMRA website. You can read the entire archive, from as far back as 2011 right up to the latest posting, by clicking [here](#).

NMRA Partnership Program

NMRA Partnership Program

The NMRA Partnership Program is a member benefit that truly has a tangible payback. We've partnered with model railroad manufacturers of all sizes, giving them exposure on our website in return for receiving generous discounts for NMRA members all year long. Some provide members with special codes, others prefer a phone or email order, but all appreciate the additional business from our members. And of course, our members appreciate the extra savings...savings that can actually pay the cost of NMRA membership!

Don't forget to visit the [Partnership Program](#) page on our website to get great deals and discounts!

Previous issues of the **NMRA Turntable** are available on the Turntable Archives page. You must first log in as a member at: nmra.org After you are in the members-only section, then hover over Publications on the menu bar, then *NMRA Turntable*, and then click on one of the list of back issues.

Editor: [Paul V. Voelker](#)

Executive Editor: [John Stevens](#)

The NMRA Turntable is an official monthly production of the National Model Railroad Association, Inc. Publishing Department ([Don Phillips](#), Manager). Its purpose is to introduce NMRA members to a selection of instructional videos and online publications that they may find of interest. If you know of an NMRA member who is not receiving this mailing, please direct them to [here](#) to update their email address. If you no longer wish to receive these mailings, please don't mark them as SPAM. Instead, click the Safe Unsubscribe link at the bottom of this page. ©2017 National Model Railroad Association, Inc., P.O. Box 1328, Soddy Daisy TN 37384.

STAY CONNECTED:

