

The Switch Tower

Seacoast Division, Northeastern Region, National Model Railroad Association

Larry Cannon, *President* • Richard Bretton, *Vice President* • Terrence P. King, *Secretary* • Tim Byrne, *Treasurer*

Volume Six

Fourth Quarter 1999

Number Four

President's Message

Conducting clinics or layout visits

by Larry Cannon

Two of the more enjoyable activities at regional and national conventions are the layout visits and the clinics. Both are usually done by model railroaders just like yourself, not manufacturers or commercial modelers. All that is necessary is your energy, and either a reasonably interesting layout or a topic with which you are familiar.

The best way to develop your own approach is to add the things you have appreciated in the layout tours and clinic presentations you have seen to what you view as a good effort on your part. Borrow ideas to garnish your thoughts. Remember, what you really enjoy is what you can communicate best and is likely to interest other model railroaders.

Layout tours and clinics tend to be better when they can be viewed as a process rather than a completed project. Granted, bare benchwork without track is part of the process, but it is not enough of the process for a layout tour. Benchwork could be made into an interesting clinic, however.

In the opposite view, a completed tree with the best construction explanation in the world, does not make as interesting a clinic as showing people how the tree was made from start to finish. There are aspects of showmanship and entertainment involved in either a layout tour or a clinic, and we need to judge our effectiveness beforehand somehow.

Besides subjecting yourself to the views of your own household, videotaping a clinic or layout is a good way to judge results. If you find the

(continued on page 3)

Division annual meeting New officers, clinics, coffee, and TRAINS

The annual meeting opened at 1:00 p.m. on October 23, 1999.

There were eight members and three guests present.

The minutes of the previous meeting were accepted with changes: Any reference to Richard Laskey should have been Richard Breton. (Apologies to both of them.) The clinic by Richard Breton was supposed to be Building Junk Yards, not Selective Compression, as reported. Finally, a clinic on Maintenance of Lionel Trains by Sandy Roberts.

Nominations (for director) were opened, and the names of Walter, Ronfeldt, Richard Breton and Ron Palmquist were read from the report on the nominating committee. Nominations were then (received) from the floor and Sanford (Sandy) Roberts was nominated. This gave us four names for three positions. An election was held, and the following were elected to the board of directors: Richard Breton, Ron Palmquist and Sandy Roberts.

Under Old Business, Ron Palmquist had sent a proposal (he was not present, as he

was working) for a layout registry page in *The Switch Tower* newsletter. Members could list a business card space or their model railroad. The idea was approved, but with the suggestion that they would be dispersed throughout the *Switch Tower* rather than (confined) to a full page.

Rail Clinic 2000 was discussed, and the Division will have a table at this (popular event.)

We approved another joint meeting with the Green Mountain Division at Hartmann's Model Railroad Museum in Intervale, N.H., in late April or early May.

The business meeting concluded at 1:33 p.m.

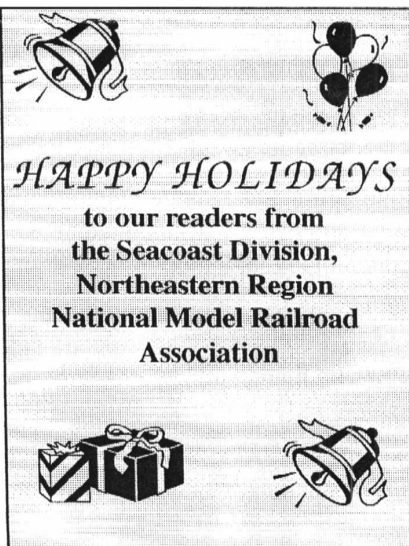
After the meeting, clinics were given:

- Refurbishing buildings that were not properly constructed - Terry King;
- Scenery - Larry Cannon;
- Maintenance of Lionel trains - Sandy Roberts; and,
- Building Junk Yards - Richard Breton.

The day ended at 3:30 p.m.

Respectfully submitted, Terrence P.

King, secretary.



Inside:

- Clinics highlight of Annual Meeting (p.3)
- Pike Ads
- Election results
- 2000 Calendar
- *The Switch Tower* publishing deadlines

The Switch Tower

Volume Six, Number Four, Fourth Quarter 1999

The Switch Tower is the official publication of the Seacoast Division, Northeastern Region, National Model Railroad Association, and is published four times a year. Your subscription is a benefit of membership in the Seacoast Division. Seacoast Division annual dues are \$5.00 per year. Checks or money orders should be made payable to Sea Coast Division, NMRA, and submitted to:
Terrence P. King, Secretary
Seacoast Division, NMRA
P.O. Box 188
E. Livermore, ME 04288-0188

Information regarding regular meetings of the Sea Coast Division, NMRA, is published in *The Switch Tower*. Submissions to the newsletter are most welcome, and should be sent to:

The Switch Tower

c/o Ron Palmquist, Editor
P.O. Box 229, Cape Cottage Branch
Cape Elizabeth, ME 04107-0229
207/799-1761

Sea Coast Division, Northeastern Region, NMRA

Larry Cannon, President and
Achievement Program Chairman
64 Skillings Corner Rd., Auburn, ME 04210
Phone: 207/786-3929

Richard Bretton, Vice President
Terry King, Secretary
Tim Byrne, Treasurer

Directors: Larry Cannon, Ray Houlihan,
Terry King, Ron Palmquist, Sandy Roberts,
Walter Ronfeldt, Allen Thurston
Photo Contests - Tim Byrne
Model Contests - Dwight Smith

Northeastern Region, NMRA

Glenn Glasstetter, Regional President
655 Hillview Road, Richmond, VT 05477
Phone: 802/434-3316

glenn.glasstetter@cwix.com

Stan Ames, Regional Trustee
8 Higate Rd., Chelmsford, MA 01824
Phone: 978/256-3062

stanames@geocities.com

Paul Allard, Regional
Achievement Program Chairman
53 Rollin Irish Road, Milton, VT 05468
Phone: 802/893-2228

Joseph T. Popecki, Editor *NER Coupler*
33 Woodridge Drive, Burlington, VT 05401-2741
Phone: 802/863-4121

Terrence P. King,
Northern New England Director
P.O. Box 188, E. Livermore, ME 04288-0188
Phone & FAX: 207/933-2477
tking@megalink.net

National Model Railroad Association, Inc.

Headquarters Office
4121 Cromwell Road
Chattanooga, TN 37421
Phone: 423/892-2846
Fax: 423/889-4869

President's Message

(continued from page 1)

videotape interesting, the project is highly likely to be appreciated by the planned audience. The nice thing about video recorders is that the second or third time around they don't get bored or make nasty comments.

I would like to encourage clinics, layout visits and show-and-tell sessions as a regular part of our Division meetings. The feed-back from the joint meeting with the Green Mountain Division last spring in North Conway was that at least twice a year we should consider expanding meetings to include a program of clinics and presentations. This is a good idea! Finding locations is not a real problem. We need people who will volunteer to do the clinics, presentations and layout tours.

You do not need to do a 45-minute clinic with overheads, handouts and colored lights. Simple five to 15-minute show-and-tell sessions on how you developed your latest modeling effort can be equally informative and entertaining. Layout visits can also be simplified by limiting hours, using sign-up sheets, etc.

If you want the opportunity to practice your skills as a presenter, the Great Falls Model Railroad Club is recruiting clinicians for appropriate presentations at the planned RailClinic 2000 next March. With even less notice, you can practice on the members in attendance at practically any Seacoast Division meeting. We welcome your participation.

Division Business

Minutes of June 19, 1999 Director's Meeting

by Terry King, Secretary

The spring 1999 meeting of the Executive Committee was held on June 19, 1999 at the home of Sandi and Ron Palmquist in Cape Elizabeth.

In attendance were Larry Cannon, president, Terry King, secretary and Sandy Roberts and Ron Palmquist, directors.

The minutes of the previous meeting (February 20, 1999) were approved without change.

Because the treasurer (Tim Byrne) was out of the country, we did not have a treasurer's report.

A nominating committee was appointed. It's members are Sandy Roberts, Ron

Palmquist and Tim Byrne. The terms of Ron Palmquist, Walter Ronfeldt and Sandy Roberts are up for election this year. The term of office is three years. Our officers are elected in the following years: 1996 - Roberts, Ronfeldt and Palmquist (1999); 1997 - Larry Cannon and Ray Houlihan (2000); 1998 - Terry King and Al Thurston (2001).

The next meeting will be on September 9 at The Great Falls Model Railroad Club in Lewiston at 7:00 p.m.

The annual meeting was discussed and we will be having contests; the date will be set in September.

It was voted to once again have a joint meeting with the Green Mountain Division, to be held next spring in Intervale, N.H. This will feature a program and contests.

Richard Breton was approved as our new vice-president.

The meeting closed at 3:30 p.m.

Minutes of September 9, 1999 Director's Meeting

The meeting was opened at 7:30 p.m. with Sandy Roberts, Richard Breton, Larry Cannon and Terry King present.

The nominating committee presented its report: Nominated were Walter Ronfeldt, Richard Breton and Ron Palmquist. The report was accepted and nominations closed until the annual meeting.

Tim Byrne was appointed Photo Contest chairman and Dwight Smith was appointed chairman of the model contest. It was decided to have a popular vote model contest (anything goes) at this year's annual meeting.

The date of the annual meeting was set for Oct. 23 at 1:00 p.m. The location is to be The Great Falls Model Railroad Club at 5 Canal St. Alley in Lewiston, Maine. There will be clinics: Larry Cannon will give one, to be announced; Richard Breton will present Selective Compression of Buildings; and, Terry King will

(continued on page four)

St. James & Sandy River Rwy

Route of the

MAINE Train

Cape Elizabeth, Maine

207/799-1761

Clinics are highlight of Annual Meeting

by Terry King

Those attending the (Seacoast Division) annual meeting were treated to four clinics for tolerating the business portion of the meeting (see secretary's report on page one for details). The presentations covered different areas, and included tips and ideas applicable to all scales.

Terry King led off with his ideas for salvaging and creating usable structures from the less-than-contest-quality efforts of other modelers. He described painting and weathering changes to conceal model defects. Terry also explained how to use ground foam vines to cover a multitude of modeling sins. Terry's clinic was good for the faint of heart who pass on used structures at train shows.

Richard Breton dealt with the ins and outs of creating very realistic scale junk from prototypical (1:1) junk. Coke cans, children's broken toys, house flashing, old ship models and a variety of other objects fell victim to a hammer which would scare the heck out of your average mugger. He also outlined the rationale for selectivity in size and quality of scale junk—a written description will not suffice for that topic.

Richard also displayed what could be called "washing machine" painting and weathering of scale junk that is very simple and effective. His clinic included excellent examples of work in progress and how to integrate his ideas into your modeling. Richard will repeat this presentation at Rail Clinic 2000 in North Yarmouth, Maine, on March 18, 2000.

Sandy Roberts offered his thoughts and his experience servicing and maintaining Lionel locomotives. His clinic was generalized and applicable to maintaining locomotives in all scales. Sandy displayed a locomotive work stand that could be built in any scale for 50-cents or less. He covered the basics of lubrication and electric motor maintenance which all modelers can use.

Larry Cannon's clinic covered the planning and building of small streams on new and existing layouts. He started by explaining why real railroads have more stream crossings than model railroads—model railroaders tend to ignore geography. Larry covered a number of design considerations and options using portions of the Great Falls Model Railroad Club layout as examples. The clinic concluded with basic construction concepts, materials options, experiences to avoid and finishing touches.

Those not in attendance missed an excellent series of educa-

tional presentations that would add to any modeler's skills.

Our goal at all future Division meetings, volunteers willing, is that we will continue to have clinics and other presentations attractive to members, prospective members and guests.

From the Editor's Desk



Pike Ads

We begin *The Switch Tower* Layout Registry in this issue of the newsletter. It's an idea stolen from *Red Markers*, the Central New York Division newsletter (fearlessly predicted by **Joe Popecki**, Editor, in the most recent *NER Coupler*). The layout ads were approved by the directors at the recent annual meeting. (See details elsewhere in this issue.) We have two listings so far. If interested, send ad copy and a check to the Editor. (Note deadlines on back page.)

Trivia

George Westinghouse invented air brakes for railroads. Can you name his other two rail-related inventions?

Franklin & Manchester

The Franklin & Manchester Railroad at Peabody, Mass., is an awesome model railroad. I was the guest of friends at the September open house: It was a trip to remember. George Selios' attention to detail is well-documented, but I don't think I believed it until I saw it—and saw it again. Unlike many model railroads, the trains and tracks of George's display almost take a backseat to his scenery. City-scenes contain so much detail it's almost too much. Too Much! Selios' creation is open to the public during the warmer months of the year. So, mark your spring 2000 calendar. You'll be glad you did.

Sidebar

Think you've seen everything? Traveling southbound on the Maine Turnpike headed for Peabody someone in the car pointed to the bottom section of the driver's side of a van we were about to pass. The lower side-panel artwork looked like a stylized, European-type express train. *Choo Choo Custom* was the logo-type on the lower rear panel of the Dodge—or was it a Chrysler? Whatever.

George Westinghouse

In addition to the air-brake, George Westinghouse invented frogs for railroad turnouts and re-railing frogs for railroad cars and engines.

100 Years Ago

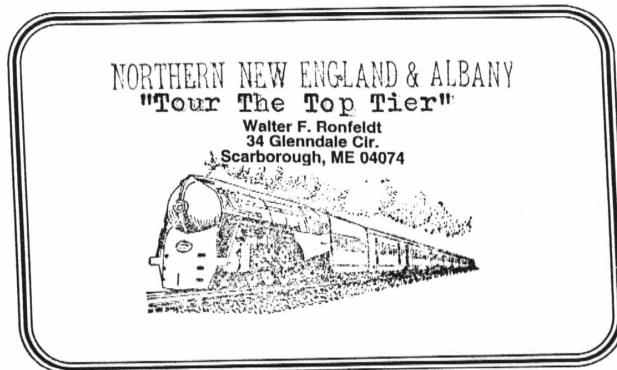
The Bar Harbor train that goes through Lewiston every noon is the largest passenger train on the upper route (of the Maine Central Railroad). It almost never has less than 12 cars.

—from the files of the Lewiston Daily Sun

Ought-Two, Ought-Three—Hut-Hut

A new year's greeting takes an added twist this year as we say good-bye to the Twentieth Century and say hello to the Twenty-first. A puzzlement: When referring to the new year, can we say or write the contraction '00 (double-oh, double-zero)? Or, should we say ought-ought (double-ought)? Or, just plain 2000 (2-thousand). New millennium lingo, eh? Well, from this corner to all of you out in New Millennium-land, just a plain old Happy 2-triple-ought!

—Ron Palmquist



The Switch Tower

1999-2000 CALENDAR

Listed below are a number of upcoming events of interest to model railroaders living in the Maine and New Hampshire territory of the Seacoast Division, NMRA. Please contact the editor if you have an event to publicize in our Calendar.

1999

December 8-24, 26-30 -- 1999 Winterfest Express (Third Annual Holiday Lighting Festival), Maine Narrow Gauge Railroad Co. & Museum, 1 India St., Portland (Co-sponsored by The Rotary Club of Portland). Hours: 4:30 p.m. (first train) to 8:30 p.m. (last train). Ticket prices: \$6 adults, \$4 children, under 3 free (no credit cards). Info: 207/842-1808.

2000

February 5-6, 2000 -- Millennium 2000 Railroad Hobby Show, sponsored by Amherst Railway Society, Eastern States Exposition Grounds (Better Living Center, Young Bldg., Stroh Bldg.) W. Springfield, Mass. Daily Admission \$6. Info: SSAE to P.O. Box 718, Warren, MA 01083.

March 18 -- Rail Clinic 2000, North Yarmouth, Maine. A day-long schedule of clinics for model railroaders. Co-sponsored by The Great Falls Model Railroad Club and the Seacoast Division, NMRA. Info: Terry King, phone & FAX: 207/933-2477, or, tking@megalink.net

June 9-11 -- NER Spring 2000 Convention (Rails in the Northeast Kingdom), Lyndon State College campus, Lyndonville, Vermont. Host: Green Mountain Division, NMRA. Info: Dave Camber 802/626-9254. E-Mail: dave@together.net

June 10 -- Model Railroad Show, Fenton Chester Arena (Exit 23, I-91), Lyndon Center, Vermont. Sponsored by Lyndon Center Sports Association with the help of the NC Model Railroaders. Donation \$2, under 12 free. Info: Bill Johnson 802/592-3362. E-Mail: rockney@together.net or Dave Camber 802/626-9254. E-Mail: dave@together.net

Deadlines for Year 2000 issues of The Switch Tower

- ✓ Vol. VI, No. I -- Friday, February 4, 2000
- ✓ Vol. VI, No. II -- Saturday, April 1, 2000
- ✓ Vol. VI, No. III -- Wednesday, July 5, 2000
- ✓ Vol. VI, No. IV -- Monday, October 2, 2000

Division Business

(from page two)

give one on Refinishing Buildings by People Who THINK They're Modelers.

Rail Clinic 2000 was discussed; it will be held on March 18th in North Yarmouth, Maine.

The meeting adjourned at 8:15 p.m.

Respectfully Submitted,

Terrence P. King, Secretary

100 Years Ago

"If it is possible to reduce local fares, we are told General Manager Tuttle of the combined B. & M. and Maine Central will give us such a blessing in Maine. The policy of loading cars with passengers is working nicely for the road and for the public. Cheap round fare tickets between Lewiston and points east as well as along the route from Brunswick east, in our judgement would help both the public and the railway."

—from the files of the Lewiston Daily Sun

Company Store

Secretary Terry King has Seacoast Division patches. If interested, contact him at:

Terrence P. King, Secretary

Seacoast Division, NMRA

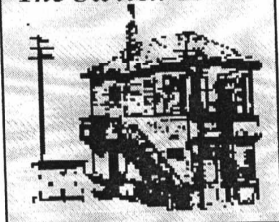
P.O. Box 188

E. Livermore, ME 04288-0188

SEA COAST DIVISION, NER—NMRA

c/o Ron Palmquist
P.O. Box 229, Cape Cottage Branch
Cape Elizabeth, ME 04107-0229

The Switch Tower



Address Service Requested

DUES ARE DUE



RICHARD BRETTON
9 RIVERSIDE DR
ROCHESTER, NH 038671120