

# NEW EDITOR NAMED — D. S. DECKER TAKES TOP POST

## WINTER 1970



### 88

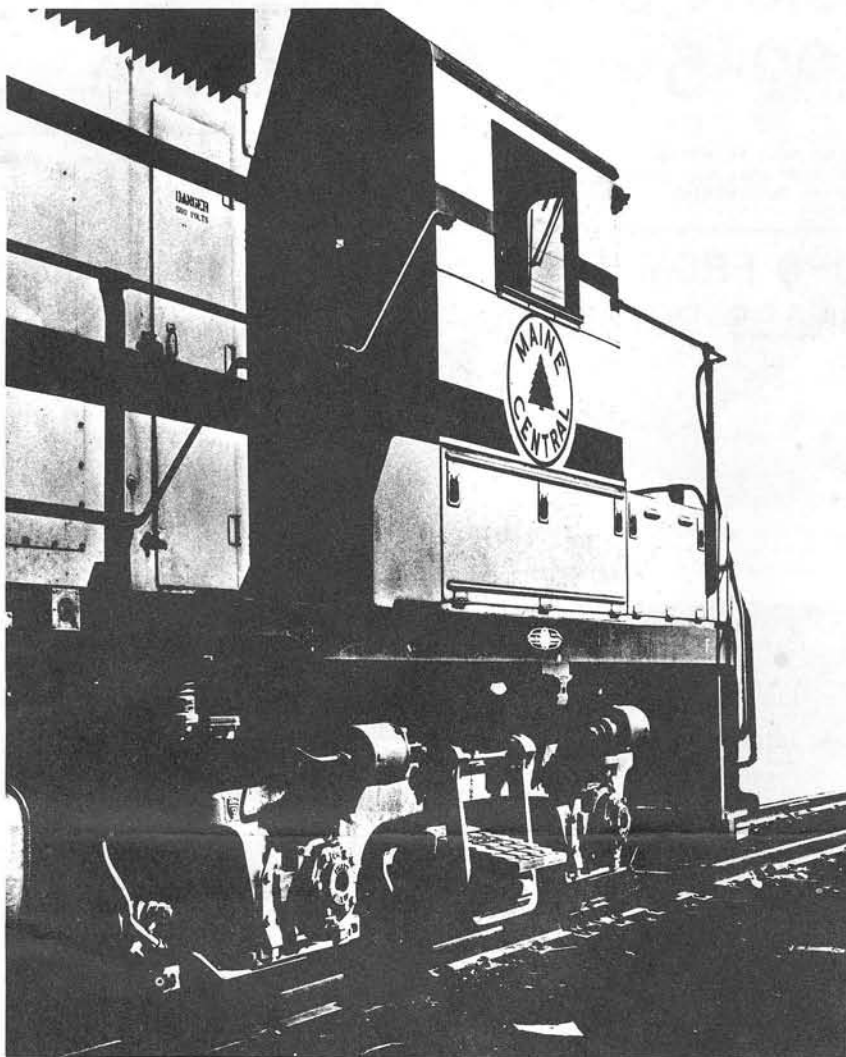
After a very heated discussion at the December 7th BOD meeting, the Board voted to retire the former Coupler Editor. On January 31st a new Editor was appointed.

Following the retirement of the former Editor the BOD entered into acceptance of a new set of By-Laws to support the Constitution which was adopted at the Fall Convention in E. Orange, New Jersey. You may get a copy of the new Constitution and By-Laws by writing to Paul Mallory; 94 Oakwood Drive; Murray Hill, New Jersey, and ask for them.

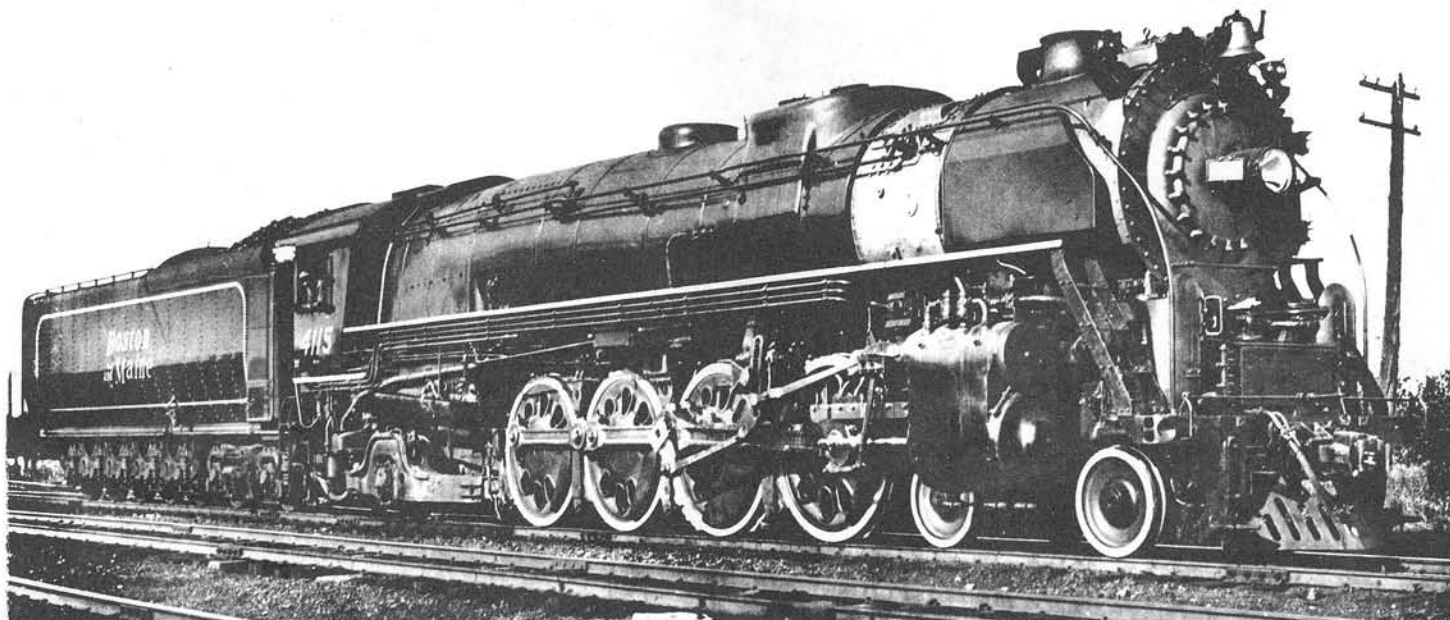
Approval was also given for the Spring Convention site in North Conway, New Hampshire. This Convention shapes up as being one of the most exciting and photogenic in several years. The Cog Railway up the west slope of Mount Washington has already been confirmed as a Fan Trip with the possibility of a second steam Fan Trip. Clinics, displays and films will be very plentiful for the entire weekend. Saturday evening will see the Model Rails sit down to one of the best cooked dinners that can be served in New England.

The Nominating Committee is looking for nominations for the elective offices. If you have a person to nominate for office you should contact the representative in your area. They are: Bill Jambor, New Jersey; Jack MacIntosh, Long Island and New York City; Charlie Bettinger, Connecticut; Ed Kuhn, Massachusetts; and Tom Massingham in Maine, New Hampshire, and Vermont. People in Canada and New York State should contact Bill MacIver, com. chm for instructions to nominate candidates.

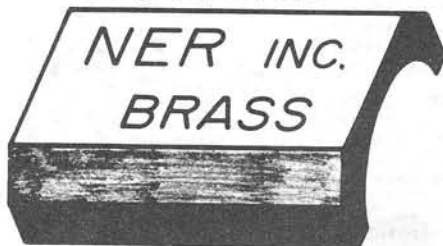
The next issue of the Coupler will have plans of the Fox Hill School, Snow Sheds and more.



Above MEC GP-38 #257 at Portland's Rigby Yard during the summer of 1969 by Dick Towle. Below, B&M #4115 at Rigby in 1941 by Harold Boothroyd.



Official Bulletin of the N. E. R. of the  
N. M. R. A. Subscription \$3.00 for 2 yrs  
\$6.00 for 5 yrs, \$30.00 Life.



**PRESIDENT** Richard Towle  
P. O. Box 328  
Manchester, MA, 01944

**VICE PRESIDENT** Graham Harvey Jr.  
P. O. Box 231  
Rockville Centre, N. Y, 11571

**SECRETARY** David Marlowe  
126 Winchell Road  
University Heights  
Syracuse, N. Y, 13210

**TREASURER** Frank Skutsch  
56 Commander Avenue  
Garden City, N. Y, 11530

**CANADIAN TREASURER** Gordon Teel  
172 des Marguerites Avenue  
Chateauguay, Quebec, Canada

**BOARD OF DIRECTORS** Jack Alexander  
111 South Street  
E. Bridgewater, MA, 02333

Dr. John F. Dias Jr.  
227 Union Street  
New Bedford, MA, 02740

L. Jeff French  
270 Duncastr Road  
Bloomfield, Conn, 06002

Ralph Higgins  
24 Powder Ridge Road  
Hazardville, Conn, 06036

Peter Hugger  
812 Prospect Street  
Westfield, N. J, 07090

Paul Mallery  
94 Oakwood Drive  
Murray Hill, N. J, 07971

Gordon Teel  
172 des Marguerites Avenue  
Chateauguay, Quebec, Canada

Glenn Wagner  
P. O. Box 262  
Delmar, N. Y, 12054

**OFFICE MANAGER** Toni Marlowe  
126 Winchell Road  
University Heights  
Syracuse, N. Y, 13210

**MEMBERSHIP CHAIRMAN** D. Stanley Decker Sr.  
20 Reo Road  
West Peabody, MA, 01960

**ACHIEVEMENT CHAIRMAN** Donald Robinson  
408 Davis Street  
Greenfield, MA, 01301

**HISTORIAN** Dr. John F. Dias Jr.  
227 Union Street  
New Bedford, MA, 02740

**MODEL CONTEST CHAIRMAN** Gordon Teel  
172 des Marguerites Avenue  
Chateauguay, Quebec, Canada

**PIKE REGISTRATION** William J. Kelly Jr.  
66 Constellation Drive  
Levittown, N. Y, 11756

**INDUSTRIAL EXHIBITS** Hal Smith  
P. O. Box 315  
Cossayuna, N. Y, 12823

# REGION DUES \$3.00 - 2 yrs \$6.00-5 yrs, \$30.00-life

Correction---  
The new dues rate is above. This is a correction over what was printed in the last issue of the Coupler. Sorry for the blooper.

## A WORD FROM THE BRASS POUNDER

Instead of the usual Presidents column being found in this space, I have written a special letter which you will find elsewhere in this edition of the "Coupler."

I feel that the space used for the Presidents Column will be better used at this time for modelling material, and with a new and enthusiastic staff for the Coupler I wanted them to be able to present all of the material which has been sent to us for publication.

In the letter found elsewhere you will find announcements and reports of our activities since the last "Coupler" was published in January.

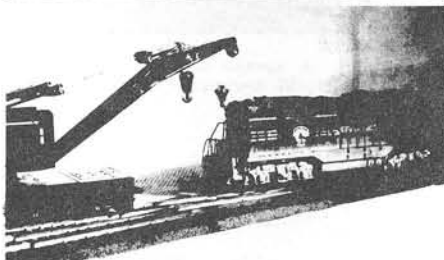
### 100% NER Clubs

Winoski Valley Model Railroad Club  
Quarry Hill Dr; R. D. 2; Barre,  
Vermont, 05641

Berkshire Model Railroad Club  
% Kirk's; 784 Tyler St; Pitts-  
field, MA, 01201

The Summit-New Providence HO Railroad  
Club— 94 Cakwood Dr; Murray  
Hill, N. J, 07971

Garden State Central HO Model Railroad  
Club— 160 Broadway; Long Branch,  
N. J, 07740



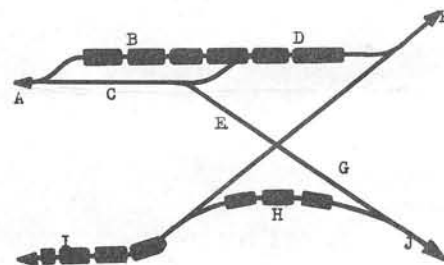
The Coupler is Rerailed

## OPERATING PROBLEM

by Donald S. Robinson MMR

Train at point I is going to point J and must pick up cars at point H behind engine. Cars at point B-D may be moved but must be returned to their present location. The train is too long to fit at either point B or point C between crossover and switch. This operation can be carried out in eleven moves although a more practical railroader would use a twelve move solution. See what you can do. As usual a change of direction or coupling or uncoupling constitutes the end of a movement.

(This is an interesting problem and would make a great addition to an operating session on your layout. I did this problem and came out with eleven moves the first time, but after seeing Don's twelve move solution, I have to agree that twelve is better and faster. ED.)



Send all replies to Donal S. Robinson;  
P. O. Box 70; Greenfield, MA, 01301.

Good luck. A list of those with correct solutions will appear in an early Coupler.

For those with a little time for teasing the mind try leaving all cars at their present locations and still get the train from point I to point J. The same rules are in effect. Cars at point H and point B-D can be moved, but must be returned. (ED. did this one in twelve moves.)

## THE CREW

**CONDUCTOR..Editor.....** DAVID S. DECKER Sr.  
20 REO ROAD  
W. PEABODY, MA, 01960

**ENGINEER.....** Assistant Editor.. DONALD MINNICH

**FIREMAN.....** Production Mgr... JACK BROWN

**BRAKEMAN...Feature Editor....** GEORGE KONRAD

**BRAKEMAN...Photo Editor.....** DICK TOWLE

# EDITOR SOUNDS OFF

As I'm in the process of putting together your next issue of the Coupler and my first issue as editor I can't help of thinking of a letter to one of the former editors of the Coupler, less than three short years ago. The issue in mind is number 78 and the letter is reproduced in part as follows:

"... I joined the NMRA in 1963, the NER for the initial year 1963. I dropped my membership in the NER the following year because it (the NER) didn't offer a program or publication that interested me." Two years later this member paid life dues to the NMRA and NER. "... One person or a small handful of people, cannot and should not be expected to supply all of the material that is needed....."

This, I hope will show the point I'm getting at. See what happens when someone puts his foot in his mouth. Three years ago when I wrote the above letter of the editor, Jeff French, I never had a dream that I would be the editor of your Coupler.

And that is exactly what I want this to be, your Coupler. I have no desire to write a large amount of material for this paper. If you have a complaint or feel something is needed, slap some paper into your handy dandy writing machine and go at it. When finished, slip it into an envelope and mail it to me. The same is true for photographs and plans. Without your help you may see an unending stream of article that are of no interest to you, but of a great deal of interest to the Coupler Staff.

As editor I will assemble all your

news and articles for your paper. I will not write your paper.

Division Secretaries are hereby notified to send all info to me if you want it published in the Coupler. Some examples of this type of news will be found on page 6.

Now for a few words about the Staff that has been assembled to put your Coupler in the form in which you receive it from the mailman.

Donald Minnich is the Assistant Editor. He is an N gaugeur from way back. His craftsmanship will be shown in the future if space and a shortage of material exist.

Next is our Feature Editor, George Konrad. He has a number of interesting thing cooking in his type-writer.

Dick Towle is the Photo Editor.

Jack Brown is the Production Manager. He will take care of all the business details.

*Have*

## ANNUNCIATOR BY DON MINNICH

So often in this hobby, we forget our minority gaugeurs. If you have helpful tidbits you would like to share, send them to me. If we use your hints, you will receive a useful gift. Save LARK filters as the charcoal makes dandy scale coal.

F O R S A L E ... Brand new, painted only. ALCO MODELS 2 each C-630, C-420, DL-640. One S-2. PERFECT SCALE MODELS two C-415's. Total price \$250.00 plus custom cabinets and lots of spare part and tools. A Real GOOD buy. Contact George F. Shambarger, 7 Geneva Ave, Lynn, MA, 01905

L O S T .... If you know the location of any of the following members please notify the Office Manager. Their last known address is with the name.

Howard Anderson, Comack, N. Y.  
William Stevens, Salem, MA.  
David Woodhead, Montreal, Que.  
Peter Gray, W. Paterson, N. J.  
H. A. Calvin, Westmont, Que.  
Magt Richard C. Schaefer, APO N. Y.  
David L. Best, Montreal, Que.  
Robert Ong, E. Orange, N. J.  
Carey Kennedy, E. Brunswick, N. J.



A Menu from the D & R Diner. One of the delicacies frequently enjoyed by "patrons" on Delaware & Raritan Dining Cars, from Charles F. Gerow Jr, Superintendent of Dining Cars of the D & R Ry Co.

## Grapefruit Glacé

While relatively simple to make and serve, the contrasting flavors of the ingredients will delight your guests, and add that extra something to your roads dining service.

Fresh grapefruit should be carefully chosen, by gently squeezing the skin of the fruit; it should feel tender, yet firm, and the skin should be uniform in color, without large blemishes. (Small pinhead-sized brown spots may indicate the ripeness of particular varieties.) The fruit should be selected no more than two days previous to serving.

Slice the fruit in half, one half per portion, on the plane perpendicular to the axis of the stem. With a grapefruit knife, loosen the fruit from the skin, and remove the center portion of the fruit to a 1½ inch diameter. In the center place a scoop of Chocolate-Mint Ice Cream, topping with a Maraschino Cherry if desired for added color.

Serve immediately, and Bon Appetite.

# LINE UP

## NATIONAL

August 20 - 23 NMRA convention in St. Louis, Mo. Write to Joe Bothman, 1300 West Adams Ave, Kirkwood, MO, 63122.

## REGIONAL

June 5, 6, 7, 1970. North Conway, N. H., NER Spring Convention hosted by Seacoast Division. Cog Railway Fan Trip, Clinics and more.

October 8, 9, 10, 1970. Binghamton, N. Y., NER Fall Convention to be jointly run by the NER, MER and NFR.

## DIVISIONAL

March 14 Nutmeg at Hartford Workshop. Contact Ted Ritter, RR 342 Sunset Terr, Vernon, Conn, 06086.

April 4th Hub Division Little Convention Farm Rd, Marlboro, Mass. Contact Bill Parker, 65 Coweaset Dr, Brockton, MA, 02401.

April 11th Garden State Division will hold a Little Convention at the Watchung Valley Club. Write Bill Jambor, 149 Sandford St, New Brunswick, N. J., 08902 for info.

May 2. Little Rhody Division will hold an Open House in Providence, R. I. Write to John Keavy, P. O. Box 214, South Station, Fall River, Mass, 02724.

## CLUBS

April 10, 17, 24 7:30-10:00 pm. 12, 19, 26 2:30-6:00 pm. Newark, N. J., Model RR Club Open House 3rd floor, 337 5th St, Newark. FREE FREE FREE Admission. O gauge layout with outside 3rd rail operation.

April 3 - 19 inclusive. New York Soc. of Model Engineers Annual Show in Carlstadt, N. J. Contact Howard Georga by phone for info. Number 201-754-2563.

April 5th. Hockomock RR Club Annual show at Frothingham Hall, Barrows St, North Easton, Mass, 02356. 1 pm - ?

## CALL BOARD continued

Brian J. O'Neill Rt. 32 River Rd. Upper Blackeddy, PA 18972  
Ed Openheimer 175 Princeton Rd. Rockville Centre, NY 11570  
Arthur Pariseau 138 North St. Salem, MA 01970  
Sandra Pasko 63 Hoffman St. Torrington, CT 06790  
Eugene L. Phillips 191-30 120 Ave. St. Albans, NY 11412  
Lynn B. Phillips 6 Sturdy St. Attleboro, MA 02703  
George Rowland 156 Dwight Ave. Hillsdale NJ 07642  
Donald P. Sanger Box 143 Stafford, CT 06075  
Bob Silveria 14960 Story Road, San Jose, CA, 95127

Richard J. Schrowang 75 Ramsey Rd. Middlesex, NJ 08846  
George Schwarting 100-31 Metropolitan Ave. Forest Hills, NY 11375  
Rev. Frank L. Seidmore 799 Second Ave. N.; Troy, NY 12182  
Arthur Sessa 27 Autumn Circle Yonkers, NY 10703  
David Smith 72 New Hampshire St. Millinocket, ME 04462  
Phil Smith, Jr. 565 Riverside Dr. Augusta ME 04330  
Albert Stalling Station Ave. Box 35 Groton, MA 01450  
Walter J. Swarkoski 95 India St. Brooklyn, NY 11222  
John B. Swift 80 Friendship Lane Toms River, NJ 08753  
Robert E. Sykerlski 86 Vliets Lane Spotswood, NJ 08884  
Frank A. Taylor 328 Cook Ave. Middlesex, NJ 08846  
Allen M. Tenney 11 Union St. St. Johnsbury, VT 05819  
Richard W. Tinkham 430 Long Pond Dr. So. Yarmouth, MA 02664  
David A Towle 5600 Lee Highway, Apt. 205 Arlington, VA 22200  
Ray Towle 28 Harold St. Florence, MA 01060  
Stan Warden 125 Gaston St. Medford, MA 02155  
John W. Wesner, Jr. 63 Glendale Dr. Freehold, NJ 07728  
Paul L. Wheeler 33 Ellsworth Ave. Staten Island, NY 10312  
Russell S. White 55 Huntington Ave. Sharon, MA 02067  
Henry Wilhelm 31 Ridgedale Ave. Summit, NJ 07901  
Robert Winkler 724 Grove St. Rahway, NJ 07065



# EDITOR SOUNDS OFF

As I'm in the process of putting together your next issue of the Coupler and my first issue as editor I can't help of thinking of a letter to one of the former editors of the Coupler, less than three short years ago. The issue in mind is number 78 and the letter is reproduced in part as follows:

"... I joined the NMRA in 1963, the NER for the initial year 1963. I dropped my membership in the NER the following year because it (the NER) didn't offer a program or publication that interested me." Two years later this member paid life dues to the NMRA and NER. "... One person or a small handful of people, cannot and should not be expected to supply all of the material that is needed....."

This, I hope will show the point I'm getting at. See what happens when someone puts his foot in his mouth. Three years ago when I wrote the above letter of the editor, Jeff French, I never had a dream that I would be the editor of your Coupler.

And that is exactly what I want this to be, your Coupler. I have no desire to write a large amount of material for this paper. If you have a complaint or feel something is needed, slap some paper into your handy dandy writing machine and go at it. When finished, slip it into an envelope and mail it to me. The same is true for photographs and plans. Without your help you may see an unending stream of article that are of no interest to you, but of a great deal of interest to the Coupler Staff.

As editor I will assemble all your

news and articles for your paper. I will not write your paper.

Division Secretaries are hereby notified to send all info to me if you want it published in the Coupler. Some examples of this type of news will be found on page 6.

Now for a few words about the Staff that has been assembled to put your Coupler in the form in which you receive it from the mailman.

Donald Minnich is the Assistant Editor. He is an N gauger from way back. His craftsmanship will be shown in the future if space and a shortage of material exist.

Next is our Feature Editor, George Konrad. He has a number of interesting thing cooking in his type-writer.

Dick Towle is the Photo Editor.

Jack Brown is the Production Manager. He will take care of all the business details.

*Have*

## ANNUNCIATOR BY DON MINNICH

So often in this hobby, we forget our minority gaugers. If you have helpful tidbits you would like to share, send them to me. If we use your hints, you will receive a useful gift. Save LARK filters as the charcoal makes dandy scale coal.

FOR SALE... Brand new, painted only. ALCO MODELS 2 each C-630, C-420, DL-640. One S-2. PERFECT SCALE MODELS two C-415's. Total price \$250.00 plus custom cabinets and lots of spare part and tools. A Real GOOD buy. Contact George F. Shambarger, 7 Geneva Ave, Lynn, MA, 01905

L O S T .... If you know the location of any of the following members please notify the Office Manager. Their last known address is with the name.

Howard Anderson, Comack, N. Y.  
William Stevens, Salem, MA.  
David Woodhead, Montreal, Que.  
Peter Gray, W. Paterson, N. J.  
H. A. Calvin, Westmont, Que.  
Magt Richard C. Schaefer, APO N. Y.  
David L. Best, Montreal, Que.  
Robert Ong, E. Orange, N. J.  
Carey Kennedy, E. Brunswick, N. J.



A Menu from the D & R Diner. One of the delicacies frequently enjoyed by "patrons" on Delaware & Raritan Dining Cars, from Charles F. Gerow Jr, Superintendent of Dining Cars of the D & R Ry Co.

## Grapefruit Glacé

While relatively simple to make and serve, the contrasting flavors of the ingredients will delight your guests, and add that extra something to your roads dining service.

Fresh grapefruit should be carefully chosen, by gently squeezing the skin of the fruit; it should feel tender, yet firm, and the skin should be uniform in color, without large blemishes. (Small pinhead-sized brown spots may indicate the ripeness of particular varieties.) The fruit should be selected no more than two days previous to serving.

Slice the fruit in half, one half per portion, on the plane perpendicular to the axis of the stem. With a grapefruit knife, loosen the fruit from the skin, and remove the center portion of the fruit to a 1½ inch diameter. In the center place a scoop of Chocolate-Mint Ice Cream, topping with a Maraschino Cherry if desired for added color.

Serve immediately, and Bon Appetite.

# LINE UP

## NATIONAL

August 20 - 23 NMRA convention in St. Louis, Mo. Write to Joe Bothman, 1300 West Adams Ave, Kirkwood, MO, 63122.

## REGIONAL

June 5, 6, 7, 1970. North Conway, N. H., NER Spring Convention hosted by Seacoast Division. Cog Railway Fan Trip, Clinics and more.

October 8, 9, 10, 1970. Binghamton, N. Y., NER Fall Convention to be jointly run by the NER, M&P and NFR.

## DIVISIONAL

March 14 Nutmeg at Hartford Workshop. Contact Ted Ritter, RR 342 Sunset Terr, Vernon, Conn, 06086.

April 4th Hub Division Little Convention Farm Rd, Marlboro, Mass. Contact Bill Parker, 65 Coweaset Dr, Brockton, MA, 02401.

April 11th Garden State Division will hold a Little Convention at the Watchung Valley Club. Write Bill Jembar, 149 Sandford St, New Brunswick, N. J. 08902 for info.

May 2. Little Rhody Division will hold an Open House in Providence, R. I. Write to John Keavy, P. O. Box 214, South Station, Fall River, Mass, 02724.

## CLUBS

April 10, 17, 24 7:30-10:00 pm. 12, 19, 26 2:30-6:00 pm. Newark, N. J., Model RR Club Open House 3rd floor, 337 5th St, Newark. FREE FREE FREE Admission. O gauge layout with outside 3rd rail operation.

April 3 - 19 inclusive. New York Soc. of Model Engineers Annual Show in Carlstadt, N. J. Contact Howard Georga by phone for info. Number 201-754-2563.

April 5th. Hockomock RR Club Annual show at Frothingham Hall, Barrows St, North Easton, Mass, 02356. 1 pm - ?

## CALL BOARD continued

Brian J. O'Neill Rt. 32 River Rd. Upper Blackeddy, PA 18972

Ed Openheimer 175 Princeton Rd. Rockville Centre, NY 11570

Arthur Pariseau 138 North St. Salem, MA 01970

Sandra Pasko 63 Hoffman St. Torrington, CT 06790

Eugene L. Phillips 191-30 120 Ave. St. Albans, NY 11412

Lynn B. Phillips 6 Sturdy St. Attleboro, MA 02703

George Rowland 156 Dwight Ave. Hillsdale NJ 07642

Donald P. Sanger Box 143 Stafford, CT 06075

Bob Silveria 14960 Story Road, San Jose, CA, 95127

Richard J. Schrowang 75 Ramsey Rd. Middlesex, NJ 08846

George Schwarting 100-31 Metropolitan Ave. Forest Hills, NY 11375

Rev. Frank L. Seidmore 799 Second Ave. N.; Troy, NY 12182

Arthur Sessa 27 Autumn Circle Yonkers, NY 10703

David Smith 72 New Hampshire St. Millinocket, ME 04462

Phil Smith, Jr. 565 Riverside Dr. Augusta ME 04330

Albert Stalling Station Ave. Box 35 Groton, MA 01450

Walter J. Swarkoski 95 India St. Brooklyn, NY 11222

John B. Swift 80 Friendship Lane Toms River, NJ 08753

Robert E. Sykerlski 86 Vliets Lane Spotswood, NJ 08884

Frank A. Taylor 328 Cook Ave. Middlesex, NJ 08846

Allen M. Tenney 11 Union St. St. Johnsbury, VT 05819

Richard W. Tinkham 430 Long Pond Dr. So. Yarmouth, MA 02664

David A Towle 5600 Lee Highway, Apt. 205 Arlington, VA 22200

Ray Towle 28 Harold St. Florence, MA 01060

Stan Warden 125 Gaston St. Medford, MA 02155

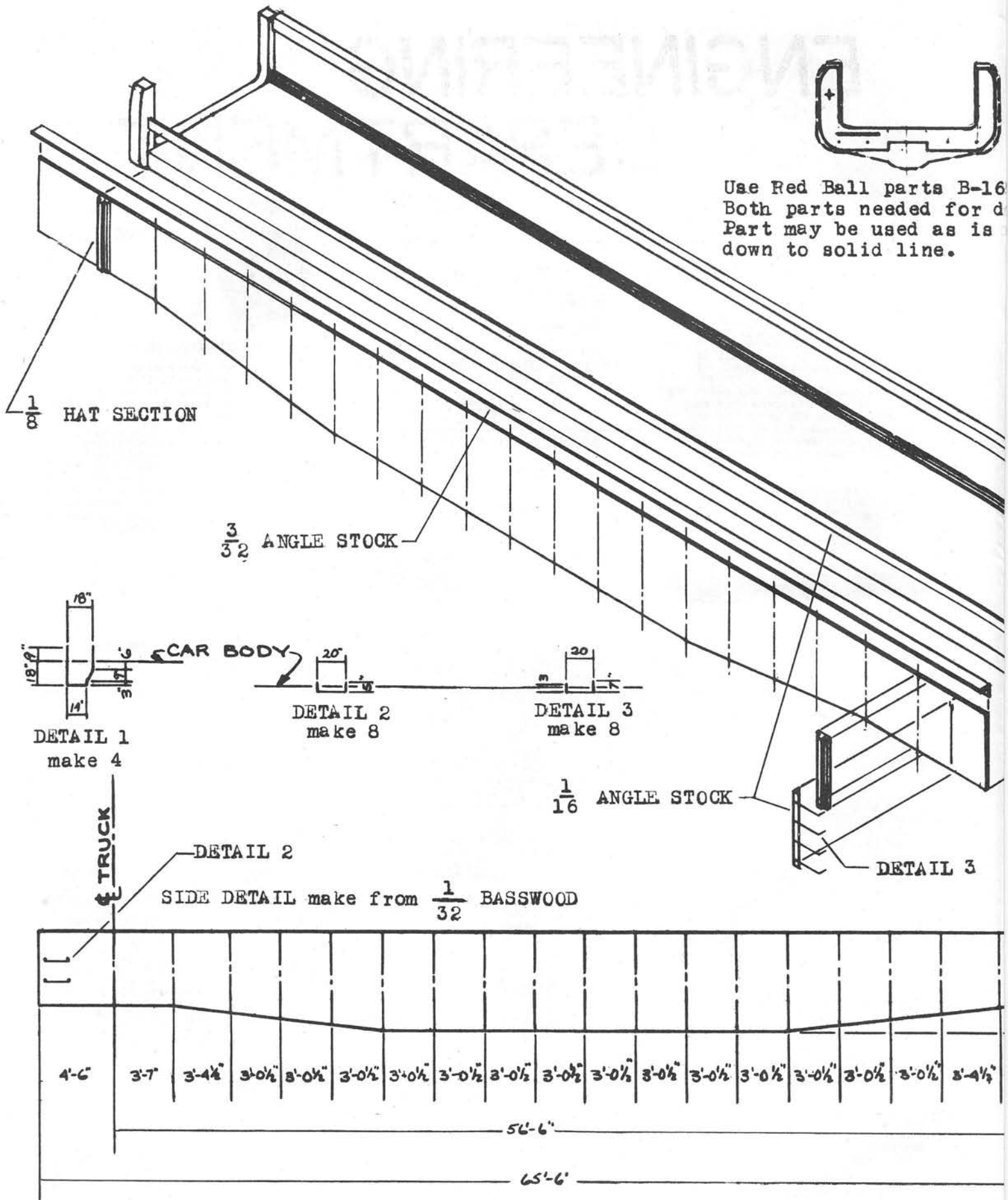
John W. Wesner, Jr. 63 Glendale Dr. Freehold, NJ 07728

Paul L. Wheeler 33 Ellsworth Ave. Staten Island, NY 10312

Russell S. White 55 Huntington Ave. Sharon, MA 02067

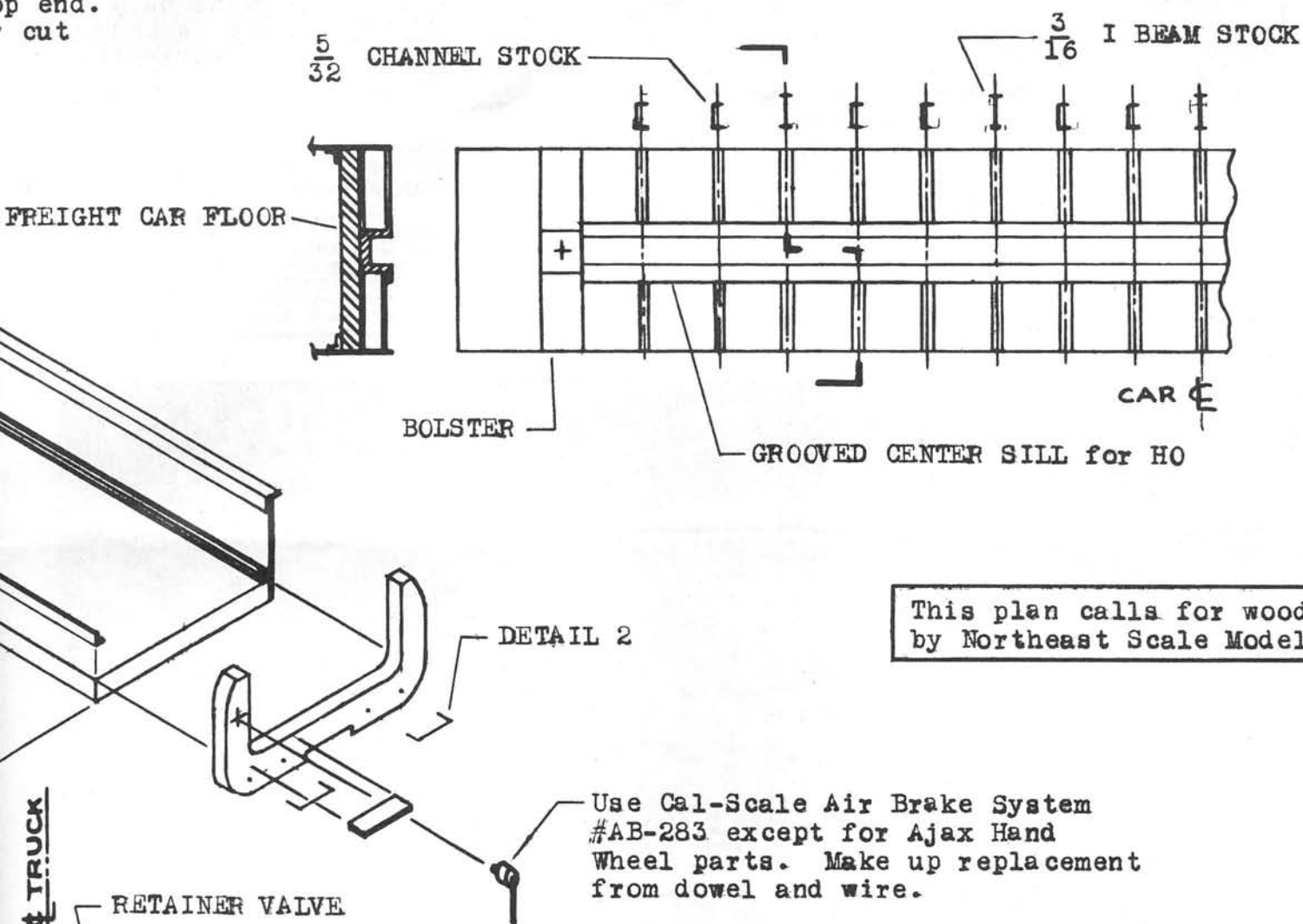
Henry Wilhelm 31 Ridgedale Ave. Summit, NJ 07901

Robert Winkler 724 Grove St. Rahway, NJ 07065



# ENGINEERING DEPARTMENT

& B-170  
up end.  
cut



**65 foot DROP END  
MILL GONDOLA CAR**  
**PULLMAN-STANDARD PS-5**  
**by D. Stanley DECKER**

DRAWING SCALE 3.5mm = 1 ft

# DIVISION HIGHLIGHTS

Photos on  
this page  
by Dick  
Towle

## HUDSON VALLEY

Hudson Valley is still alive. The word is that they have had new elections which has produced the following:

Chairman	Charles D'Elia
Vice Chairman	Peter Allgar
Secretary	Lee Hastings
Treasurer	Kenneth Smith
Board of	Bill Maass
Directors	Allen Hull
	Donald Kelso
	Thomas McLeod

Contact Lee Hastings, sec. H. V. D. at 45 Hall ave, New York City, N. Y. 10956. for more info.

## GARDEN STATE

The G. S. D. will hold there Annual Convention in the central Jersey area, on or about the 11th of April. Club visit and a rail yard visit are planned. Contact Bill Jambor, sec. at 149 Sandford St, New Brunswick, N. J. 08902, for details about this and other plans they have in the next few months.

## HUB

The Hub Division has made plans for there spring convention to be in the Marlboro, Mass. area. It will be held on April 4th. Write to Bill Parker, sec. at 65 Cowesett Dr, Brockton, MA, 02401.

## SEACOAST

We are hard at work planning the NER Spring Convention which looks like a lot of fun and with clinics all over the place. The Fan Trip will be on the World Famous Cog Railway, up the west slope of Mount Washington. The base camp will be in North Conway, N. H. There will be more to say about this soon.

## LITTLE RHODY

John Keavy of Little Rhody Division reports that plans are under way for an Open House to be held on May 2, of this year. It will be housed at Trinity Methodist Church in Providence, R. I. If you would like to help out or desire more info, contact John Keavy at P. O. Box 214, South Station, Fall River, Mass, 02724.

## SUNRISE TRAIL

Contact Robert Sewall at 564 Forest Ave, Massapequa, N. Y. 11758, for info on there next meeting.

## NUTMEG

Write to Ted Ritter, sec, RR 342 Sunset Terr, Vernon, Conn, 06086, for



Hal Smith, publisher, with Paul Mallery and Paul's new book at the E. Orange Convention last fall.

details about forthcoming meeting in the Hartford area at an early date.

## HUDSON-BERKSHIRE

H-B Div. will sponser an Open House on April 19th at the Troy, N. Y. Boys Club, 1700 7th Ave. from 1-5 pm. Operating layouts, displays, Hobby Shop and refreshments. Info from Dave Messer, 12 Hillview Ct, Wynantskill, N. Y. 12198.

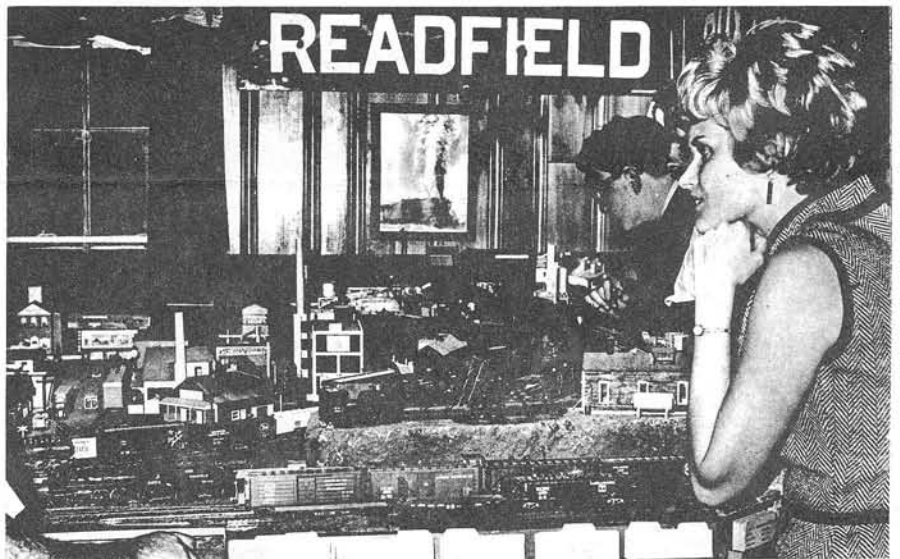
## SEACOAST HOLDS 1st. LITTLE CONVENTION

November 1, 1969 saw Saint Thomas Parish Hall in Dover, New Hampshire invaded by over 100 model railroaders for the Seacoast Divisions first little convention.

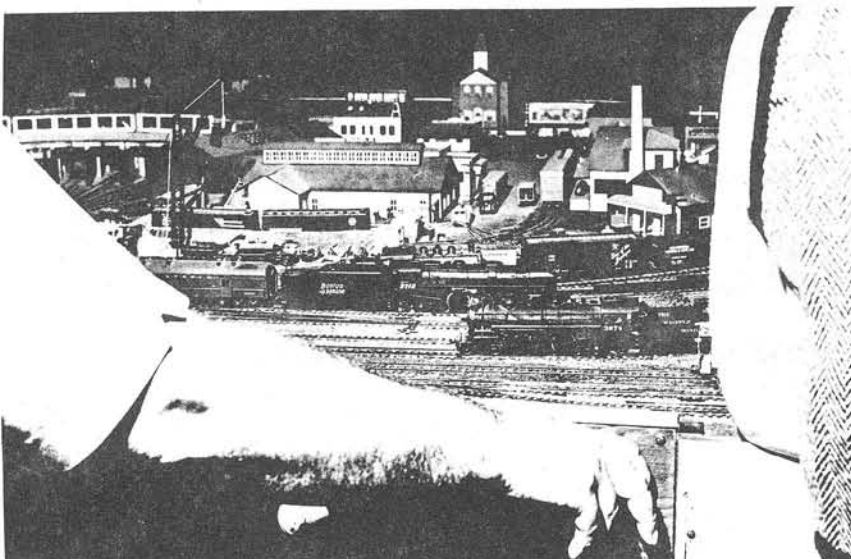
There were movies, slides and displays. The displays ranged from a totally signaled bi-directional N gauge layout by Harold Clark to an O gauge display of circus cars by H. K. Burrill. There was also three operating layouts in attendance.

After the Banquet, which was the best I have seen at a divisional meet, Mr. Hubert Stanley, Director of Safety for the Boston & Maine Railroad gave a short talk about Safety.

Later, those that still had energy, went to view the fabulous layout of Chandler Cobb in Kittery, Maine.



Above the layout of Chandler Cobb, Kittery, Me. has the complete attention of Marsha Hepworth, and George Konrad. Left, another view of the pike which was open for the Dover Convention.



N E R assistant model contest chairman, George Konrad, left, looks over a contest entry at Seacoast Divisions Convention. With George is the model owner Phil Smith Jr. and his wife Debbie from Augusta, Maine.



# 1765 AT LYNN OPEN HOUSE

On January 31, 1970 three divisions, the HUB, Rhode Island, and Seacoast, held a joint Open House in an effort to show some of the many aspects of model railroading. It was located in the East Baptist Church, Lynn, Mass. In the seven hours that the show was open 1765 persons signed in at the registration table.

There were displays of all types from Rhode Island, Massachusetts, Connecticut and New Hampshire as well as movies and refreshments.

Bill Parker reports that he signed up many new members for the NMRA and the Region. A good time was had by all that attended.

Photo Credits this page, Jeff & Jack Alexander



Bill Parker, HUB Division Secretary signs up new member while HUB Chairman, Paul Carlton looks on



Chuck Chiholm of the Bay State Society of Model Engineers with the clubs display.

Hans Schell of Rhode Island Division with O gauge engines



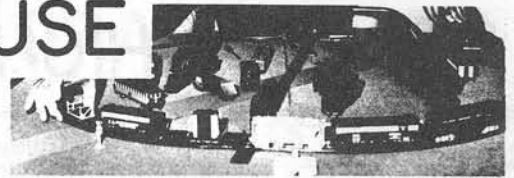
Kevin Doyle with his TAT IV display



Trudi Konrad and friend make trees



Assistant Editor Donald Minnich with his Railroad that travels.



Jack Alexander at work while visitors, John and Judy Curtis, look on.

John Kuppenheimer Jr. of the Worcester Model Rail Roader at work with the air brush.



Don Sanger of Connecticut with his portable layout. He will be at N. Conway with more of his work.





# CALL BOARD

We want to welcome the following  
new members to the Northeast Region

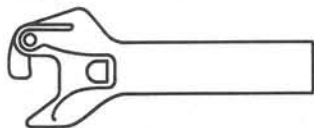
Erwin E. Awerbuch 2325 Ryer Ave. Bronx,  
NY 10458  
Alden Bass R.R. No. 2 Augusta, ME 04330  
David Barlow 11 Birch St. Derby, NH  
03038  
Henry P. Basha 134 Peabody St. Gardner,  
MA 01440  
Donald Beltz 105 Sims Rd. Syracuse, NY  
13210  
O.C. Billings, III Fox Hollow Rd. Con-  
vent, NJ 07961  
Walter C. Bird 9 Shady Lane Oxford, MA  
01540  
T.W. Bossert Box 477 RFD 1 84 Oak Dr.  
North Stonington, CT 06359  
Joseph E. Brand 175 Castlewall Ave. El-  
beron, NJ 07740  
Joel Broidy 21 Magnolia Ave. Floral Park  
NY 11001  
Ernest Brown 290 Laurier Ave. Otterburn  
Park, Quebec, Canada  
Walter Cunan 8 Benton St. Stoneham, MA  
02180  
Edward Cunningham 53 Hudson St. Freehold  
NJ 07728  
John E. Curtis 8 Amero Ct. Gloucester,  
MA 01930  
Donald Davis 93 Leghorn Ave. Somerville,  
NJ 08876  
Charles Lelia 24 Kennedy Dr. West Haver-  
straw, NY 10993  
John E. Desmond, Jr. 24 Scott St. Nauga-  
tuck, CT 06770  
Marlin D. Diehl 65 N. Country Rd. Shore-  
ham, NY 11786  
Kevin Doyle 41 Columbus Ave. Salem, MA  
01970  
Russell H. Driscoll 50 Downing Dr., Apt.  
C. Manchester, CT 06040  
Joseph Ducan, New Lebanon Ctr., NY 12126  
Donald Dugan 80 Rose Terr. Pittsfield,  
MA 01201  
J. Stewart Dunn 7 Porter Rd. No. Reading  
MA 01864  
Bob Dupont 2039 So. Delaware San Mateo,  
CA 94403  
Alan Eastwood 80 Presten Ave. Pittsfield  
MA 01201  
SP/4 J.F. Ellison Box 568, C Co. 808  
Engr. Bn. Const. APO Seattle, WA  
98731  
James R. Faulkner 216 N. 110th St. Seat-  
tle, WA 98133  
Joseph Ferguson, Jr. 33-15 161st St.  
Flushing, NY 11358

Robert Frawley 85-15 250th St. Bellrose,  
NY 11426  
Ken Freeman 200 Gardenia Ave. Chateau-  
guay, Quebec, Canada  
Keith Gatling 53 Asland Ave. E. Orange,  
NJ 07017  
Charles T. Geerz 483 Rhodes Lane West  
Hempstead, NY 11552  
John Giancaspro 95-43 111th St. Richmond  
Hill, NY 11419  
Philip J. Ginkus 148 Lovell St. Worces-  
ter, MA 01602  
Harvey P. Gold 150 Tryon Ave., Apt. G8  
Englewood, NJ 07034  
James Harper, Jr. 107 Imperial Ave. Pit-  
tsfield, MA 01201  
James E. Harrison P.O. Box 156 E. Mont-  
pelier, VT 05602  
Skip Hayden 610 So. Grant San Mateo, CA  
94403  
Kevin Heagney 19 Wiloby Brentwood, NY  
11717  
Ronald Hellwig 8601 5th Ave. No. Bergen,  
NJ 07047  
Ronald S. High Stuart St. No. Oxford, MA  
01537  
Lawrence M. Holland 254 N. Main St.  
Spring Valley, NY 10977  
M.P. Huffman Box 338 Bedford Hills, NY  
10507  
Carol Homuth Harriston, Ontario, Canada  
Carl H. Kahler 288 Mc Connell Ave. Bay-  
port, NY 11705  
Aly Kahn 33 Venedia Ave. Wyandanch, NY  
11798  
Donald Kellso 2 Manor Dr. Monsey, NY  
10992  
James Kelly 15 Dailey Ave. Beverly, MA  
01915  
Jim Kennedy 2039 So. Delaware San Mateo,  
CA 94403  
Ollis A. Kenyon 409 Montrose Ave. Syra-  
cuse, NY 13219  
Richard Kimball 4 School St. Augusta, ME  
04330  
Ronald King 264 Leonard St. Agawam, MA  
01001  
Mike Kirshman 84-54 64th Rd. Middle Vil-  
lage, NY 11379  
Irving Klein 41-80 Denman St. Elmhurst,  
NY 11373  
Dallas R. Knight 492 Elliott St. Bever-  
ly, MA 01315  
Gertrude Konrad 5 Terri Rd. W. Peabody,  
MA 01960

Peter D. LaChapelle 19 Union St. Salem,  
MA 01970  
Frank LaDuca 2345 Crotona Ave. Bronx, NY  
10458  
Allen LaGocki 483 Lower Lang Berlin, CT  
06037  
Walter LaGocki (same address) ↑  
Thomas R. Landrigan Box 27 So. Harwich,  
MA 02661  
Charles LaPorte 22 Glendale Rd. Oakdale  
Rd. Oakdale, CT 06370  
Robert Latham Rocky Hill, NJ 08553  
Frank F. Loffelman, Jr. 178 Shepherd Ave  
Middlesex, NJ 08846  
William G. Lorence 82 Edmore Lane West  
Islip, NY 11795  
Steve Lotito 4 Tibbetts Ave. Danvers, MA  
01923  
Russell S. Lyle 21 Marson Dr. Dayton, OH  
45405  
Paul MacMillen 37 Sherwood Dr. New Prov-  
idence, NJ 07974  
Edwin W. Martin 470 Western Ave. Lynn,  
MA 01904  
John Matthews 25 Barrows St. Brunswick,  
ME 04011  
Joseph McEnery 130 Stuyvesant Ave. Lynd-  
hurst, NJ 07071  
NER WANTS TO GROW-DON'T YOU KNOW OF  
A NAME THAT SHOULD BE HERE???

Donald McGarry 4015 New York Ave. Sea-  
ford, NJ 11783  
Tom McHugh Union Central Transportation  
Co. 18 Oakwood Fl. Delmar, NY 12054  
Albert W. McKie South New Berlin, NY  
13843  
Joseph McLaughlin 325 Wibird St. Ports-  
mouth, NH 03801  
Bennet E. Merry, Jr. 42 Coolidge Rd.  
Danvers, MA 01923  
Andy Miller 2039 So. Delaware San Mateo,  
CA 94403  
Robert Mohowski P.O. Box 405 Franklin  
Lakes, NJ 07417  
Leon Mondelli 66 B Boulevard E. Patter-  
son, NJ 07407  
G. George Moss 595 Elizabeth Ave. Newark  
NJ 07112  
Donald G. Munnich 57-E Garden Rd. North  
Shore Gardens Peabody, MA 01960  
Frank Murray 3846 Voorhis Lane Seaford,  
NY 11783  
William Terry Nesbit 111 Manchester Rd.  
Camp Hill, PA 17011  
Fred Nichols 17 Fairview St. Gardiner,  
ME 04345  
Bill Noll 26 Burnett St. Glen Ridge, NJ  
07028  
Thomas O'Leary G12 Milstone River Apts.  
Princeton, NJ 08540

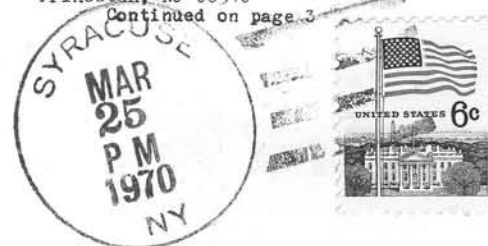
Continued on page 3



NER COUPLER  
TONI MARLOWE, office manager  
126 WINCHELL ROAD  
UNIVERSITY HEIGHTS  
SYRACUSE, NEW YORK  
13210

FIRST CLASS

Robert Strobel  
1203 - 89th St.  
North Bergen, N.J. 07047





THE NORTHEASTERN REGION OF  
*The National Model Railroad Association, Inc.*



February 24, 1970

Dear Fellow Model Railroader and NER Member:

Once again through the medium of a special letter I would like to bring you up to date on events within the Region. In the letter that you received with the last "Coupler" I detailed the problems that the NER faced, and the steps that your Officers, Directors, and Committee Chairmen were taking to alleviate them.

It is with pleasure that we are now beginning to see the fruits of success. A month ago we had the "help wanted" sign out for a "Coupler" Editor. Early in February Dave Decker our Membership Chairman asked if he could take over the editorial chair along with a staff that he had assembled. Since we feel that the "Coupler" is the one very important link between you and the region we took Dave up on his offer, and approximately two weeks later this edition went to the printer. The new staff also consists of Don Minnich, formerly of the Rocky Mountain Region, as Assistant Editor, George Konrad, NER's Assistant Model Contest Chairman who will be handling the model plans section, and Jack Brown as Advertising and Production Mgr.

This edition, number 88 is being printed by a slightly different process, and may have some flaws in it. The type writer used, due the speed with which we wanted to "hit the streets" was borrowed and is about 30 years old, and the photographs were printed and screened in one evening. So, if you will have patience the new staff will get their feet on the ground, and you will get your Coupler 4 times a year, on time!

Our membership rolls are showing a strong growth pattern, with the figures today standing at approximately 900. Office Manager Toni Marlowe will have exact figures in the next Coupler, whose deadline incidentally is March 21st for those of you who have material to be sent in. In percentages your region has approximately a 23 per cent growth rate if renewals, and new member applications were to continue on the same scale over the next calendar year. Of course we know that a large amount of growth is due to the effort currently being put into recovering many of the dropped members of the past few years, and that after a few months the pace will slow down. However, please continue the job of helping NER to grow by signing up your fellow model rails.

Several Divisions have answered our request for help by setting up additional programs, and one of them, Nutmeg is planning to run an Open House Program in the Fall. Hub, Rhody, and Seacoast ran their Open House in Lynn, Mass on January 31st with over 1,700 persons attending. This is what I would like to see every Division try during the next year. If you would like information on running one of these affairs please write to the Hub Division Secretary; William Parker, 65 Coweaset Drive, Brockton, Massachusetts, 02401.

The year 1971 will see us have our National Convention in London, and will also be the Northeastern Regions Twenty-Fifth Anniversary. In order that we might have appropriate ceremonies at our conventions, in London, and at Divisional Meets I have appointed your Vice President Graham Harvey as Chairman of the "NER 25th COMMITTEE". Graham as my Vice President is very busy aiding with the numerous details that go into running the Region, and this assignment is a natural extension of his activities. You will during the next few months be hearing of the plans and events which I hope will make our 25th a year to remember.

Happy Model Railroading.

*Dick*