

THE COUPLER



Official Bulletin of the Northeastern Region of the National Model Railroad Association

Two Cents a Week

An Editorial to All Non-NER Members of NMRA in the Region

What is 2 cents a week?

Among other things it is:

- The cost of getting weighed twice, or
- The cost of burning a 100-watt bulb for 6 minutes, or
- The cost of 2 sticks of chewing gum,
- The cost of driving around the block,
- The cost of one (1) cigarette, or
- The cost of membership in NER in 1966.

It is also the cost of belonging to NER in 1967!

Two cents a week for 50 weeks will buy you 365 days of model railroading fellowship. It will buy you 4 issues of The Coupler, it will give you the right to compete in Regional contests, it will enable you to vote for the Regional President who represents you as Trustee on the NMRA Board of Trustees, and it will hire you a President, Vice President, Treasurer, Secretary, Office Manager and 9 Directors for a year.

HOW IS THAT FOR VALUE? Is it worth giving up one cigarette a week for or, for non-smokers, to walk around the block once a week instead of driving the car? We think so. All you have to do to participate in the membership benefits above is clip the Application Coupon on Page 11, fill it in and mail it with the dollar (\$1.00) you will save by smoking one less cigarette a week to our Office Manager, Ken Hyslop, at 125 Lordship Rd. Stratford, Conn. 06497.

The purpose of this Editorial is obviously an effort to increase membership in our organization, the Northeastern Region (NER) of the National Model Railroad Association. It is directed to those members of the NMRA who reside in the geographical territory of the northeast—Continued on Page 11; see EDITORIAL

Glenn Wagner Named President-elect; Dick Towle, V.P.; Pete Gray New Sec'y. Harvey, Hyslop, Randall, Towle New Directors

The Annual Election Meeting of the Northeastern Region-NMRA was held at the Mohican Hotel, New London, Conn. Sunday morning, May 14, 1967. New Directors elected to the Board for the term of office indicated were as follows:

- Graham K. Harvey, Jr. 2 years
2473 S. Seaman's Neck Rd., Seaford, N.Y.
- W. Emerson Randall, Jr. 2 years
10 South St., Cranston, R.I.
- Richard E. Towle 2 years
P.O.Box 328, Manchester, Mass.
- Kenneth T. Hyslop 1 year
125 Lordship Rd., Stratford, Conn.

Sunrise Trail Div. to Host NER Garden City Hotel Ready for Regional Fall Convention on Sept. 22-24

Attendance Record Expected to be Broken

The Fall Convention and Annual Meeting of the Northeastern Region will be held at the Garden City Hotel, Garden City, New York on Sept. 22, 23 and 24, 1967. The program, details of which are being arranged by a Committee of Sunrise Trail Division members, is as follows:

FRIDAY NIGHT

- 5:00- 9:00 PM Registration Desk
- 5:00-11:00 PM Hospitality Room
- 9:00- PM Board of Directors Meet
- 8:00 until thrown out Club Visits.
- Note: The Committee will provide cars and/or guides for Club and home lay-out visits.
- 8:00- PM Slide show
- 8:00- PM Dealer Displays

SATURDAY ACTIVITIES

- 8:00-12:00 AM Registration Desk
- 9:00-12:00 AM Clinics as follows:
Cstenary by Walt Tattersall
First Trick at JO - 8 hours of PRR Passenger Terminal Operation by Ken Martin
Painting by Mike Pearsall
Color Photography by Dick Towle
- NOTE: Each Clinic will run twice at staggered intervals so any three can be seen.
- 8:00- AM Model Displays
- 8:00- AM Slide Contest Display
- NOTE: Relative to the above two items there will be two photo contests and two model contests. The 35 mm color Slide contest permits of two entries. These must be cardboard mounted with the member's name and NER number on them. Subject may be either proto-Continued on Page 2; see GARDEN CITY



(Rothberg Photo)
TRANSFER TABLE AT LIRR'S MORRIS PARK
SHOPS WILL BE A FEATURE OF FALL PANTRIP

236 at Spring Meet in New London

An enthusiastic group of 236 model railroaders met at the Mohican Hotel in New London, Conn. the weekend of May 12-14, 1967 for the Northeastern Region's 43rd biannual Convention. Blessed with reasonably fair weather throughout, the meet was a tremendously successful one from start to finish. Ken Hyslop and his committee of Old Timers: Clark Benson, Tom Hayes, Art Smith, Irwin Lloyd, Ralph Higgins, Russ Cox, and Edna Sullivan are to be commended for presenting the members with a Convention which was fully up to previously established high standards.

For the Friday night registrants there was Edna Sullivan's Hospitality Room and a continuous showing of railroad slides by Bruce Meulendyke. The Directors, as Continued on Page 12; see NEW LONDON

OFFICIAL REGION NOTICE

The next meeting of the Board of Directors of NER-NMRA will be held at 9:00 PM Friday, Sept. 22, 1967 at the Garden City Hotel in Garden City, New York.

* * * * *

The Annual Meeting of the Northeastern Region of the National Model Railroad Assn., Inc. will be held at 10:00 AM, Sunday, Sept. 24, 1967 at the Garden City Hotel, Garden City, New York.

The above Official Notices of Meetings are issued by President Jack Alexander and published in a prominent place in The Coupler in accordance with the Constitution and By-laws.

See Election Notice on Page 2

Glenn Wagner, Peter N. Hugger, and Earl Smallshaw continue on the Board for one more year, and Jack Alexander remains as the ex-Officio member. Going off are Dr. W. Roy F. Dohn, Mrs. Ann Hackett, John A. Young, and Donald Robinson, ex-Officio.

At the Board of Directors meeting immediately following the Election Meeting, Glenn Wagner of Delmar, N.Y. was named President-elect. Other Officers appointed were Richard E. Towle, Vice President, Mrs. Dorothy Hyslop, Treasurer, and Peter C. Gray, Secretary. With one exception, all of the newly elected Directors and Officer appointments will be—Continued on Page 2; see DIRECTORS

THE COUPLER

Published by the

NORTHEASTERN REGION of the
NATIONAL MODEL RAILROAD ASSN. INC.

EDITOR: L. Jeff French
270 Duncaster Road
Bloomfield, Conn. 06002

STAFF ARTIST: Mike Pearsall

NORTHEASTERN REGION OFFICERS

PRESIDENT: Jack Alexander
111 South Street
E. Bridgewater, Mass. 02333

V. PRESIDENT: Peter N. Hugger
812 Prospect Street
Westfield, N.J. 07090

SECRETARY: Peter C. Gray III
217 Floral La.
Wood-Ridge, N.J. 07075

TREASURER: Mrs. Dorothy Hyslop
125 Lordship Road
Stratford, Conn. 06497

OFFICE AND ADVERTISING MANAGER: Kenneth Hyslop
125 Lordship Road
Stratford, Conn. 06497

ACHIEVEMENT PROGRAM CHAIRMAN: Donald A. Clerke
132 Laurel St.
Wapping, Conn. 06087

MODEL CONTEST COMMITTEE CHAIRMAN: A. Thomas Prange
72-16 Fortyfourth Ave
Woodside, N.Y. 11377

MEMBERSHIP COMMITTEE CHAIRMAN: Dick and Andrea Towle
Loading Place Road
P.O. Box 328
Manchester, Mass. 01944

CONVENTION CHAIRMAN: Walter Syrett
Quarry Hill Drive
RD 2, Barre, Vt. 05641

NOMINATING COMMITTEE CHAIRMAN: Frank W. Skutsch
56 Commander Avenue
Garden City, N.Y. 11530

ESTATE COUNSELING CHAIRMAN: George McCauslin
105 Ocean Ave., Lock Arbor
Allenhurst, N.J. 07711

DIRECTORS OF THE NORTHEASTERN REGION

Jack Alexander #
111 South Street
East Bridgewater, Mass. 02333

Dr. W. Roy F. Dohn #
210 Champagne Drive
Baie D'Urfe, P.Q., Canada

Mrs. Anna Hackett #
33 Orient Ave
Arlington, Mass. 02174

Peter N. Hugger %
812 Prospect Street
Westfield, N.J. 07090

Donald S. Robinson *
408 Davis Street
Greenfield, Mass. 01301

Earl Smallshaw %
Long Hill Road
Middletown, Conn. 06457

Glenn A. Wagner %
P.O. Box 262
Dalmar, N.Y. 12054

John A. Young #
16 Colony Court
Keene, N.H. 03431

Key:

- * Ex-Officio Member-Past President
- # Term expires in 1967
- % Term expires in 1968

GARDEN CITY: Continued from Page 1
type or model. In order to be pre-judged they must be received by Frank Skutsch, 56 Commander Ave., Garden City, N.Y., 11530 NOT LATER THAN SEPT. FIRST. Enclose a 3x5 file card with your name, address, NER number and identifying information with EACH entry as this will serve as the entry blank. Also enclose a self addressed stamped label for returning the slides. One model contest will be the usual Region event, open to all modellers, and conducted under the Region's rules. As a result of the success of the contest at New London, there has been increasing interest in the event, and a large number of entries are expected in all categories. Make sure you are represented. The second contest is sponsored by Ira Rothberg and the host group, and is a special recognition directed to an award for any form of self-propelled equipment. This will be a wide open affair with trolleys, rail buses, interurbans, and possibly even the new high speed "Corridor" equipment being judged. (Hand cars are permitted.)

12:00-1:00 PM Lunch - A room will be reserved for us with a quick menu

1:00 -5:00 PM Fan Trip
This will run from Garden City to Garden City freight yard via freight only Salisbury Branch, thence via freight only old Hempstead line to Nassau Jct. (Mineola), thence via mainline and Montauk cutoff to Bliss Yards and ferry docks (Long Island City); thence to Dutch Kills Bridge and then either via the Montauk Branch or mainline to Morris Park yards and then via the mainline and Hempstead Branch to Garden City. There will be photo stops at Garden City freight yard, Bliss yards, and Dutch Kills Bridge. There is a one hour tour of Morris Park shops (including a gem of a transfer table).

Motive power is nominally a pair of RDC's with capacity limited to 1911. If pre-registration warrants we can use a diesel and coaches instead.

6:30- 7:30 PM Banquet
Note: Choice of sliced steak or turkey dinners; advanced notice (noon Saturday) necessary for choice.

7:30- 8:00 PM Awards
8:30- PM Auction
Bull sessions and privately arranged home visits after auction.

BUSINESS MEETING

10:00- AM Annual Business Meeting- see Special Notice on President's Call of Meeting.

Breakfast and Church on your own. Home pike visits by private arrangement. Informal meetings of Oddball groups.

SPECIAL LADIES EVENTS

For the wife who can't stand model or real railroads: there will be a guided tour of Teddy Roosevelt's home at Oyster Bay and a visit to a commercial meat freezing plant on Saturday. On Sunday, the ladies will visit the Old Westbury Gardens. Of course they will join Hubby at the banquet and help him with his bidding at the Auction.

THE BAD NEWS

Advance	REGISTRATION	At the Door
\$1.50	\$2.00	\$2.00
4.00	FAN TRIP	4.50
6.50	BANQUET	7.00
\$12.00	TOTAL	\$13.50

NOTES: Registration is per family, fan-trip and banquet, per person. Children under 10 can have a child's portion at half price.

HOTEL ROOMS: \$12.00 and up for singles
\$17.00 and up for twin

Continued on Next Column, Top

Suites are available; The hotel can arrange baby sitting if notified in advance

THE COMMITTEE

Ira D. Rothberg, Chairman; Frank Skutsch, Louis Kru, Graham Harvey, Fred Leger, Bal Abrams, Tom Prange, John Pollak, Bob Kirsh, Bob Miller, William Kelly, John MacIntosh, Harold Miller, Mrs. Joan Kelly, Robert Sewall, Ken Martin, James Clokey, Charles Vollmer, Pvt. Ralph Thomas, Norman Briskman, Robert Grooms, Sam Berliner, Lou Wozniak, John Boete, Rudy Morganfruh, Charles Goerz, John Osborne.

NOMINATING COMMITTEE NAMED

In accordance with Constitution Article IV, Sec. 6, By-laws Article I, Sec. 1 b i and Article III, Sec. 1, incoming President Glenn Wagner has, on June 29, 1967, appointed the following Nominating Committee for the year 1968. In accordance with Article III, Section 1, these appointments are announced herewith in the July, 1967 Coupler.

Area	Committeeman and Address
NEW YORK	Frank W. Skutsch, CHAIRMAN 93 Suffolk Lane Garden City, N.Y. 11530
CANADA	Dr. Darryl Townsend 5686 Queen Mary Rd. Montreal, Quebec
MASS., MAINE, N.H. and VT.	William MacIver 40 Brae Rd. North Weymouth, Mass. 02191
CONN. and RHODE ISLAND	Jeff French 270 Duncaster Rd. Bloomfield, Conn. 06002
NEW JERSEY	Al Westerrfield 13 Carolyn Terrace Roselle, New Jersey 07203

The above-named members have accepted the appointments.

Nominating Committee Procedure Statement on Page 8

THE COUPLER OFFICIAL NOTICE

Deadline for submitting material for the October COUPLER is Sept. 29th

ELECTION NOTICE

SPECIAL ELECTION NOTICE

In accordance with the recently adopted By-laws it will be necessary to hold a Special Election at our Annual Meeting in Garden City, N.Y. on Sept. 24, 1967 to fill the two (2) newly created vacancies on our Board of Directors.

This being an ODD-YEAR election the two new Directors will be elected on an area basis, one from New Jersey and one from Canada, since at our spring Election Meeting the Directors elected represented the other 3 election areas.

The Nominating Committee will prepare a slate of Candidates to be voted on in accordance with By-laws Article V, Section 7. Per: Jack Alexander, Pres.

DIRECTORS: Continued from Page 1

come effective at the Annual Meeting in Garden City, N.Y. on Sept. 24, 1967. The one exception is Peter Gray who was confirmed as Secretary by the BOD at its meeting May 12, 1967 to fill the unexpired term created by the resignation of Paul Hackett.

DISPATCHER'S TOWER

It is with mixed emotions that I write this, my last column as President of NER: feelings of both regret and of joy; of satisfaction and of dismay.

There are regrets on my part that we have not been able to induce more of the 2500 National members within our borders to join us in the fellowship of model railroading, for this has been one of the great rewards of my past 17 years in the NMRA. Had I merely sent in my National dues and played the lone wolf in the basement, I would have been the great loser. This is a grand hobby not just because there are so many facets to interest one, but equally because there are so many fine people willing to help one another in a common goal. In many other hobbies we find the members jealously guarding their methods of success and accomplishment. Not so in our hobby. We are a great fraternity, willing to share our time, our talent, yes even our tribulations. Why not join the Region and enjoy the rewards! It's only a buck.

There's a satisfaction in seeing a new harmony among the various Divisions as a result of the new Constitution and By-law changes which assure a geographical diversity on our Board of Directors.

Yes, there is also dismay, for every now and then a notice comes to me that someone's model railroad equipment has been stolen or some prototype railroad property appropriated by a model railroader. Much pleasure is derived from displaying our railroad possessions but who can take comfort in the showing of ill-gotten gains. Let's not bring discredit on our hobbyists as a group by such thoughtless and reprehensible acts

A continuing source of enjoyment has been the genuine spirit of cooperation from all those who have willingly assisted me in serving you over the past two years. I'm sure that our next President, Glenn Wagner, will find the same spirit of cooperation.

See you all in Garden City,
JACK ALEXANDER, Pres.

FROM THE OFFICE MANAGER KEN HYSLOP

Membership as of June 30, 1967... 932

Twenty-eight members dropped out from the March expirations, did not renew for some reason. The first of June there were 391 expiration notices mailed out and to date about 130 have been returned. The Advertising Manager job is still open as far as I know since I have had no report from the BOD on any appointment of the two names forwarded to them from this office. For the first half of this year we have mailed out about 4,700 pieces of mail: convention notices, Coupler issues, membership expirations and renewal membership cards. The office never shuts down for vacation, is always open to receive your dues, advertising, complaints and what have you.

We have often wondered if this column was read but we received our reward with the issue #78 of the May 67 Coupler. Our writings were an inspiration to one Stanley Decker who started his open letter to the NER membership by so stating that he was inspired by our comments.

Cont'd. on Next Column, Top

Continued from Column 1

Now, if after reading his nice long letter, I could understand whatever I wrote to cause such inspiration, I would be pleased to write on other subjects to inspire others to write more and oftener. I trust that fellow member Decker will see fit to again write his comments. Good, bad or indifferent, comments are the best thing the Region can get as these are guidelines a good BOD will look for in conducting out business.

While we were doing business at the same old stand, we found time to conduct the Spring Convention which we considered was one of the best. This being based upon the comments of the fellows who were at the Convention. Our package price enabled us to have the use of the entire upper terrace of the Hotel for the three days of the convention, an average cost of \$ 6.00 per person which included two meals, free Hospitality room, hors d'ouevres at the cocktail hour. Where else can you get so much for so little and still come out with a profit which helps to pay part of the past convention cost and the permanent convention committee's expenses.

Model Contest Results by TOM PRANGE

There were a total of 31 entries at the model contest in New London. While this might not seem like a large number of entries for a Region as large as ours, it represents a good and healthy increase over the number of entries in previous contests

The New London Contest was the first one conducted under the new rules approved by the BOD in January, 1967. They are very close to the National rules, and will make it much easier for those who have won a Third Prize or better in the NER meet to qualify for a Merit Award toward an Achievement Certificate. Please note that these will be automatically issued to the Winners.

A word about the point system we use: There are a total of 125 points in the various sections. To win a prize, one must earn the following points:

First Prize	100 Points (80%)
Second Prize	93.75 (75%)
Third Prize	87.5 (70%)
Honorable Mention	75.0 (60%)

A Third Prize automatically qualifies the entrant for a Merit Award.

The following are the winners: (More than one prize in a category means that the entrant earned the minimum points as outlined above.)

CRAFTSMAN:

Motive Power - Steam	
Norman Briskman	1st Prize
Motive Power - Other	
Al Kalbfleisch	2nd
Freight Cars	
Norman Briskman	1st
Graham Harvey	3rd
Graham Harvey	3rd
Non-Revenue Cars	
Frank Skutsch	Hon. Men.
Structures	
John Klotz	1st
Kenneth Martin	1st
John Pollak	1st
John Konrad	3rd
Norman Briskman	3rd
Robert Van Cleef	Hon. Men.
Jeff French	Hon. Men.

MASTER

Motive Power - Steam	
Harold Horner	1st
Structures	
Eugene Wolfe	1st

Continued on Column 3

Cont'd from Column 2

Dioramas	
David Newcomb	1st

HUB RUNNER-UP TROPHY:

Norman Briskman - Craftsman
Freight Cars

DELAWARE TROPHY: Best in Show

Eugene Wolfe - Master-Structures

We hope the outcome will encourage others to enter the contest at Garden City - especially those of you in the Craftsman Category (those who have note won a 1st prize before in the same category.)

Finally, thanks to the judges, who gave up the Fan Trip on Saturday afternoon to judge the contest:

Walter Olevsky
Earl Smallshaw
Kenneth Martin

See you in Garden City! Remember, you can enter by proxy!!!!!!

Tom Prange
Permanent Model Contest Chairman



Photos by J. French
TOP: TOM PRANGE AWARDS DELAWARE TROPHY TO GENE WOLFE
MIDDLE: AWARD WINNING COALING STAGE
BOTTOM: BILL MACIVER PRESENTS HUB RUNNER-UP AWARD TO NORM BRISKMAN

ACHIEVEMENT PROGRAM

by/ DON CLERKE



With the summer months upon us, thoughts of model railroading activity lapse into thoughts of water skiing, golf and camping. However, if your basement is like mine, it is the coolest place to be on a hot muggy day and is the next best thing to cooling off in a lake or the ocean.

I would like to take this opportunity to thank everyone for their interest in the Achievement Program during the past year for I feel it was a successful one. I have already received some applications for Achievement certificates since the New London convention, but I feel more people must be qualified in the model categories now that the convention model contest has produced some more winners. So if you are eligible, I will be looking for your applications.

This month I am going to discuss Certificate Number 6, Model Railroad Engineer - Electrical. This is probably one of the more difficult awards to achieve since there are many, many solder joints to make and many feet of wire to string. However, let's face it, what good is a model railroad if it doesn't operate, and how it operates can make the difference between pleasure and aggravation. I feel that by fulfilling the requirements of this certificate, the electrical system can be more trouble free, easier to maintain and easier to operate since the electrical system will be designed with some prior thought rather than just running wires here and there.

The first requirement is that you must construct or supervise construction of an electrical control system and show that it works by demonstrating its operation. It must have certain requirements, most of which would be found on the average model pike such as passing sidings, five blocks, turning facilities, and storage facilities. This requirement further states that the system must consist of a power supply and sufficient devices for controlling direction, speed, overload protection, and include the necessary track circuitry to operate more than one train at a time. The choice of this system is up to you provided it works. You don't have to be an electrical wizard to get through this part, or any part for that matter.

In addition to this you must wire and demonstrate the satisfactory operation of at least three of the trackwork configurations listed in the regulations. These include turnouts, crossings, crossovers and other examples of special trackwork. I would like to point out that these examples may be commercial trackwork components and do not have to be scratchbuilt as they did in the Civil Engineering requirements.

The next section (c) gives you a choice of completing three of nine electrical systems which must include such things as train detection, turnout indication, high frequency lighting, etc.

In order to document the electrical system, a schematic drawing should be made to show your particular system including such things as the power supply, rail gaps, feeders, and all that goes into the electrical portion of the model railroad. Filling out the application and submitting it to me with the proper documentation will result in a certificate in the Electrical Engineering category.

The recent revisions incorporated in the November 1966 regulations gives the modeller more latitude without compromising the standards and is therefore more suited for your particular system. If you are a person that is not familiar with the various electrical schemes, I suggest that you get a book at your local hobby shop not only to fulfill the requirements of the certificate but to have a model railroad that is as trouble free as possible electrically. (ED NOTE: You will also find that prior recipients of this award have pledged themselves to help other modellers slay their electrical demons, and a review of the NMRA Data Sheets on Electricity will also prove helpful.)

In the past six months there has been considerable interest on the Divisional level relative to the Division's role in the achievement program. Because of this and the fact that the NMRA Board of Directors will have acted on a proposal relative to the Divisions in this activity, I will report on this subject in the next Coupler and continue the certificate explanations in the following issue.

I would like to take this opportunity to wish everyone a pleasant and enjoyable summer and hope that sunburn and similar summer perils will not interfere with your model railroading.

WELCOME

The following new members have joined us since the May issue of The Coupler was published:

CANADA

D. W. Kenny, Sr.
2770 Van Horne Ave., No. 1
Montreal, Quebec

CONNECTICUT

Donald J. Cutler, Sr.
RPD #3, Woodstock

Dominic Felicisano
528 Bank St., New London 06320

Bill Frackelton
Chestnut Hill Rd., Killingworth

Malcolm C. Getz
269 Green Manor Terr., Windsor Locks
06096

Barry Mellitz
44 Oxford St., Bridgeport

Edward Russell
590 Orange Center Rd., Orange

MASSACHUSETTS

Aaron Abend
1 Michaud Dr., Framingham 01701

R. H. Anthony
419 Plymouth St., Holbrook 02343

Robert Browne
10 Rocky Hill Rd., Burlington 01803

Ralph R. Conard
25 Rich Valley Rd., Wayland 01778
Cont'd. on Next Column; see WELCOME

WELCOME: Cont'd from Column 2

Albert Derby
62 Hendrick St., Easthampton

Kevin Kraszeski
P.O. Box 588, Stockbridge 01262

Rita D. LaLine
11 Rock Ave., Swampscott 01907

William Litant
3 Douglas Rd., Lexington 02173

Ken Martindale
11 Russell St., Worcester 01609

Richard R. McLaughlin
79 Broadview Terr., Pittsfield 01201

Emily Sherman
24 Juniper Ave., Wakefield

Walter Sherman
24 Juniper Ave., Wakefield

Herbert Smith
210 Essex St., Boston 02111

Roger Stoker
28 Concord Rd., Waltham

NEW HAMPSHIRE

Lawrence K. Farnsworth
RPD #1 Box 220, Greenland 03840

NEW JERSEY

James Garton
40 Exeter Dr., Berkeley Hts.

Steven Herwan
3 Lancaster Rd., Burlington 08016

Richard Jurgens
2666 Skytop Dr., Scotch Plains 07076

Thomas J. Kearney
64 Trenton Ave., Paterson 07513

James Keller
203 Sears Ave., Atlantic Highlands 07716

Bernard C. Lustig
17 Silzer Ave., Iselin 08830

Steven Mallery
94 Oakwood Dr., Murray Hill

Stanley R. Petroski
34 Oxford St., Apt. L-13, Newark 07015

Robert E. Pollard
8 Pine La., Weyside, Asbury Park 07712

NEW YORK

Peter Abrams
154-04 58th Rd., Flushing 11355

Carl A. Detwyler
Box 182, Bullville 10915

James Driscoll
760 - 67th St., Brooklyn 11220

Donald R. Eichorn
41 Fulton Ave., Smithtown 11787

Charles W. Geerz
483 Rhodes Lane, West Hempstead 11552

Leo E. Kane
440 W. 24th St., Apt. 17E, N.Y.C. 10011

Robert Mellina
23 State St., Valley Stream 11580

William C. St. John
2219 16th St., Troy 12180

Alvaro A.J. Salinero
3810 Broadway, New York City 10032

George L. Trigg
12 Circuit Rd., Bellport 11713

Continued on Page 9; see WELCOME

CONSTITUTION & BY-LAWS

(Note: All of the material and content of the Constitution and By-Laws that is printed below has been approved by the membership at previous meetings. The only new material that has been inserted is to conform Articles and Sections that have been made invalid by newly approved and adopted Articles and Sections.

Changes approved by the members at the May 14, 1967 Election Meeting in New London are italicized. Where an entire new section has been added, only the word "section" appears in italics.

CONSTITUTION

Article I: Name and Purpose.

Section 1 - This organization shall be known as the Northeastern Region of the National Model Railroad Association, Inc., and is established under the provisions of the Constitution of the National Model Railroad Association, Inc.

Section 2 - The purposes of the Northeastern Region of the National Model Railroad Association are:

- Furtherance of the objects of the National Model Railroad Association, as set forth in the Constitution of said Association.
- Furtherance of the hobby of model railroading in the territory comprising the Northeastern Region.
- Promotion of closer social activities among the members of the National Model Railroad Association and of the Northeastern Region.

Article II: Membership

Section 1 - Any person who is a member of the National Model Railroad Association is eligible for membership in the Northeastern Region.

Section 2 - Application for membership accompanied by proof of membership in the National Model Railroad Association and the sum of one dollar, shall entitle such person to membership in the Northeastern Region.

Section 3 - Life membership in the Northeastern Region is available to any paid-up Life Member of the National Model Railroad Association upon the lump sum payment of \$20.00

Section 4 - The Board of Directors may, at their discretion, elect honorary members. These Honorary Members shall not have a vote nor shall they pay dues.

Section 5 - The Board of Directors may, at their discretion, make gift memberships to worthy indigent individuals or groups. These individuals or groups shall receive The Coupler, but shall have no vote and shall not be required to pay dues, and the membership shall be for a period of one year at a time.

Article III: Meetings.

Section 1 - There shall be at least one Annual Meeting of the Northeastern Region to be held in September or October of each year, and an Election Meeting may be held in May or June of each year if needed to break a tie in the election of

Directors by the Mail Ballot, the exact dates of such meetings to be fixed by the Board of Directors. At such Annual Meeting there shall be transacted all regular business of the Region except the nomination and election of Directors. At the Election Meeting the members present, in person or by proxy, shall vote to break any tie in the election of Directors by the Mail Ballot. Other routine business of the Region may be transacted.

Section 2 - Upon its own motion or upon petition of 25 members of the Region directed to it, the Board of Directors shall call additional or Special Meetings as may appear necessary.

Section 3 - Social Meetings, to be known as Conventions, may be held twice a year; in conjunction with the Annual Meeting or Election Meeting or separately.

Section 4 - At the Annual Meeting, at the Election Meeting or at any Additional or Special Meeting, 25 members shall constitute a quorum.

Section 5 - The Annual Meeting and Election Meeting of the Northeastern Region shall not be held in two consecutive years in the same geographical portion of the Region unless there is no invitation from any other portion of the Region.

Article IV: Officers and Committees.

Section 1

a. The management of the Northeastern Region shall be vested in a Board of Directors consisting of nine members elected as hereinafter provided and one ex-officio member.

b. Five members shall constitute a quorum of the Board of Directors.

c. The members of the Board of Directors shall be elected as provided in the By-Laws and shall hold office as provided in the By-Laws or until their successors shall be elected and take office.

d. Immediately upon receipt of the election results from the Ballot Committee, unless there be a tie to be broken, the Northeastern Region President shall arrange for the newly elected and continuing members of the Board of Directors to meet and organize by electing a President and a Vice-President, who must be members of the Board of Directors; also a Secretary, a Treasurer, and an Office Manager who may or may not be members of the Board of Directors, but must be members of the Region. The Secretary and Treasurer may be one and the same person. The President shall announce the results and have the results published in the earliest possible issue of THE COUPLER.

e. Should an Election Meeting be necessary, the Organization Meeting of the Board of Directors shall be immediately after the Election Meeting.

f. The term or office of the President, Vice-President, Secretary Treasurer and Officer Manager, shall be one year, or until their successors are elected and take office; And shall commence at the end of the Annual Meeting following election.

g. Any vacancy occurring in any of the offices named in the preceding paragraph may be filled at a special meeting of the Board of Directors called for that purpose.

h. The retiring President shall continue a member of the Board of Directors, without further election to it, until the current President in turn becomes Past President.

Section 2 - The duties of the Officers of the Northeastern Region shall be those commonly associated with such offices in general business usage, as further defined in the By-Laws.

Section 3 - The Board of Directors shall hold legal title to all property and monies of the Northeastern Region, in trust for its members.

Section 4 - The Convention Committee shall consist of seven (7) members with overlapping terms of two years, subject to reappointment.

Section 5 - The Chairman of the Convention Committee shall be appointed by the President, the other members of the Committee shall be nominated by the Chairman and appointed by the President.

Section 6 - The Nominating Committee shall consist of five members appointed by the President.

Section 7 - The Ballot Committee shall consist of three members appointed by the President.

Section 8 - An Office Manager shall be appointed annually by the Board of Directors.

Section 9 - A Regional Publicity Director shall be appointed by the President.

Section 10 - The Board of Directors may charter Divisions as sub-Regional organizations within the Northeastern Region of the NMRA and shall specify the bounds of their privileges and responsibilities.

Article V: Publications.

Section 1 - There shall be established an official publication of the Northeastern Region, to be known as The Coupler, which shall be issued at least four times per year.

Section 2 - Publication of THE COUPLER shall be in charge of an Editor appointed by the President. The Editor of THE COUPLER shall serve without salary and shall be exempt from the payment of dues.

Section 3 - The Convention Manual shall be an official publication of the Region.

Section 4 - The Convention Manual shall be compiled by the Convention Committee and approved by the Board of Directors.

BY-LAWS

Article I - Duties of Officers.

Section 1 - The President shall perform the usual duties of a President.

- He shall preside at all meetings.
- He shall appoint committees as he sees fit, in addition to the following:
 - A Nominating Committee.
 - A Ballot Committee.
 - A Convention Committee.

Continued on Page 6, See BY-LAWS

BY-LAWS, Continued from Page 5.

iv. A Publicity Director.

v. An Auditor, preferably with accounting experience.

c. In accordance with the Constitution of the National Model Railroad Association he is a member of the Board of Trustees of that Organization and shall represent the Northeastern Region at the meetings of that Board. If unable to attend a meeting of that Board he shall appoint a proxy in accordance with the Constitution of the National Model Railroad Association.

d. The President may make awards, to be known as "President's Awards", to persons whom he feels have been outstanding in their service to the Region. The number of such awards shall be limited to three in each year unless otherwise authorized by the Board of Directors. With approval of the Board of Directors, the cost of such awards shall be borne by the Region.

Section 2 - The Vice-President shall be aide and assistant to the President in any way possible and shall assume the office of the President in his absence, or at his written request, or in the event of his death. He shall be in charge of membership promotion.

Section 3 - The Secretary shall keep the records of all meetings of the organization. He shall file the required annual corporation report with the Secretary of the State of New Jersey. The Secretary shall serve without salary and shall be exempt from the payment of dues.

Section 4 - The Treasurer shall keep a record of all funds received and of all funds paid out by the Region. His books shall be balanced as of the date of the Annual Meeting, and he shall render a report at the Annual Meeting. The Treasurer shall serve without salary and shall be exempt from the payment of dues.

Section 5 - The books of the Treasurer shall be audited at least once a year by an Auditor appointed by the President.

Section 6 - The Office Manager shall keep a roster of the members of the Region and shall have the duty of advising a member when his membership is about to expire. It shall be his further duty to advise a delinquent member of his status. The Office Manager shall make all regular and special mailings to the membership, of The Coupler and such other mailings as the Board of Directors shall direct. He shall have charge of maintaining the supplies of the Region. He shall record renewals and new members, and shall transmit all funds received to the Treasurer with a record of the type of income. The Office Manager shall be exempt from the payment of dues. The Office Manager may receive a salary of 10% of the dues received from the members in excess of a membership in the Region of 500 persons, as determined by the Board of Directors at their meeting following the Annual Meeting.

Article II: Convention Committee.

Section 1 - The Chairman of the Convention Committee shall report to all meetings of the Board of Directors for their approval of his activities.

Section 2 - The Convention Committee shall have full charge of the location, planning and running of all Northeastern Region Conventions.

Section 3 - The Convention Committee shall appoint and direct local committeemen, as necessary, for local work at each Convention. Appointment

shall be made with the approval of the Board of Directors. Direction of the local committeemen shall be by the Convention Committee and/or by a designated Convention Committee member.

Article III: Nominating Committee.

Section 1 - Within thirty days after the Spring Convention, but not later than June 30, the Incoming Region President-elect shall appoint a Nominating Committee for the following year's election. The committee shall consist of five members, one being from each of the Election Areas and not more than one of these shall be from the Board of Directors. The President shall appoint one of the five as Chairman. The President shall see that announcement of these appointments is in the next issue of THE COUPLER, (July) following the Convention.

Section 2 - Immediately following appointment, the Chairman of the Nominating Committee shall prepare a statement for the next issue of THE COUPLER (July or October, or both). This statement shall inform the membership of the vacancies to be voted on the following year, the member of the Committee to be contacted in each Area, the method to be followed in presenting nominations to the Committee, and the dead-line date for the nominations.

Section 3 - Nominations may be presented to the Committee by any group, Division, or individual, but they must be members of Northeastern Region. A nomination should be sent to the Committee member for that nominee's Election Area, and must be accompanied by a brief description of the nominee's qualifications, and a signed statement by the nominee of his willingness to serve if elected.

Section 4 - The Nominating Committee may also solicit candidates in any Area, obtaining the same background information and signed statement as above.

Section 5

- By either or both of the above methods, the Nominating Committee shall formulate a slate of at least one, if possible more, candidates for each vacancy.
- On the odd-numbered years, this shall mean at least ten, if possible, candidates, two from each Area.
- On the even-numbered years, this shall mean at least eight, if possible, candidates but no more than two from any one Area.

Section 6

- To insure a Nominee's inclusion on the Ballot, in odd-numbered years any Northeastern Region member may present a "petition" to the aforementioned Nominating Committee member, prior to the deadline date for nominations. Said petition shall be endorsed by three additional Northeastern Region members of the same Election Area and include a statement signed by the nominee, of his willingness to serve if elected.
- The words "by petition" shall appear on the Ballot after the name, rather than the endorsement of the Nominating Committee unless the nominee is also the selection of said Committee.
- In even-numbered years additional nominations may be made as provided

in Subsections a and b, above, but no more than two members from the same Election Area may be elected to the Board of Directors. The two nominees from a given Area receiving the largest number of votes shall be declared elected, and any additional nominees from the same Area shall be declared ineligible and be passed over.

Section 7 - The Chairman shall so organize his Committee that the above slates are completed and publication in the February issue of THE COUPLER is assured. A copy of the slate furnished to the Region President by the Nominating Committee Chairman. The names of the candidates shall be listed on the Ballot in the order the names were received by the Nominating Committee.

Section 8 - The Nominating Committee's duties shall be considered complete upon publication of the Ballot.

Article IV: Ballot Committee.

Section 1 - The President shall appoint a three member Ballot Committee, preferably in the same local area to facilitate close cooperation, designating one member as Chairman. The Office Manager may serve on the Ballot Committee, but no other officer nor any nominee may serve on the Committee.

Section 2 - The Ballot Committee Chairman shall be the one to whom all Ballots are mailed. He shall check the name of the voter against the membership list, then obliterate the name and address except for the state (the Area).

Section 3 - Promptly after the Ballot deadline has expired, the Ballot Committee shall meet, open, and count the Ballots.

Section 4 - The tabulated results of the election shall be prepared by the Ballot Committee Chairman, and certified by the other two members of the Ballot Committee. Copies of this tabulation shall be sent immediately to THE COUPLER Editor to be published in the May issue, also to the President, current Directors, and to all nominees appearing on the Ballot.

Section 5 - All Ballots received shall be packaged and forwarded to the President, who shall retain possession of them until those elected have taken office. Ballots shall then be destroyed.

Section 6 - With the notification to THE COUPLER Editor, the President, Directors and candidates of the balloting results and the delivery of the Ballots to the President, the duties of the Ballot Committee shall be considered completed unless there be a tie to be broken, when By-Laws Article V, Section 5, shall apply.

Article V: Elections.

Section 1 - For the purpose of nominations and elections the Northeastern Region will be divided into five Election Areas according to State Line Boundaries:

- New Jersey
- New York State
- Rhode Island and Connecticut
- Massachusetts, New Hampshire, Vermont, and Maine
- Canada

Section 2 - The Board of Directors shall consist of nine members, elected for a two year term: five to be elected by Area in the odd-numbered years, and four to be elected "at large" in the even-numbered years.

By-Laws - continued.

Section 3 — Balloting shall be by Mail Ballot sent to all paid up Northeastern Region members only, as evidenced by THE COUPLER mailing list.

Section 4

a. The Ballot shall be one page of the February COUPLER and the reverse side of the Ballot shall contain the background information on the nominees. The face of the Ballot shall contain all necessary information for voting and mailing to the Ballot Committee Chairman (Name and Address), and the deadline date for receipt of Ballots. If necessary, the Ballot may be mailed separately.

b.

i. In odd numbered years members of the Northeastern Region shall vote only for the nominees for their own Area. The nominee for each Area receiving the largest number of votes shall be declared elected to represent that Area.

ii. On even-numbered years all members shall vote for not more than four of all of the nominees. The four nominees receiving the largest number of votes shall be declared elected, regardless of their Areas of residence. (Subject to Art. III, Sec. 6c.)

Section 5

a. In the event of a tie vote between two nominees for the same Area, or for the fourth position in even-numbered years, it shall be so published in the May COUPLER and a vote taken at an Election Meeting at the Spring Convention among those present, in person or by proxy, to break the tie.

b. The Election Meeting shall be conducted by the Ballot Committee, who shall be responsible for the distribution, collection, and counting of the Ballots. The results shall be tabulated and certified, and the tabulation sent immediately to THE COUPLER Editor for publication in the July issue, also to the President, current Directors and to all nominees involved. If another tie results, the President, who shall not yet have voted, shall cast the deciding vote.

Section 6

The term of office of the members of the Board of Directors elected as hereinabove shall begin at the end of the subsequent Annual Meeting, except for the Organization Meeting provided for in the Constitution, and shall terminate at the end of their terms of office, as hereinabove provided, or when their successors shall have been elected and have taken office.

Section 7 — Vacancies on the Board of Directors, by death or resignation, extending beyond the next Annual Meeting shall be filled at that meeting, by nomination by the Nominating Committee or from the floor and by vote of those present in person or by proxy; or at the preceding Election; by the election of one or more members to the Board for a term of one year. Should the vacancy be that of an Area representative, the replacement shall also be from that same Area.

Section 8 — Members of the Region, in good standing, may vote at the Annual Meeting or at the Election Meeting by proxy in the person of another member in good standing, and possession of a paid-up membership card of the absent member by the proxy shall be the evidence required of the proxy's right to vote in place of the absent member.

Section 9 — If any member of the Board of Directors fails to attend three successive meetings of the Board without submitting acceptable reason(s) for the absences to the Board of Directors; the Board, in regular meeting, may declare his office vacant and appoint a member of the Region in good standing to serve in his place until the next Annual or Election meeting, when the vacancy shall be filled as provided for in the case of resignation.

Article VI: Definitions of Meetings:

Section 1 - Annual Meeting: Defined in Article III, Section 1, of the Constitution of the Northeastern Region of the NMRA.

Section 2 - Election Meeting: Defined in Article III, Section 1, of the Constitution of the Northeastern Region of the NMRA.

Section 3 - Convention: A social meeting for the furtherance of the hobby of model railroading and for the promotion of closer social activities among members of the National Model Railroad Association and of the Northeastern Region thereof. Sightseeing trips and observation of prototype railroad activities may be included in the program. Conventions may be held in association with Annual Meetings, Election Meetings, Additional Meetings or Special Meetings, but no business of the Region may be transacted during the Convention except at such Annual, Election, Additional or Special Meeting, or at a Board of Directors Meeting; due notice of the meeting having been published as hereinafter provided.

Section 4 - Additional Meeting: Any meeting other than the Annual Meeting, the Election Meeting, a Special Meeting or a Convention. Such meeting shall be called by the Board of Directors, with due notice as provided hereinafter, and at such Additional Meeting business of the Region may be transacted.

Section 5 - Special Meeting: Any meeting called by the Board of Directors for the consideration of particular or special business. Only such particular or special business may be considered at such Special Meeting as was mentioned in the notice of such Special Meeting.

Section 6 - Board of Directors Meeting: Any meeting, for Directors, called by the President, or by the Secretary upon application by three or more Directors. At such meeting, routine business of the Region may be transacted; and policy and special matters may be considered, discussed, and prepared for presentation to the membership at large or for immediate action by the Board of Directors.

Section 7 - Notice of Annual Meeting, of the Election Meeting, or of Additional Meetings shall be mailed by the Secretary or by the Office Manager to the members of the Region at least thirty (30) days before the date of such meeting or shall be published in a prominent place in the issue of The Coupler preceding the meeting.

Section 8 - Notice of a Special Meeting shall be mailed to the members of the Region at least fifteen (15) days before the date of such meeting, or shall be published in a prominent place in the issue of The Coupler preceding the meeting.

Section 9 - Notice of a Board of Directors meeting shall be mailed, by the Secretary or by the President, to the Directors at least fifteen (15) days before the date of such meeting. Valid business may be transacted at such a meeting if a waiver of notice is signed by all, or all but one, of the Directors, should such a notice have been omitted.

Section 10 — Failure of a notice to appear in THE COUPLER shall not invalidate any action under this Constitution or By-Laws, provided that the Board of Directors send out an equivalent notice to the membership by first class mail not less than 15 days before the meeting or deadline to which the notice pertains.

Section 11 — Late mailing of THE COUPLER shall not invalidate a notice provided that mailings less than 30 days before the meeting or deadline involved shall be by first class mail.

Section 12 - At a Board of Directors meeting, only the votes of the Directors shall be counted though other members of the Region may attend and participate in discussion and may render reports and offer suggestions. Non-members may be invited by the Directors for good reason.

Article VII: Amendments.

Section 1 - Amendment of this Constitution and By-Laws must be made at the Annual Meeting, at the Election meeting, or at a Special Meeting called for that purpose; but any proposed amendment shall be submitted to the members of the Region with the notice of the meeting called therefore at least thirty (30) days before the date fixed for such meeting, or it shall be submitted to the members by publication in a prominent position in the preceding issue of The Coupler, or it shall be submitted to the Annual, Election, Additional or Special Meeting held at least thirty (30) days prior to the meeting at which the amendment is to be adopted, and the notice for such prior meeting shall state that amending the Constitution and By-Laws is to be considered at that prior meeting.

Section 2 - Any notice to a member required under this Constitution and By-Laws shall be deemed sufficient if sent post paid in a letter, on a post card, or in a prominent place in a copy of The Coupler to the last address given to the Office Manager by said member.

"THERE'S ONE IN EVERY CROWD"

"The NEVER-FINISHER" BEGINS AT LEAST FIVE KITS A WEEK BUT NEVER FINISHES ANY OF THEM. HE HAS STARTED A LAYOUT BUT HE WENT ON TO BUILDING TRACKWORK AND SCENERY BEFORE THE BENCHWORK WAS COMPLETED. THE TRACKWORK AND SCENERY WAS NEVER FINISHED, EITHER. RIGHT NOW HE IS WONDERING WHAT HE WILL START NEXT.



letters to the editor

L. Jeff French June 11, 1967
Editor, NMRA-NER COUPLER

Dear Editor:

Somehow the rumor has gotten out that the "O" gauge Newark Model Railroad Club has folded up or is in the process of folding up. Evidence of this has been found in contacts with local model railroaders, at hobby shops, and in the mail. How this rumor ever got started is unknown to us, but two sources are quite possible. Such could have originated by the fact that we have not been able to run a public exhibition since May 1965 and have moved away from the familiar location; or from a few disgruntled past members. It seems that all it takes to give a Club a shady reputation is one dissatisfied statement from an individual who found that he could not get along with the gang.

These rumors are emphatically false. Whoever started them and whoever spreads same are guilty of slander if not malicious gossip. All that any interested person has to do to ascertain that the Newark Club is very much alive, kicking and expecting to be so for as long as the Landlord renews the lease, is to come over and see for himself, any Friday evening.

The Club now numbers 11 regular and 5 associate members, and has not the vaguest intention of "folding up". We are always looking for new members to help us build our new 35 x 100 foot layout. All Clubs are always looking for new members.

Any help that you can give us in the pages of THE COUPLER to kill this rumor would be sincerely appreciated. We plan to have an "open house" this Fall with things displayed "as is", and to present a public exhibition, the first in the new quarters, upon completion of the mainline in April, 1968.

Queries about the Club should be addressed to me and not to any rumor spreaders with personal emotional grudges.

Signed: Paul B. Boivin, Jr.,
Sec'y-Treas. Newark Model
Railroad Club, Inc.

Non-member Likes COUPLER

Noroton Hgts., Co
Noroton Hgts., Conn.
25 April, 1967

Dear Mr. French:

First of all let me say I am not a member of the NMRA-NER but I do have a chance to read the "Coupler". The letter to you from Mr. Decker prompted me to write to you.

As an outsider I want to say I enjoy reading the "Coupler". Having a traction interest I enjoy Jerry's (Lawlor) articles. I can remember him chasing the cars around New Haven and being on the last car in that city.

I have never joined the NMRA for a couple of reasons. Mr. Decker stated the NER might pick up new members if they did not have to join the NMRA. This would be true on my part.

As for your group having two big get-togethers per year I myself think it is very good. If a person could not make one he could make the other.

I myself enjoyed operating at the Stamford Model RR Club a few years back when the NER held a meeting in that city. The next day I enjoyed myself on the fantrip the NER ran.

Continued on Page 9; see LETTERS

NOMINATING PROCEDURE for '68 ELECTIONS by F. Skutsch, Chm.

In accordance with By-laws Article III, Section 2, Nominating Committee Chairman Frank W. Skutsch has issued the following statement for publication in the July Coupler:

Under the amendments to the By-laws pertaining to nominations, I am here going to try to formulate the steps to implement what the membership wished to have done.

As voted upon, there will be nominations both by our nominating committee and by petition. I feel that we would not wish to either place too much pressure on the Editor of the Coupler nor to have to resort to a separate mailing of the ballot, and therefore am asking that nominations by petition be sent to the member of the committee for your area as soon as possible. I feel that these petitions may be secured any time after a prior election, and therefore feel that they may be sent in any time after you read this, but before 12/31/67.

Petitions must have the signature of at least five members of the Northeastern Region, and both the NMRA and NER membership number of the Signatories must be noted. If the petition is by a recognized group, such as a Division or Club, the signature of the Secretary, stating that at least five members of the group who are NER members wish the potential nominee nominated, will be sufficient, as under Robert's Rules of Order. In addition, and this is of utmost importance, there must be a signed statement by the proposed candidate, that he is willing to serve if elected, and a short biographical sketch of the candidate including, at a minimum, his age, length of time in NER and in NMRA, occupation, marital status and children if any, offices held in any organization both in model railroading and out, and any work he has done in clubs, NER, NMRA, etc.

This year, as we stated, petitions will be accepted from the time you read this. True, the most recently elected members of the Board have yet to take their seats, and this may seem premature, but I feel it will make things easier for all concerned if the petitions are received quickly. We do, however, ask that any candidate, if he feels prior to 12/31/67, that he wishes to change his mind and withdraw, contact me before that date. This year, the election will be by overall vote, not by geographic area, and four directors at large are to be chosen, though there may be as many nominated from any area as we receive petitions (or nominate from the committee). Only two may be elected from any one area, as stated in the By-laws.

In the past, the Nominating Committee, I understand, has relied upon receipt of names of potential candidates from highly respected and qualified individual members, and has made their choice from these suggestions. We will, naturally, still welcome suggestions from individual members, and will also, as in the past, contact these potential nominees as to their qualifications. However it would be preferable if rather than one person submitting a name or names, he would get the necessary other signatures and make this a nomination by petition. This is not to say that I wish us to shirk our responsibilities if we feel there is any one individual who is eminently qualified, but that I feel that the nomination by petition is the preferential way, by making the committee aware that the nominee is known and respected by his close model railroading associates.

I would also like to state what I
Continued on Next Column, Bottom

Region Alerted for Dead Beat by Metropolitan Council

The Metropolitan Council of Model Railroad Clubs, having long enjoyed in various official capacities since its founding, the exuberant and efficient services of one Peter C. Gray the Third was, to a Club, enchanted to hear of his election to the office of Secretary for the Northeastern Region. While the Council in no way expects Pete to run through any less quantity of typing ribbon (and in fact wishes him Godspeed over the keys), it has moved to salute the NER for its judicious selectivity and inspired choice.

Though the Council's primary aim is to foster the hobby of model railroading - having, as it does, an uncanny collection of modelling talent, together with the extensive facilities to launch a broad-based promotion of railroading in miniature, it is not above looking to the precautionary. In exercising a certain amount of abounding restraint to counteract the occasionally erotic enthusiasm of its officers, the Council believes in perfect honesty. The rule has always been to lay the cards on the turntable.

With this in mind, The Metropolitan Council of Model RR Clubs finds it necessary to present the NER with a copy of a locally distributed poster.

LOOK OUT FOR Hotel Jumper & Dead Beat.

The undersigned wishes to warn Hotel and Livery-men to look out for

PETER C. GRAY III, of Woodridge N.J., who, on the night of May 18th, 1967, got away from an officer at New London, when about ready to start for the Groton Jail for beating Hotel and Livery-men.

Hotels and Newspapers post him and pass him along.

He is a young man about 28 years old, weighs about 180 pounds; very dark complexion, with dark eyes; about 5'3" in height, a State-prison countenance; was dressed in a dark suit, with black soft hat, when last seen.

For further particulars address

KENNETH MARTIN
Metropolitan Council of Model Railroad Clubs
New York N.Y. May 12, 1967.

This unfair warning is alleged to have been seen in the New London NHRR baggage room and other public Connecticut places subsequent to the NER '67 Spring Convention. Further, the staid Council thinks the Woodridge Postmaster should be notified, but agreed that a notice in the NER COUPLER would suffice for the time being.

KEN MARTIN

Continued from Column 2

personally feel are the two most necessary qualifications for a Director: most important, that he be willing and able to give up his valuable time and be willing to work for the betterment of the whole Region and its membership, and second, but not less important, that he be willing and mature enough to assume the necessary responsibilities connected with the position. It is certainly highly helpful if he has had some executive or leadership experience in the past.

I wish to repeat that we will accept petitions as of now, and up until 12/31, 1967. This will give the Nominating Committee the time, if insufficient petitions have been received from any area, to make a diligent attempt to locate willing nominees from such area.

Signed: FRANK W. SKUTSCH, Chairman
NER Nominating Committee

PIKE REGISTER OFFICIAL GUIDE BEING PUBLISHED

There are now 277 pikes registered with this Committee, which will all be published in the "Official Guide", due in the Fall. To have your pike listed in the Guide, it must be registered with us by no later than August 1, 1967. If your pike hasn't already been registered, do so RIGHT now - just send us, on a 3x5 card (one for each pike name, up to a maximum of 3 names) the pike name, your name, address (including ZIP code) together with your NER and NMRA membership numbers. If you wish a receipt of registration, enclose a stamped, self-addressed envelope. Mail to the Pike Registration Committee (address on mast head.) Remember, if your pike is already registered with us, it will be included. (All pikes which have been published in the "Coupler" are registered, and all received up to 5/28 have been published, either in prior issues, or below:

Bonnyville & Southern RR
Joseph A. Bonaventura Jr.
So. Portland, Me.

Chestnut Creek Electric Rwy
Ira L. Deutsch
Cranford, N.J.

Chestnut Valley RR
George E. Waldheim
Kearny, N.J.

Crummy Rwy (The)
Sidney Finkelstein
East Northport, N.Y.

Deadfall, Flatwheel & Hotbox RR
Patrick H. Bowen
Bronx, N.Y.

Ellenville & Georgetown RR
George V. Turner
New York City, N.Y.

Georgetown & Turnerville RR
George V. Turner,
New York City, N.Y.

Glens Falls Central RR Co
Harold J. Ferguson
Middletown, R.I.

Great Blue Mountain Lumber & Stone Co
James D. Clokey Ltd.
Amityville, N.Y.

Horseneck, Sawpits & Soundbeach RR
Patrick H. Bowen
Bronx, N.Y.

Lack & Wanna
James M. Crump
Natick, Mass.

Lugubrious & Necessitous Rwy
Patrick H. Bowen
Bronx, N.Y.

Midland Central RR
Edward I Jones
Everett, Mass.
National de Quebec (N de Q)
Gabriel Houle
Montreal, P.Q., Canada

Northeast Inland & Costal RR
Joseph A. Bonaventura Jr.
So. Portland, Me.

Ontario & Hudson RR
Ira L. Deutsch
Cranford, N.J.

Reseau Transkebec Rlys
Gabriel Houle
Montreal, P.Q., Canada

Cont'd from Column 1

Rutland RR (Conn. Div.)
Edwill H. Brown
Norwich, Conn.
St - Henri, Verdon & Western
Gabriel Houle
Montreal, P.Q., Canada

Seagott Connecting & Terminal Rwy Co
James D. Clokey
Amityville, N.Y.

I & P Trainway
William O. Doran
Stratford, Conn.

Taconic Central RR
William J. Carter Sr.
William J. Carter Jr.
Pittsfield, Mass.

Tower Fast Freight Express Line
Joseph A. Bonaventura Jr.
So. Portland, Me.

West Shore & Susquehanna RR
J. Tomchick Jr.
Little Ferry, N.J.

ACHIEVEMENT AWARDS

Andrea Towle became the first female member of NER to receive a Certificate of Achievement. Pictured below Achievement Program Chairman Don Clerke presents Andy with the award for Association Volunteer



(J. French photo)

Other awards presented at the New London Convention went to Walter Olevsky and Dick Towle for Association Volunteer, Walter Olevsky and John Dias, Model Railroad Author, D. Stanley Decker for Chief Dispatcher, and Al Westerfield, Master Builder - Cars.

LETTERS: Continued from Page 8

Again let me say as an outsider and the Editor of a N.R.H.S. chapter Newsletter, I enjoy reading the "Coupler".

ED WADHAMS

ED. NOTE: Thanks for the kind words. Now how about joining us and getting your own personal copy of The Coupler. The NMRA is a much improved organization and we've always had fun in NER.

TRAIN EXCHANGE CENTER
3636 Main St. STRATFORD CONN.
06497 Mail Order - All Gauges
Repair Service - OPEN FRIDAY NIGHTS
Ken & Dorothy Hyslop

OPERATION

problem/

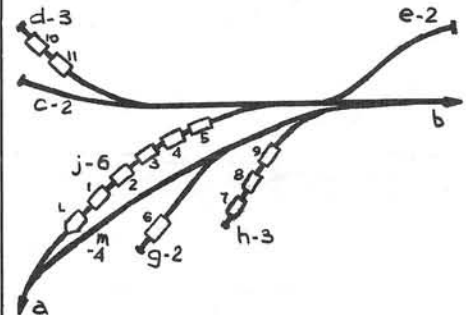
by ROB ROBINSON

As so often happens, just after shooting my mouth off in the May issue, three solutions from Stan Wlasczynski arrived and proved me a liar. He did the February problem in one less move than I indicated in the last issue.

As for the May problem: it seems to have caught everyone out planting his spring garden. Only John Dias, William Gray, and Richard Perryman sent solutions. The shortest one uses 32 moves, was sent by Dr. Dias, and goes as follows:

- | | | | |
|------------|------|--------------|---------|
| 1. L-3-4 | to b | 17. 5-L | to b |
| 2. L-3-4-7 | g | 18. 5-L | g |
| 3. L-3-4-7 | d | 19. 1-5-L | b |
| 4. L-3-4 | g | 20. 1-5-L | a |
| 5. L-3-4 | fc | 21. 5-L | b |
| 6. L | g | 22. 5-L | g |
| 7. L | b | 23. 5-L | fc |
| 8. L | a | 24. 5-L-3-4- | |
| 9. 5-6-L | b | | 8-9 g |
| 10. 5-6-L | g | 25. 5-L-3-4- | |
| 11. 6-L | b | | 8-9 d |
| 12. 6-L | a | 26. 5-L-3-4- | |
| 13. L | b | | 8-9-7 g |
| 14. L | g | 27. 5-L-3-4- | |
| 15. 2-5-L | b | | 8-9-7 b |
| 16. 2-5-L | a | 28. 5-L-3-4 | g |
| | | 29. 5-L-3-4 | to c |
| | | 30. 5-L | g |
| | | 31. 5-L | b |
| | | 32. 5-L-8-9 | g |

Before passing to the new problem offered below, I'd like to draw your attention to the great World Exhibition, commonly known as Expo 67, which is being held in Montreal until the end of October. Having already visited it, I can recommend it to all members of the NER. Both the large Canadian railways, CN & CP, have pavilions which will be of interest to all. In addition the museum of the CRHA, at Delson, is very close to the Expo site. Montreal is only a day's drive away from most of the New England states, and Expo will well reward the visitor.



This month's problem goes as follows: set out cars 1-2 @ e, 3 @ g, 4 @ d, 5 @ c. Pick up, behind locomotive L, cars 6,8,9,10, & 11. Where siding capacities are not shown, assume they are large enough to hold many cars. The best solution I receive at 1285 Lepine St., St. Laurent 9, Quebec, will be printed in the October issue. So long for now.

ROB ROBINSON

WELCOME: Continued from Page 4

RHODE ISLAND

Ralph W. Cuthbert
100 Algonquin Rd., Rumford 02916

David A. Kimball
161 Hadde Ave., Cumberland 02864

DIVISION NEWS

Continued from Column 1

GARDEN STATE

Fred Huss, Sec'y., 305 Elissa Court, South Plainfield, N.J. 07080

The most recent activity of the GSD was a joint meet with the Sunrise Trail Division held June 17th on Staten Island, N.Y. More than 75 persons from New York and New Jersey attended the all-day gathering which headquartered at the historic Sailor's Snug Harbor, and featured informal "roundhouse" discussions of various model topics and model displays, as well as a tape-slide clinic on model contest judging. All during the day groups went via car or on the S.I. Rapid Transit Ry. for a tour of the well-scenic H0 pike of the Staten Island Society of Model Railroaders. In addition to most of the directors and officers of both divisions, those attending included Region President-elect Glenn Wagner. Chairman of the meet was Charles Gerow, GSD Director.

The next GSD meet is the annual family picnic and train ride to be held Sept. 10th at the Black River & Western Steam RR headquarters, Ringoes, N.J. A special GSD car will be open from 10:30 AM and will leave at 1:45 PM for a round trip to Flemington, N.J. behind steam. Registration will be 50¢. For more information call Rix Beals, 2 Lexington Rd., Somerset, N.J. 201-KI-5-8538.

A tour of home layouts in the Plainfield area is scheduled for November 11.

RHODE ISLAND

Hans F. Schell, Sec'y., 125 May St., South Attleboro, Mass. 02774

The Rhode Island Division held its yearly election on June 26th, electing to its BOD two new members and choosing a new Chairman. The Board of Directors for the coming year or two is now as follows:

William E. Chandler...Chairman
Robert S. Hallam.....Vice Chairman
Hans F. Schell.....Sec'y-Treas.
Dr. John F. Dias, Jr.
George A. Desevomeau
Ralph W. Foster
Michal Antoni
Len Estes
Ronald Adcock
Edward Meeker

A motion picture was shown entitled: "The Power Behind the Nation", a film story of the Norfolk and Western.

There were 32 members and friends in attendance.

A business meeting is planned for the third week in July when the new Board will make plans for a full membership meeting in September. We learned something during our first year in operation and we plan to draw more model rails from our area in coming affairs.

Happy railroading wherever you can find it this summer!

NUTMEG

Edward J. Pasko, Sec.-Treas., 63 Hoffman St., Torrington, Conn. 06790

The Nutmeg Division conducted its regularly scheduled May meeting on May 13th in conjunction with the Regional Spring Convention in New London. At that time a locomotive was raffled off to secure funds for the purchase of watermelons to be offered free to Nutmeggers attending the annual picnic.

Continued on Next Column, Top

This affair was held at Lake Compounce, Bristol, Conn. on Sunday, July 16th. Feature of the day for the large number of members, families and friends attending was numerous rides on the Gillette Castle Railroad which was transferred to the amusement park several years ago from the Gillette estate.

ALOUETTE

Dr. Darryl E.R. Townsend, 5686 Queen Mary Rd., Montreal 29, Quebec, Canada

This is the quiet season for the Alouette Division except for the writer's own personal activities. However they are expecting a lot of drop-ins from visitors to Expo 67. In fact Doc writes as follows:

For those visiting Canada (Montreal area) this summer I personally extend an invitation to contact me re: directions, visits or just a plain gab-fest. The full-scale museum at Delson is now open and boasts one of the largest displays of steam power on the continent; very much worth seeing. I expect to be in Montreal all summer except for an occasional weekend - all welcome, but please call first. Phone is Area 514-487-1010. Have a good summer.

(ED - That's what I call Good Neighbor hospitality.)

HUB

Harold I. Clark, Sec'y., 3 Frederick St., Worcester, Mass. 01605

The Hub Division held its Annual Meeting in Arlington, Mass. on April 29th and the Directors elected for two years were Bill MacIver, Al Gooding, Ralph Pearson and Herb Stock. Ralph Pearson and Herb Smith. John Stock was elected for one year. While Father Choo-Choo showed railroad pictures, the Directors met and elected Bill MacIver Chairman, Dave MacDonald Vice Chairman and Harold Clark Secretary-Treasurer.

Tentative plans call for an open house meeting in the middle of November and the Hub Division will celebrate its 10th Anniversary in April.

The Hub Secretary sincerely hopes that the NER-HUB members will back the new mail ballot plan to the hilt, check on your fellow MRs and make sure they mail their ballots. Let's shoot for a 100%, let's get out the vote. To the NER BOD: How about some kind of an Honor Certificate for the voting area coming up with the best voting percentage each year?

HUDSON- MOHAWK (Proposed)

John Hollner, Sec'y-Treas., 12 DeVoe Dr., Albany, N.Y. 12205

John advises that the correct name for this proposed Division is Hudson-Mohawk. Your Editor somehow got the last name first and vice versa in setting up the headline type for this column.

On Friday evening, June 16, a group of Albany area modelers assembled at the home of Glenn Wagner in Delmar, New York. Glenn conducted a tour of his layout and gave the group some pointers on scenery making for which he is a well-known expert within the Northeastern Region. A tape-slide

Continued on Next Column ; Bottom

SUNRISE TRAIL (Long Island)



Miss Nancy Page, 115 Whitney St., Westbury, N.Y. 11890, Correspondent; Robert Miller, 152-27 135th Ave., Jamaica, N.Y. 11434, Secretary.

The Sunrise Trail Division held its June meeting on Staten Island, where the members of this division met jointly with the members of the Garden State Division. The meet was held on the beautiful grounds of the Sailor's Snug Harbor. Model displays by the members of both divisions included past prize-winners from Regional conventions, and featured structures, rolling stock and a portable layout in sizes ranging from 0 to N. These models served as the springboard for informal discussion and helped the members of the two divisions to become acquainted with each other. The meeting gave all of those present an opportunity to ride on the Staten Island Rapid ("###\$\$\$") Transit from Tottenville to St. George and return. A stop was made enroute to visit the Staten Island Society of Model Railroaders and to view their layout which is housed in a portion of the waiting room of the Pleasant Plains station. Although the group is small in numbers, they've really done a great job, particularly in the area of scenery. Several of the members also had the opportunity to view the layout of Capt. Meacham who is a resident of Sailor's Snug Harbor.

A tape-slide clinic on model contest judging was also shown and was especially pertinent because of the upcoming Fall Convention.

The Convention will be held in the Garden City Hotel, Sept. 22-24. The site is easily accessible from all parts of the Island by car as well as by the LIRR so we're (The mighty Convention Committee) expecting 100% Sunrise Trail attendance. The convention will feature model contests, a slide contest (member to get those entries to Frank Skutsch), Rothberg's Motor Car Contest and a mystery contest which doesn't require advance registration or preparation (this contest is not a model contest, a switching contest, or a tractive effort contest, but a brand new contest that will be held during the Saturday morning clinic period) (ED NOTE: Bet it's a beauty contest). Let's make this the best convention that the Region has ever had, and the best attended one, too.

Continued from Column 2

clinic was shown on scenery and after that the group broke up and either ended up in bull sessions or getting more glimpses of Glenn's fine railroad.

Our next meeting will be announced later this summer for a September date at which time a membership drive and membership in general will be discussed. (ED.NOTE: Non-NER members in the Albany area reading this are advised to contact John Hollner to find out more about their next meeting.)

TROLLEY SPARKS

column by / **JERRY LAWLOR**

As you may have guessed by now, one of my pet peeves about model trolley lines is that many of them go nowhere. They exist for no apparent purpose except to allow the owner to say that he has a trolley line. The fact that his one car chases its tail around and around a circle, oval, loop, or some spaghetti bender's distortion of one of those configurations doesn't seem to bother the owner one bit.

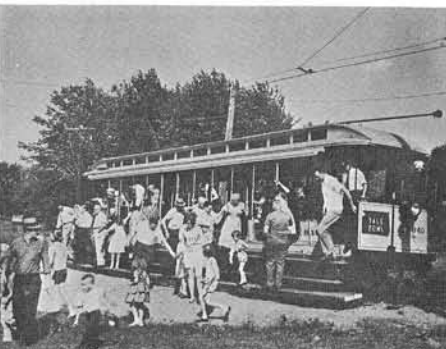
The success of any trolley line was dependent on the number of people it carried. In order to carry people the cars stopped frequently; not everybody wanted to ride from one end of the line to the other. Some of you may remember a song which was popular some years ago about a fellow named Charlie who couldn't get off the MTA in Boston. Since the trolleys are still running in Boston, I'm sure that over the years the general practice must have been to let most of the riders get on and off at the stops they chose.

Suggestion number one: When you design your model trolley line, make sure the cars stop here and there.

We said that the success of any trolley line was dependent on the number of people it carried. This meant that the car line had to be routed from one point to another through an area or several areas of population. People who lived in one area frequently worked, shopped, or sought their entertainment in other areas. They needed the trolleys and depended on them.

Suggestion number two: When you design your model trolley line, make sure your cars will provide a transportation service. Remember that car lines ran to ball parks, to beaches, to downtown shopping centers, to residential areas, to steamboats and ferry docks, to railroad stations, and to amusement parks. They ran to resort areas, scenic spots, factories, churches, and cemeteries. Without service to points like these the prototype trolley line could never have made a profit. Will your trolley line be able to make a profit? It will if it services areas that generate traffic. Give it some thought before you lay your track and string your wire.

Suggestion number three: Choose equipment appropriate to the period you are modelling. This is self-explanatory, but with it goes a caution to choose equipment appropriate to the size of the community to be serviced by your line. Don't, for example, use a heavy interurban car to provide local service. It can be done, but track, wire, clearances and power drain would have discouraged a prototype line because the stockholders always press management to make a profit which can be distributed as dividends.



CONN CO. OPEN CAR 840 AT THE CERA TROLLEY MUSEUM, WAREHOUSE POINT, CONN.

FOR THE "O" GAUGER

column by **KEN HYSLOP**

Still trying to recall what the HO Boys have done for all of us "O" Gaugers as Paul Shimada mentioned in his recent article in the NMRA Bulletin. Seems to me that us "O" (for old) fellows started something for the HO Gaugers, that is the hobby of model railroading, back in the early thirties. And as he mentions, they can't do it all for us so why try and do anything. We have done pretty well for ourselves and are apparently going to keep it up in spite of being singled out by the NMRA as a Special Group. Of course there are all types of nuts in this hobby and we're just the best type.

It is pleasant to see and read the "O" Gauge column in The Bulletin and we welcome it as I think with contributions from "O" Gaugers around the country this column will grow and become a regular feature. Needless to say, we have had a similar article in our own COUPLER for many years now and am still having the same trouble all columnists have, that of getting material to print from others in this gauge. Sometimes I wonder just how many read this part of the Coupler but as I mentioned in the last issue, my "O" gauge now has a companion railroad system in the basement and that is the standard gauge railroad set up the early part of this year. Not that I left "O" gauge but I had all this equipment in cartons so I set it up to operate.

Nickel silver rail still is gaining in use but is becoming hard to obtain. Does anyone know of any .250 brass rail that is for sale?

EDITORIAL: Continued from Page 1
ern region as defined by the National who either never have joined the NER or former members who have not renewed. There are 2,500 NMRA members living in eastern Canada, New England, eastern New York State, and northern New Jersey and approximately 1,000 of these are presently members of NER. Even by the "old" mathematics which were in vogue when I was a growing boy, this leaves a balance of 1,500 potential new NER members.

In influencing President Alexander and the Region's Board of Directors to approve the expenditure of funds to print and mail 1,500 complimentary copies of The Coupler to non-NER members I staked my reputation that I could find at least 10 percent of you who would be "coupon clippers". I hope that your response will prove me right.

The most important aspect of membership in NER is the fact that the Region Pres-

Continued on Next Column

Continued from Column 2

ident represents all NMRA members in the region as their Trustee at the National Board of Trustee meetings. It is inconceivable to me that you would not want a voice in his election. This voice was previously only that of the approximately 130 NER members who attended our annual Election Meeting. Many of you have not joined NER in the past because you could not possibly get to the meetings. In New London, on May 14, 1967 our Constitution and By-laws were drastically revised to provide for the election of Directors (who in turn elect the President) by a mail ballot. Voting eligibility is still limited to NER members, but no longer the franchised few plus proxies who were able to be at the meeting; ALL NER members will now have the opportunity to vote.

This issue of the Coupler carries a reprint of our revised Constitution and By-laws. Otherwise it is a fairly representative edition. You can see for yourself it gives news of region and division affairs, provides special interest columns for the trolley and "O" gauge enthusiasts. You will also find an operating problem, details on the Achievement Program, an occasional poem, special notices and announcements, construction or layout articles, contest results, photos, and just about everything we can squeeze into 10 or 12 pages. Your attention is particularly directed to the write-up of our Fall Convention coming up September 22-24 in Garden City, with the hope that many of you who have never attended a regional convention will be there.

I have heard two concrete reasons for model railroaders not wishing to join the Region. The first is the requisite that NER members must also hold membership in the NMRA and they don't wish to join the latter. Since all of you who are receiving this complimentary Coupler are already NMRA members, this does not apply. The other reason, plainly stated, is just "not interested".

We hope this Coupler and appeal interests you, at least to the extent where you would put us on trial for a year. We don't ask any of your time, and not once will you find NER demanding your attendance at any activity. There are many interested members whose obligations prevent active participation. They enjoy passive membership fully as much as they could active, and in many cases they become active when the opportunity arrives.

Let's all become part of this cooperative spirit engendered by our mutual interest in model railroading through which so many of us have found friendship and a helping hand.

by: *Jeff French, Editor*
Clip and mail that coupon today!

NER MEMBERSHIP APPLICATION

To: Kenneth Hyslop, Office Manager
Northeastern Region, National Model Railroad Association
125 Lordship Road
Stratford, Connecticut 06497

I enclose \$1.00 for a full one year membership in the Northeastern Region, National Model Railroad Association. New Renewal

Name _____ NMRA# _____

Address _____

City _____ State _____ Zip _____

I do not belong to the NMRA. I enclose \$6.00 for membership in both organizations. _____

NEW LONDON: Continued from Page 1
 is their custom, spent the evening in session. Ensuing bull sessions lasted far into the night.

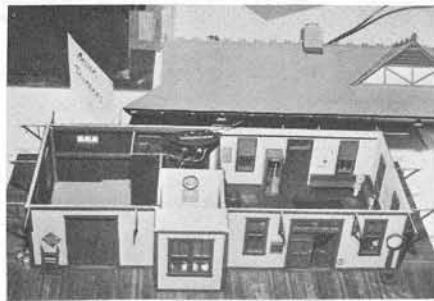
The pace picked up considerable Saturday morning with a steady influx of new registrants. The Roof Terrace Ballroom and adjacent areas was the scene of activity which included manufacturer's displays and sales tables, clinics, the model contest, photo contest, pass contest and "worst" contest. The White Elephant sales table for small items priced under \$3.00 which was tried out at Portland in the Fall was a tremendous success and merchandise changed hands quickly.

After lunch most of the group assembled at the New London RR station for a fantrip on the Roger Williams to the New Haven RR's large Cedar Hill yard in New Haven. Although safety precautions did not permit detrainning, most found that the view aboard the train was better than would have been possible on foot.

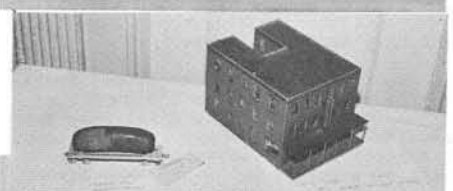
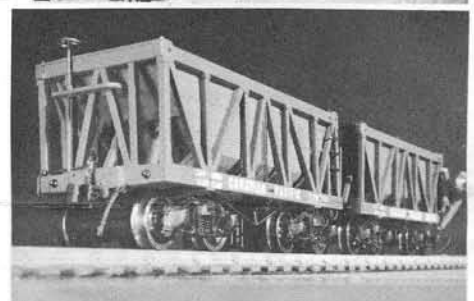
Following the "on time" return to the Hotel there was a Happy Hour for cocktails and socializing. The roast beef banquet was excellent. There were numerous door prizes given out to the more fortunate ticket holders following which the certificates for prize winning models were awarded by Contest Chairman Tom Prange. Contest results are published elsewhere, but it is worthy of mention that Gene Wolfe was awarded the Delaware Trophy for "best in show" and Norman Briskman received a new Hub Division award for "runner-up". Achievement Program Chairman Don Clerke issued achievement awards to six NER members who have completed the requirements since last Fall. Among these was the Region's first lady recipient, Andrea Towle. After the banquet an exciting auction sale of model railroad items was conducted by Stan Bradley.

Sunday morning the after breakfast hours were devoted to the Annual Election Meeting with results as published elsewhere in this Coupler. Also at this meeting the members voted approval of recommended changes in our Constitution and By-laws to establish election areas and set up the mechanics for electing Directors by a mail ballot.

When the members departed at 12:30 it was with a feeling of accomplishment and reward for a weekend well spent with his fellow model railroaders.



NER
 New
 London
 Photo
 Album



3/4" SCALE COME'N STATION BY JOHN POLLAK
 PRES. ALEXANDER AND FANTRIP SPECIAL
 HUB DIVISION REPRESENTATIVES
 CONV. CHM. HYSLOP EXPOUNDS; LADIES WISH

HE WOULDN'T
 PHOTO AND ORE CARS BY NORM BRISKMAN
 KEN MARTIN'S "WURST" CAR; JEFF FRENCH'S
 WORST STRUCTURE
 FIRST AWARD SANDING HOUSE BY JOHN KLOTZ

THE COUPLER

Official Bulletin of the Northeastern Region
 of the National Model Railroad Association

125 Lordship Road STRATFORD, CONN. 06497

THIRD CLASS MATTER

POSTMASTER: RETURN
 REQUESTED-POSTAGE
 GUARANTEED BY SENDER



ROBERT STROBEL,
 1203 89th St.,
 NORTH BERGEN, N.J. 07047

(A) HQ#5Mb
 1961
 4

REGULAR 4N03 AUG 1