

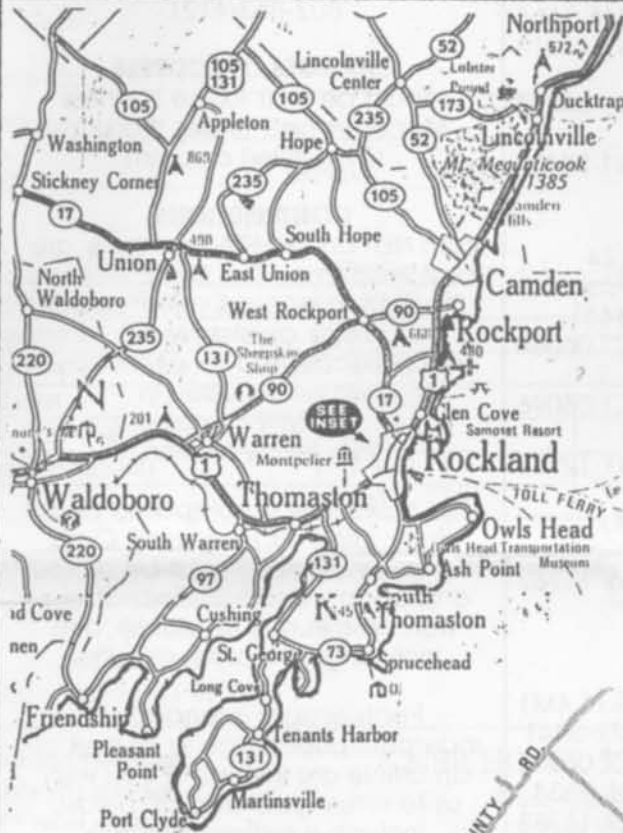
NER



Coupler

#179, September 1994

A Publication of the Northeastern Region, National Model Railroad Association



The Magic of Maine

NER Fall Convention 1994

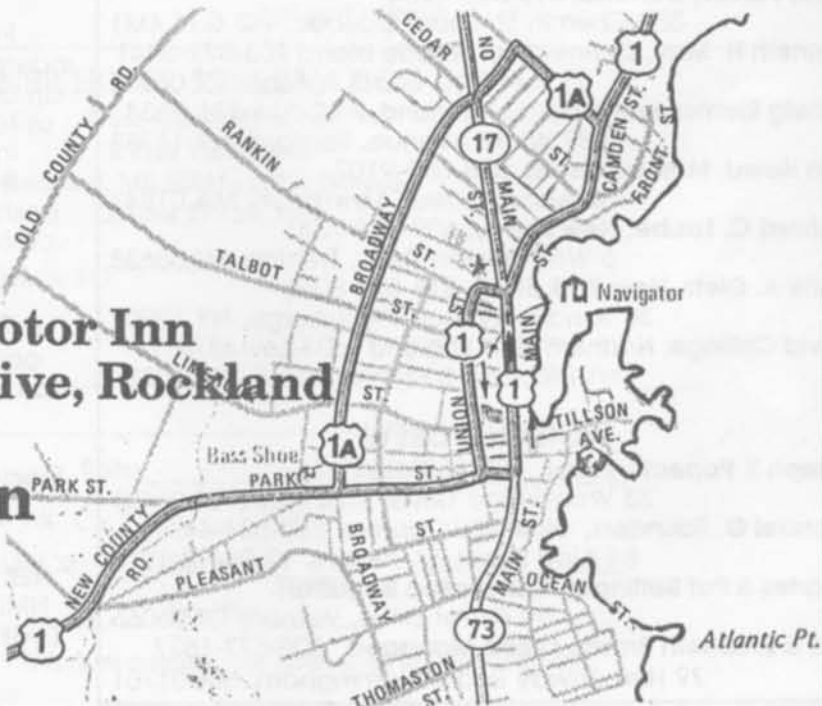
Railfan Trip, Clinics, Layout Tours, Trade Show, Auction Banquet

21-23 October
Trade Winds Motor Inn
2 Park View Drive, Rockland

Registration

Form, p. 7

Accommodations are limited, do it now!



NER BRASS

OFFICERS

Brian C. Whiton, President 203-623-8512
94 & 96 Spring Street, Windsor Locks, CT 006096
Glenn Glasstetter, Vice -President, 802-434-3316
RFD #1, Box 385, Richmond, VT 05477
James Heidt, Past President & NMRA Trustee 315-245-3664
PO Box 195, Camden, NY 13316
Diane Salvatore, Secretary 609-769-3065
33 Elm Street, Woodstown, NJ 08098
James Truax, Treasurer 802-864-5052
32 University Terrace, Burlington, VT 05401

DEPARTMENT CHAIRPERSONS

Bob Boudreau, Achievement Program 506-672-2774
PO Box 7122, Station A, Saint John, NB E2L4S5 Canada
Kenneth H. May, Convention Chairman, 203-872-3441
71 Buff Cap Road, Tolland, CT 06084
Brian C. Whiton, Model Contest Chair, 203-623-8512
94 & 96 Spring Street, Windsor, CT 06096
Frank A. Dietz, Photo Contest Chair, 518-562-8058
38 Sandra Avenue, Plattsburgh, NY 12901
Diane Salvatore, Non-rail & Crafts 609-769-3065
33 Elm Street, Woodstown, NJ 08098
June Neumen, Non-rail & Crafts 516-798-0575
149 Clark Boulevard, Massapequa, NY 11762

DIRECTORS

Denis Fortier, Canada, 418-665-4284
380 Chemin St. Louis, Quebec, PQ G1S 4M1
Kenneth H. May, Connecticut, Rhode Island 203-872-3441
71 Buff Cap Road, Tolland, CT 06084
Ludwig Riemenschneider, Long Island, NYC 516-781-3534
4039 Wicks Avenue, Seaford, NY 11783
Don Howd, Massachusetts, 508-689-9102
32 Adams Street, Lawrence, MA 01843
Richard C. Laube, New Jersey, 609-882-7341
6 Worthington Drive, Trenton, NJ 08638
Frank A. Dietz, New York State 518-562-8058
38 Sandra Avenue, Plattsburgh, NY 12901
David Collinge, Northern New England 603-569-4876
RR2, Box 500, Wolfeboro, NH 03894

WORKING CREW

Joseph T. Popecki, Editor 802-863-4121
33 Woodridge Drive, Burlington, VT 05401
Michael G. Saunders, Staff NER Coupler 802-524-4429
84 Aldis Street, St. Albans, VT 05478-1913
Charles & Pat Bettinger, Convention Registrars
29 Foster Drive, Vernon, CT 06066
Rod & Elizabeth Brown, Office Managers 508-877-1827
79 Hemenway Road, Framingham, MA 01701

#179, September 1994

This newsletter is the official publication of the Northeastern Region, National Model Railroad Association (NMRA) Inc. and is published four times a year.

Joseph T. Popecki, Editor

33 Woodridge Drive
Burlington, VT 05401
802-863-4121

CHANGES OF ADDRESS

should be sent to the Business Manager (see under Working Crew in left column)

CONTRIBUTIONS

from NER and NMRA members are most welcome. The Editor reserves the right to accept, reject or edit copy as received. Articles accepted for publication will be included in *The NER Coupler* in a timely fashion.

The newsletter is composed on a Macintosh Performa using Claris Works. Since copy must be edited and adapted to issue format, it is welcome in any readable form including computer diskette.

Photographs intended for individual publication or as part of an article are invited. If you wish us to return your photos, please include a sufficiently large envelope and adequate postage. Color photos of good color balance and contrast are acceptable.

Letters to the Editor of a constructive and professional nature will also be considered for publication.

Deadline for next issue is 10 November 1994

NER Membership is open to any NMRA member at \$6 per year. Look for the application blank in each issue.

Magic of Maine

NER Fall Convention

Rockland, ME - October 21 - 23, 1994

The NER is pleased to present the 1994 Fall Convention in Rockland, Maine. Co-chairmen Henry and Ellie Groth have an exciting Convention program planned that will take place the weekend of October 21 through 23, 1994. Convention headquarters will be the Trade Winds Motor Inn located right on the water in Rockland. Our room rates are exceptionally affordable, and the highlight of the convention will be a fan trip on the Maine Coast railroad from Rockland to Wiscasset and back.

So, plan *right now* to attend the NER Fall Convention in Rockland. It will be an exciting time.

Convention Hotel

The Trade Winds Motor Inn is located at 2 Park View Drive, right in the heart of Rockland overlooking Penobscot Bay. This one hundred and forty room Inn features comfortable rooms, a pool and hot tub, and an exercise room. Right in the hotel is the Red Jacket Restaurant, which features excellent food at reasonable prices. Many of the convention activities will take place at the Trade Winds, except for the Trade Show. Room rates are exceptionally low for this convention, but due to the overall limited number of rooms in Rockland, we urge you to reserve early, as there is also a Baptist Convention in town that same weekend.

Railfan Trip

The railfan trip will be on the Maine Coast railroad, traveling right along the ocean from Rockland to Wiscasset and back. The trip will depart at Noon and return approximately 4:30 P.M. The train will depart from the roundhouse, approximately 1/2 mile from the hotel. There is plenty of parking. The railroad will provide the usual opportunities to photograph the train and the local sights. The scenery cannot be topped if you love the ocean. It will be an exciting time for all who participate. Because of the scenic beauty of this trip there will *not* be a separate trip for the ladies, so guys, take your favorite gal on this "Guys and Dolls" excursion.

A special treat has been planned for the fan trip. Our conductor will provide a commentary describing the places and/or objects of interest along the route. One of these places or objects has been chosen as the subject of a contest. All conventioners on the fan trip will be given the opportunity to determine from the commentary the identity of this location or object. Two prizes consisting of free tickets to the Sunday morning Buffet breakfast will be awarded to the winners.

Rail Clinics

The clinic schedule has not yet been confirmed, but plans call for clinics to be presented both Friday evening and Saturday morning.

Contests

The full complement of NER Contests will be held at this convention. Plan to bring your entries for the Model Contest, Photo Contest. We are hoping that there will be a Craft Contest if personnel can be found to run it. If you are interested in helping out with this event, please Pat Bettinger or Brian Whiton. Entries may be submitted for the contests on Saturday morning.

Trade Show

Show Chairman Terry King has arranged for a Trade Show in the gymnasium of the Rockland High School. This location is approximately 1/2 half mile from the Trade Winds and will provide plenty of parking and a large facility. Plans call for operating layouts and continuous movies as well as a large number of dealer tables. Refreshments/luncheon will be available with proceeds going to Project Graduation. Since there is no lunch available at the Trade Winds, you might plan to have lunch at the Trade Show before going on the Fan Trip.

Layout Tours

Layouts are being lined up as you read this.. For Friday evening there will be two home layouts open. There is one layout open on Sunday for going home. Others are

being sought. Also on Sunday, weather permitting, there will be outdoor train rides at Henry Groth's home

Banquet

The Banquet will be held in the Trade Winds Motor Inn. The entire Red Jacket Restaurant will be held for us. The banquet will be a buffet featuring items such as Beef Burgundy, Baked Stuffed Shrimp, and Marinated Chicken Breast. Other dishes provided will be green bean casserole, rice pilaf, whipped potatoes, tossed salad, rolls, butter, dessert and beverage, with a cost of less than \$20, this will be an exceptional value. During the banquet there will be the usual assortment of awards, announcements, door prizes and the installation of the new officers and directors.

Auction

Instead of a banquet speaker, the local committee has opted to provide an Auction instead. Everyone is encouraged to clean out their storage shelves and bring along those items that have worn out their welcome with you. After all, that tired item of yours may just be someone else's treasure. And besides, it's fun!

Non Rail Program

The Non-Rail program will begin with the Baking contest. All the convention participants (males included) are encouraged to bring with them a platter of their favorite recipe cookies. These should be received in the Registration area (Harbor View Room) by 7:00 PM or upon arrival Friday evening. These will be judged and prizes awarded for the best cookies on Saturday evening. In addition, all the cookies will be consumed as the refreshments in the hospitality room.

Friday evening there will be ladies clinics that will run from 8:00 PM until 10:00 PM. The topics will be "Types of Indian Jewelry" and "Christmas Ornaments". Then on Saturday morning, there will be a clinic "Indian Dream Catchers". The ladies are encouraged to make the afternoon fan trip a "Guys and Dolls" affair with their partners.

For those who would prefer to shop or see local attractions, a listing of available local activities will be provided. Some of the interesting things to see are a ferry ride to Vinalhaven, two museums, shopping featuring an old fashioned 5 & 10, J. C. Penney, Walmart and Ames.

After the fan trip, from 4:30 to 6:00 PM, there will be a pool party at the pool. This facility also contains a sauna, jacuzzi and steam room.

Saturday evening, following the banquet, the ladies are invited to attend a Bingo party. This has become something of a tradition, and lots of fun. Ladies are reminded to bring a small, wrapped or unwrapped gift to be used as a prize.

Breakfast Buffet

On Saturday and Sunday mornings, the Red Jacket Restaurant will put on a Breakfast Buffet. This will provide that special opportunity to share breakfast with your friends from other parts of the NER before they head for home. The cost of this Buffet will be \$6 per person; regular menu items will also be available. Seating is limited, so plan to eat early.

Register Early

We are encouraging everyone to register early for this convention. Not only is it in beautiful Maine, with a fan trip along the Maine Coast on trackage that has not been in use for many years, but this convention is one of the most reasonably priced conventions in many years. Facilities are somewhat limited, however, so please register for the convention *early* and also get your hotel reservation with the Trade Winds in *early*. Rockland Hotels are busy - you may not get a room *anywhere* if you do not reserve *early*.

Directions

Rockland lies on US Route 1 about halfway between Portland and Bar Harbour, Maine. When coming from the South, follow I-95 north from the Portland area until you reach Brunswick. There Route 1 and I-95 separate. Stay on Route 1 until you enter Rockland. Route 1 is Park Street. Follow Park Street to the intersection of Main Street. Route 1 North will turn left. The entrance to the Trade Winds is straight across the intersection on the left.

When coming from the North, follow Route 1 South to Rockland. Route 1 is routed around the downtown area of Rockland. When you reach the intersection with Park Street, Route 1 South will turn right. Route 1 North will turn left. Turn left and follow Park Street to the intersection of Main Street. Route 1 North will turn left. The entrance to the Trade Winds is straight across the intersection on the left.

being sought. Also on Sunday, weather permitting, there will be outdoor train rides at Henry Groth's home

Banquet

The Banquet will be held in the Trade Winds Motor Inn. The entire Red Jacket Restaurant will be held for us. The banquet will be a buffet featuring items such as Beef Burgundy, Baked Stuffed Shrimp, and Marinated Chicken Breast. Other dishes provided will be green bean casserole, rice pilaf, whipped potatoes, tossed salad, rolls, butter, dessert and beverage, with a cost of less than \$20, this will be an exceptional value. During the banquet there will be the usual assortment of awards, announcements, door prizes and the installation of the new officers and directors.

Auction

Instead of a banquet speaker, the local committee has opted to provide an Auction instead. Everyone is encouraged to clean out their storage shelves and bring along those items that have worn out their welcome with you. After all, that tired item of yours may just be someone else's treasure. And besides, it's fun!

Non Rail Program

The Non-Rail program will begin with the Baking contest. All the convention participants (males included) are encouraged to bring with them a platter of their favorite recipe cookies. These should be received in the Registration area (Harbor View Room) by 7:00 PM or upon arrival Friday evening. These will be judged and prizes awarded for the best cookies on Saturday evening. In addition, all the cookies will be consumed as the refreshments in the hospitality room.

Friday evening there will be ladies clinics that will run from 8:00 PM until 10:00 PM. The topics will be "Types of Indian Jewelry" and "Christmas Ornaments". Then on Saturday morning, there will be a clinic "Indian Dream Catchers". The ladies are encouraged to make the afternoon fan trip a "Guys and Dolls" affair with their partners.

For those who would prefer to shop or see local attractions, a listing of available local activities will be provided. Some of the interesting things to see are a ferry ride to Vinalhaven, two museums, shopping featuring an old fashioned 5 & 10, J. C. Penney, Walmart and Ames.

After the fan trip, from 4:30 to 6:00 PM, there will be a pool party at the pool. This facility also contains a sauna, jacuzzi and steam room.

Saturday evening, following the banquet, the ladies are invited to attend a Bingo party. This has become something of a tradition, and lots of fun. Ladies are reminded to bring a small, wrapped or unwrapped gift to be used as a prize.

Breakfast Buffet

On Saturday and Sunday mornings, the Red Jacket Restaurant will put on a Breakfast Buffet. This will provide that special opportunity to share breakfast with your friends from other parts of the NER before they head for home. The cost of this Buffet will be \$6 per person; regular menu items will also be available. Seating is limited, so plan to eat early.

Register Early

We are encouraging everyone to register early for this convention. Not only is it in beautiful Maine, with a fan trip along the Maine Coast on trackage that has not been in use for many years, but this convention is one of the most reasonably priced conventions in many years. Facilities are somewhat limited, however, so please register for the convention *early* and also get your hotel reservation with the Trade Winds in *early*. Rockland Hotels are busy - you may not get a room *anywhere* if you do not reserve *early*.

Directions

Rockland lies on US Route 1 about halfway between Portland and Bar Harbour, Maine. When coming from the South, follow I-95 north from the Portland area until you reach Brunswick. There Route 1 and I-95 separate. Stay on Route 1 until you enter Rockland. Route 1 is Park Street. Follow Park Street to the intersection of Main Street. Route 1 North will turn left. The entrance to the Trade Winds is straight across the intersection on the left.

When coming from the North, follow Route 1 South to Rockland. Route 1 is routed around the downtown area of Rockland. When you reach the intersection with Park Street, Route 1 South will turn right. Route 1 North will turn left. Turn left and follow Park Street to the intersection of Main Street. Route 1 North will turn left. The entrance to the Trade Winds is straight across the intersection on the left.

Wye(Y)Track Wiring

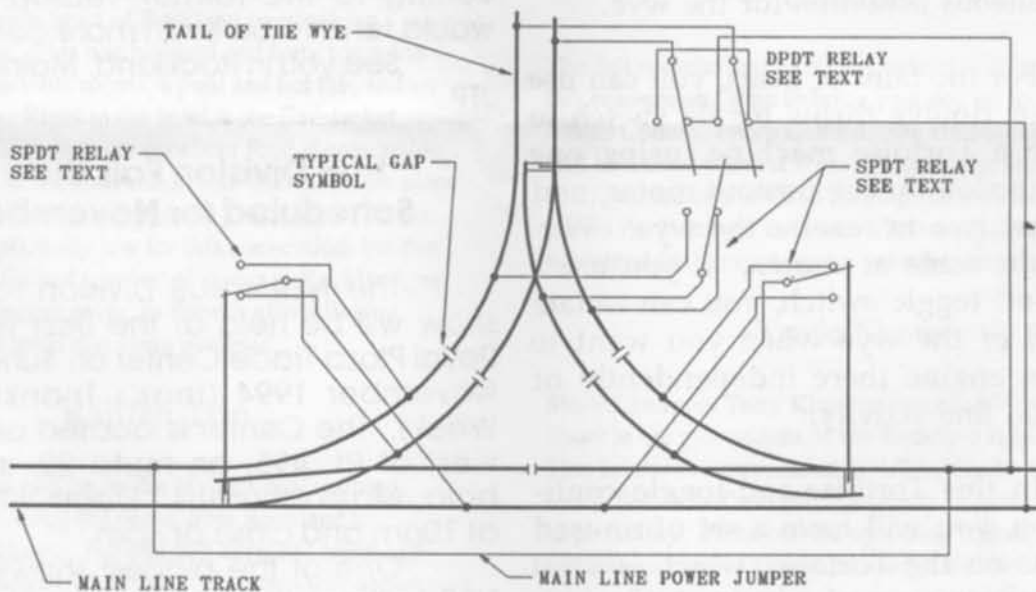
Brian Whiton

Let's have a look at wye track wiring and operation for a minute. I have two such wyes on my layout, and they present a surprising amount of operational and wiring difficulty. I think if you give these thoughts some consideration, it will all come clear. You may want to employ this wiring method on your layout if you have a wye.

Operationally, I suggest you take the least significant direction of the wye and call it the tail. Our intent here is to automate the polarity reversal needed to make the wye functional. The tail is the point

Your engine enters the wye from the left of the drawing. Upon reaching the tail of the wye, the engine stops and the turnout is changed to the opposite sense. This automatically reverses the polarity of the entire wye track, so that you still have a match when exiting the wye to the right. Of course, if you do not open the turnout at the main line, as my operators are so fond of doing, you will get a short with some switches.

For those of you who are unfamiliar with schematics, get help from a friend. I can't really make this any simpler than shown. For those of you used to reading schematics, you can readily see that the turnout linkage, in addition to throwing the points of the turnouts, is used to activate the relays, one of



where operation naturally stops, allowing for reversal of the current. In a turning wye as shown in the illustration, the obvious choice is to let the direction sense of the tail control the polarity sense of the track.

which controls the polarity of the wye. The other is for the switch point power routing and is necessary only on those layouts using "power routed switches". Many commercial turnouts have their power connected to all the legs all of the time.

We can run through the moves:

>> p. 6

p. 5 >> Wye Turnouts

No matter what your choice of turnouts, you can use relays or limit switches to handle the polarity swap. Some switch machines have built in relays, however, machines like the Tortoise have too few contacts to do the job. The Tortoise, however, is the easiest of all to use when adding limit switches. I use a C&K switch for this job. Superglue these to the body of the Tortoise machine and let the actuator wire throw the limit switch. Could anything be easier?

I have also used these same switches and let the cam of an NJ machine bump the switch actuator to close it. I solder a flat tab unto the wipers of the two C&K switches to get simultaneous actuation for the wye.

For the faint of heart, you can use a 3-pole, double throw toggle switch to actuate a Tortoise machine, using one spdt function for the turnout motor, and the other two to reverse the wye. Wiring is the same as shown. If you use a center-off toggle switch, you can isolate the tail of the wye when you want to stop an engine there independently of the main line activity.

In this Tortoise-and-toggle configuration, you will have a set of unused contacts on the Tortoise, which is ideal for operating a signal or pair of signals to indicate the condition both physical and electrical that exists at the wye.

On my Addison Railroad, we use a ball signal to indicate the signal sense of the wye track. Next time I will share the plans for this critter with you and some ideas of installation.

The News Before It Happens

In the late thirties, Edward G. Robinson played the motion picture role of a publisher whose newspaper printed below the masthead the motto, "The News Before It Happens."

Unwittingly, your Editor was guilty of this dubious practice in the last issue. I was not aware that the newly elected officers, chairpersons and directors do not take office immediately upon the certification of their election.

I apologize to any of you whose careers I inadvertently cut short. As most of you know, officers are installed at the annual (fall) meeting. The BRASS page remains the same as in issue #178 along with a few updates. I felt that reverting to the former version (#177) would tend to be even more confusing.

See you in Rockland, Maine!

JTP

HUB Division Fall Show Scheduled for November

The NER's HUB Division fall train show will be held at the Best Western Royal Plaza Trade Center on Sunday, 20 November 1994 (that's Thanksgiving Week). The Center is located one mile west of Rt. 495, on route 20, in Marlboro, Massachusetts. Doors will open at 10am and close at 4pm.

One of the biggest shows in the NER territory, it will feature dealers, displays, operating layouts and movies & videos. And food for those who get hungry while shopping or otherwise having fun.

The donation at the door is: \$5 for adults, \$1 for children, and \$3 for HUB members. The maximum family charge is \$10. The facility is handicapped accessible. More information from Bill Goldthwait at 617-862-8078.

REGISTRATION FORM

Magic of Maine
 1994 NER Fall Convention
 Rockland, ME - October 21 - 23, 1994

| | |
|---------------------------------------|---------------------------------------|
| Name #1: _____ | Name #3: _____ |
| Address: _____ | Address: _____ |
| City: _____ St/Prov: _____ Zip: _____ | City: _____ St/Prov: _____ Zip: _____ |
| Name #2: _____ | Name #4: _____ |
| Address: _____ | Address: _____ |
| City: _____ St/Prov: _____ Zip: _____ | City: _____ St/Prov: _____ Zip: _____ |

| Item | Pre-Reg. | Reg. # 1 | Reg. #2 | Reg. #3 | Reg. #4 | Walk-In |
|---------------------------|----------|----------|---------|---------|---------|----------|
| Registration (Member) | \$ 12.00 | | | | | \$ 14.00 |
| Registration (Non-Member) | \$ 14.00 | | | | | \$ 16.00 |
| Registration (Youth) | \$ 6.00 | | | | | \$ 7.00 |
| Banquet | \$ 19.00 | | | | | \$ 21.00 |
| Fan Trip (Adult) | \$ 18.00 | | | | | \$ 20.00 |
| Fan Trip (Child) | \$ 9.00 | | | | | \$ 10.00 |
| Total | | | | | | |

Please make checks payable to "NER Conventions" and mail with this form to:

| | |
|---|---|
| Pat & Charlie Bettinger NER Convention Registration 29 Foster Drive Vernon, CT 06066 | (For Office Use Only) P Preregistered W Walk-in Paid by: C Check M Cash Amount Enclosed: |
|---|---|

Rockland Hotels are busy - you may not get a room *anywhere* if you do not reserve *early*.

NER HOTEL RESERVATION

Trade Winds Motor Inn
 2 Park View Drive
 Rockland, ME 04841 - (207) 596-6661
 October 21 - 23, 1994

Rates: Single: \$27 Double: \$37 Triple: \$47

Arrival Date: _____ Arrival Time: _____ # of Nights: _____
 Name: _____ # Adults: _____ # Children: _____
 Address: _____
 City: _____ State: _____ Postal Code: _____
 Home Phone: () _____ Work: () _____
 Master Card: _____ Visa: _____ AMEX: _____ Discover: _____ Check for Deposit: _____
 Card Number: _____ Exp. Date: _____

Make your reservation by September 18, 1994. You may fax your reservation to (207) 596-6492.
 Mary Jane Schepers, Group Sales Manager



R & E Brown, Office Managers
 79 Hemenway Road
 Framingham, MA 01701

First Class

TO

Herbert J Klein
 46-21 196th Street
 Flushing NY 11358

Fall Convention Issue
 Make Your Reservation Now!

NER Membership Application / Renewal

NORTHEASTERN REGION, NMRA

NAME _____
 ADDRESS _____

___ RENEWAL ___ NEW MEMBER

\$6.00 for 1 year membership

\$15.00 for 3 year membership

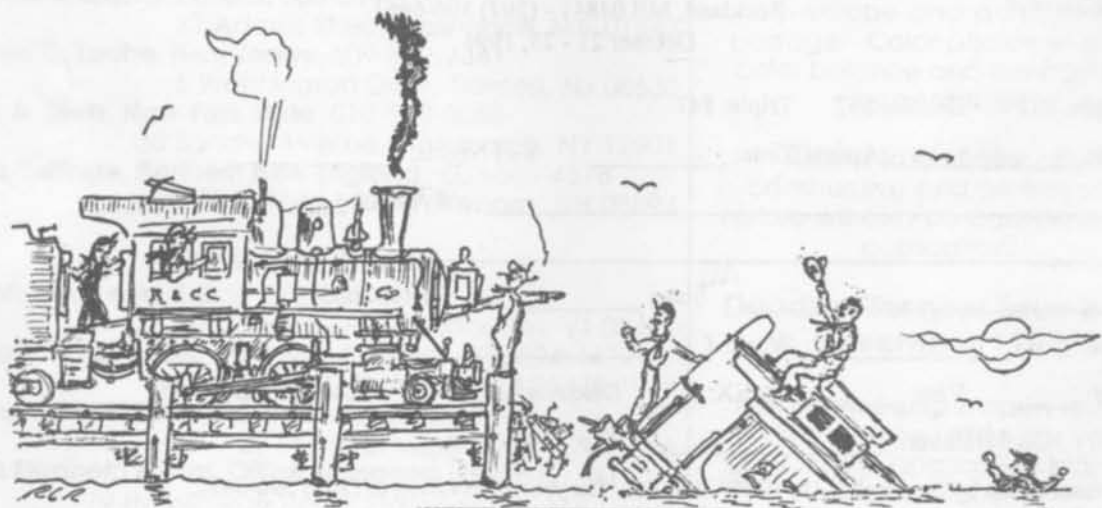
\$110.00 for life membership
 (only if you are an NMRA life member)

Please remit in U.S. FUNDS
 Make checks/postal orders payable to NER-NMRA

Mail to: R R Brown
 NER Office Manager
 79 Hemenway Road
 Framingham MA 01701

Office Use Only

| | | | |
|-----|-----|------|------|
| # | Xp | New | |
| Chk | Csh | File | Card |



NER Coupler #179, p. 8

